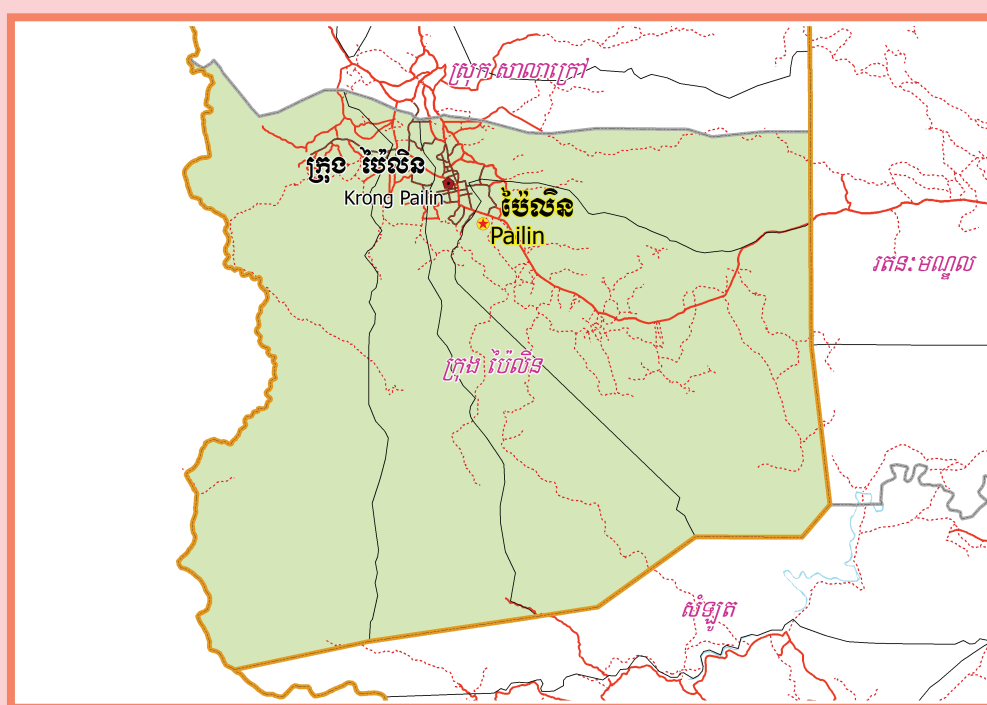


KINGDOM OF CAMBODIA
Nation Religion King



**National Committee for Sub-National
Democratic Development (NCDD)**



PAILIN Krong DATA BOOK 2009

Krong Code Nr: 2401
Pailin Province

October 2009

Pailin Krong Data Book 2009

District Code Nr: 2401

Pailin Province

Table of Contents

List of Abbreviations	i
Glossary.....	ii
Preface	vi
Introduction	vii
SECTION A: GEOGRAPHY	1
1 Administration and Infrastructure.....	3
2 Land Use and Natural Resources.....	5
3 Geography	7
3.1 Land Area	7
3.2 Distances between Offices	7
SECTION B: DISTRICT PROFILE	9
1 General Information	11
1.1 Population of the District.....	11
1.2 Occupations	12
1.3 Property	14
2 Infrastructure and Economy.....	16
2.1 Roads in meters over 3 years.....	16
2.2 Sewerage Pipes in meters over 3 years.....	16
2.3 Drainage and Bridges	16
2.4 Services in the District	16
2.5 Agriculture.....	17
3 Social Aspects	27
3.1 Education	27
3.2 Health.....	33
3.3 Water and Sanitation	35
3.4 Vulnerable groups.....	39
3.5 Migration	41
4 Natural Resources and Environment (NRE).....	43
4.1 Families involved with NRE issues over 3 years	43
4.2 Percentage of Families involved with Natural Resource issues, by Commune, for 2008	43
4.3 Percentage Houses with access to Garbage collection and Families affected by environmental Pollution, by Commune, for 2008	43
4.4 Percentage Families using chemical Fertilizer and chemical Pesticides, by Commune, for 2008 ..	43
5 Administration and Security	44

5.1	Birth Registration across 3 years.....	44
5.2	Number of unregistered Infants born in 2008, by Commune	44
5.3	Registered criminal Cases over 3 years	44
5.4	Registered criminal Cases per 10,000 people, by Commune, for 2008.....	44
5.5	Number of registered Land Disputes, by Commune, in 2008	44
6	Gender	45
6.1	Registered Domestic Violence over 3 years.....	45
6.2	Percentage of registered cases of Families experiencing domestic Violence, by Commune, in 2008	45
6.3	Women's involvement over 3 years.....	45
6.4	Percentage of Female Participants in Civil Society and of 18-60 year women with uncertain Jobs, by Commune, in 2008	46
6.5	Female-headed Households over 3 years.....	46
6.6	Percentage female-headed Households and with Children of less than 5 years old, by Commune, in 2008	46
7	Indigenous People in the District	47
7.1	Ethnic Minorities in the District over 3 years.....	47
7.2	Other Minorities in the District over 3 years.....	47
	SECTION C: PLANS AND PROJECTS	49
8	Priorities and Plans	51
8.1	Priorities of Commune Councils for 2009 in the District by Sector	51
8.2	Temporary Agreements by Commune, for 2009	54
8.3	Outputs, estimated and actual costs of C/S Fund Projects between 2005 and 2008, by Commune	67
8.4	Total Expenditure on C/S Fund Projects by sector and commune between 2005 and 2008.....	68
8.5	Actual 2009 C/S Fund projects by Commune	69
9	District level Projects from 2006 to 2009	70
9.1	District Initiative Infrastructure Projects from 2006 to 2009	70
9.2	District Initiative Service Projects from 2006 to 2009	71
9.3	Inter Commune Council Projects in 2008 and 2009	72
9.4	Other Projects in 2008 and 2009	72
	SECTION D: SERVICES AND ORGANIZATIONS	75
10	Infrastructure.....	77
10.1	Length of and Expenditure on Roads in 2008, by District	77
10.2	Scale of and Expenditure on Irrigation in 2008, by District.....	77
10.3	Power Supply in 2008, by District	78
11	Health Facilities.....	79

11.1 Health Facilities in the Province, by Operational District.....	79
11.2 Health Facilities and Staff in the province, by Operational District.....	79
11.3 Deliveries in 2007 in the Province, by Operational District.....	80
12 Education	80
12.1 Schools, Classes, Students, Staff, for for all levels, for 2007/2008 by District.....	80
12.2 Characteristics of Schools and School Principals for 2007/2008 by Commune	80
12.3 Enrolment by Level of Education, 2006/2007 by Commune	81
12.4 Enrolment by Level of Education, 2007/2008 by Commune	81
12.5 Aspects of Enrolment for 2007/2008 by Commune.....	81
12.6 School Buildings for all schools in the District for 2007/2008, by Commune	81
12.7 Conditions of Classrooms and Existence of Separate School Office and Library, by Commune	82
12.8 Community Participation and Financing across all schools in the District for 2007/2008 by Commune	82
12.9 Percentage Student Flow Rates and Graduation by level 2006/2007, by Commune	82
13 Staff and Resources at the District	83
13.1 District Councilors elected in 2009	83
13.2 Committees of the Council.....	83
13.3 Board of Governors.....	84
13.4 Offices under Sala Krong, Sala Srok and Sala Khan	84
13.5 Municipality/District/Khan line offices.....	84
13.6 Properties and Equipment of District Administration	85
13.7 Registered Revenue of the District Administration in 2008	86
13.8 Services in the District	86
13.9 Civil Society Organizations active in the District.....	87
13.10 Private Sector Organizations.....	90
SECTION E: POVERTY DATA	91
14 Data on Poverty	93
14.1 Predicted Poverty Rates for 2009, by commune	93
14.2 Poverty data from survey.....	93

List of Abbreviations

#	Number
AGR	Agriculture
BR	Birth Registration
C. Pilot	Piloted Commune
C/S	Commune / Sangkat
CBO	Community-Based Organization
CDB	Commune Database
CDPD	Commune Development and Planning Database
CIP	Commune Investment plan
CLTS	Community Led-Total Sanitation
Comm.	Commune
Com Cov	Commune Covered
CPA	Complementary Package of Activities
CPS	Community Preschool
CCWC	Commune Committees for Women and Children
DANIDA	Danish International Development Agency
DDLG	Democratic Development and Local Governance Project (EC-UNDP)
DFID	Department For International Development (UK)
DIP	District Initiative Project
DIS	District Information System
District PDRD	District Office of Rural Development
District WP	District Work Plan
DIW	District Integration Workshop
DoLA	Department of Local Administration
Dr	Doctor
DWRM	District Office of Water Resource and Meterology
ECD	Early Childhood education (part of PE)
EMIS	Education Management Information System
Event IC	Celebration of International Days
FDH	Former District Hospital
GTZ	German Society for Technical Cooperation (Gesellschaft für Technische Zusammenarbeit GmbH)
Ha	Hectare
HC	Health Center
HC (NB)	Health Center (no building)
HH	Headed Household
HSI	Intervention for Health
HP	Health Post
HW	Hand Washing
ICC	Inter Commune Council
IFAD	International Fund for Agricultural Development
IND	Industry
Inter-commune	Inter-Commune Project Management Committee or Inter-commune project
IO	International Organization
LASED	Land Allocation for Socio-Economic Development
LGCR	Local Governance for Children's Rights
M&E	Monitoring and Evaluation
MA	Medical Assistant
MoEYS	Ministry of Education, Youth and Sports
MoH	Ministry of Health

MoP	Ministry of Planning
MPA	Minimum Package of Activities
MW1	Primary Midwives
MW2	Secondary Midwives
n/a	Not available
NCD	National Contracts Database
NCDD	National Committee for Sub-National Democratic Development
NGO	Non-Governmental Organization
NRML	Natural Resources Management and Livelihood
NU1	Primary Nurse
NU2	Secondary Nurse
OD	Operational District
ODF	Open Defecation Free
Ope. Costs	Operational Costs
Others	Other Staff
PBW	Public Works
PDoEYS	Provincial Department of Education, Youth and Sport
PDRD	Provincial Department of Rural Development
PDWRM	Provincial Department of Water Resource and Meteorology
PE	Parenting Education
PHAST	Participatory Hygiene and Sanitation Transformation
PHD	Provincial Health Department
PID	Project Information Database
PMC	Project Management Committee
Pop 04-05	Population Covered 2004 or 2005
PSDD	Project to Support Democratic Development through Decentralization and Deconcentration
RRD	Rural Road Development
RH	Referral Hospital
RILGP	Rural Investment and Local Governance Project
RPRP	Rural Poverty Reduction Program
RuLIP	Rural Livelihoods Improvement Program
SIDA	Swedish International Development Cooperation Agency
SPPA	Senior Provincial Program Advisor
TBA	Traditional Birth Attendant
UNDP	United Nations Development Project
UNICEF	United Nations Children's Fund
Vil	Village
Vil Cov	Village Covered
VIL-HC	Distance from Village to Health Center
WASH	Water, Sanitation and Hygiene
WRM	Water Resource and Meteorology

Glossary

C/S Fund: The Commune/Sangkat Fund is established and managed by the Government of Cambodia to provide financial support for development projects and administrative costs of Commune/Sangkat Councils. The amount is determined as a percentage of the National Budget (for 2009: 2.8% over the 2008 budget) and is expected to increase gradually over the years. The total 2009 budget under this fund is \$ 27,643,902 (of which \$ 19,272,170 is for Development Projects and \$ 8,371,731 for Administration). Under the Rural Investment and Local Governance Project the World Bank currently reimburses the costs of development projects if these meet the Bank's criteria.

CDB: the Commune Data Base is a national database, compiled by the Ministry of Planning, on the basis of detailed questionnaires, completed at village and commune level, which are then sent to the Departments of Planning for data entry. The most recent round of data collection took place at the end of 2008 (and is reflected in the District Data Books). Commune, District and Provincial Profiles can be generated from this database and should be available from provincial Departments of Planning.

CDPD: the Commune Development and Planning Database is a database maintained by Departments of Planning and Ministry of Planning, recording proposed activities as determined and prioritized by Commune and Sangkat Councils; the Temporary Agreements between these councils and supporting agencies, as decided at District Integration Workshops and details on projects that actually take place at commune, district and provincial levels.

CIP: The Commune Investment Plan is a rolling three-year plan, developed and decided by the Commune or Sangkat Council. It sets priorities and identifies the projects proposed for the years to come.

Commune and Sangkat (C/S): the Communes (in rural areas) and Sangkats (in urban areas) are the lowest and smallest units of local government. Councils are elected directly, once in five years, for the 1417 Communes and 204 Sangkats. In the C/S there are 14,119 villages, which have Village Chiefs, but don't constitute a formal level of local government.

DIP: the District Initiative Project is jointly supported by the MDLF (Multi-Donor Livelihood Facility (supporting the NRM&L Program)) and PSDD. In 2009 it covers 106 districts, 60% of the total in the country, with a budget of \$ 3.2 million. It is focused on capacity development in planning, democratic development, public competitive procurement, financial management and service delivery.

DIS: The District Information System is a national database maintained by NCDD, recording resources, staff, revenue, infrastructure and equipment available in the 193 Districts and Khans throughout the country. The last update took place in July 2009.

District, Municipality and Khan constitutes the third level of Government in Cambodia. There are 159 rural Districts, 26 Municipalities and 8 Khans of Phnom Penh Capital. They all have Councils which were, for the first time, elected in May 2009, by the Commune/Sangkat Councilors. These councils have a mandate for 5 years.

DIW: District Integration Workshops are held between July and October, to bring Commune/Sangkat Councils, looking for support for their projects, together with the governmental and non-governmental agencies that may provide support.

ICC: Inter Communes Council projects are executed in 10 provinces under the Democratic and Decentralized Local Governance Project (DDLG). This five year project (2006-2010) is executed by Ministry of Interior and funded by the European Commission and UNDP. The project focuses on improving dialogue partnership and accountability; create a network of Commune Councils at the provincial and national level and support and contribute to local area development for poverty reduction. The work under the ICC component supports investments and services formulated through inter-commune dialogue and planning.

MEDICAM: A non-profit and non-partisan membership organization for NGOs active in Cambodia's health sector. It is the primary networking agency for health-related NGOs.

NCDD: the National Committee for sub-National Democratic Development is the inter-ministerial body charged with the implementation of the Organic Law (a key legislative document, adopted in 2008, outlining the envisaged decentralization). NCDD also channels substantial financial assistance by a number of Development Partners, to projects and programs at various levels. This amounted to over \$ 91 million in 2008. More information at: www.ncdd.gov.kh. This website also provides access to reports, manuals, legal documents, details on projects and more.

OD: the Operational Districts are the districts as defined and used by the Ministry of Health. These do not coincide with the 193 (Administrative) Districts and Khans, as used by all other RGC agencies. The Operational Districts are usually larger, and so there are 77 Operational Districts against 193 administrative Districts and Khans. However they do fit within the boundaries of administrative provinces.

PID: The Project Information Database is the database maintained by NCDD at national and sub national level, to follow all aspects of projects by Commune and Sangkat Councils, including the C/S Fund projects

Provincial Investment Fund (PIF)

The Provincial Investment Fund is allocated to all Provinces and Municipalities according to a population based formula. Part of the fund is earmarked for support to planning activities of the Provincial / Municipal Department of Planning; and to gender mainstreaming activities of the Provincial Department of Women's Affairs. The remaining "un-earmarked PIF" is allocated by PRDC to sectoral technical departments against established criteria and in response to proposals with prioritisation taking into account: priorities formulated by the CS Councils and aggregated by District into District Priority Activities Matrices (DPAM); alignment with national planning and poverty alleviation criteria, complementarity with other planned activities; and performance of the Department concerned in implementation of activities in previous years. With this provisional allocation, the Department then programs activities through the District Integration Process. Finally, the agreed activities, plus support costs amounting to no more than 25% of the total, are included in a sub-contract signed between PRDC and the Department, pursuant to the overall PSDD contract signed between NCDD and PRDC. Total budget has been around \$ 2 million per year.

Province: the 23 Provinces and Phnom Penh Capital City represent the 2nd layer of government. They vary in size, from very small, like Kep (approx. 36,000 people) and Pailin (approx. 70,000 people), or large but with small populations, like Mondulkiri (over 60,000 people), and Ratanakiri (over 153,000) to densely populated and large, like Kampong Cham (over 1.7 million people) and Kandal (approx. 1.4 Million people).

PSDD: the Project to Support Democratic Development through Decentralization and Deconcentration is funded by DFID (UK), SIDA (Sweden) and UNDP and runs from 2006 till the end of 2010 (including a one year extension). Annual budgets range from \$ 11 million to over \$ 18 million. The project provides core technical support to NCDD and to the provinces, financial support to the C/S Fund, District Initiative, Provincial Investment Fund and capacity building support through training, studies and advisory services.

RILGP: The Rural Investment and Local Governance Project is a World Bank funded project that provides substantial support to C/S Fund projects and to developing the required infrastructure, policies, systems and skills. It started in 2003 with a Loan for \$ 22 million for 2003-2007 and was then extended with a Grant of \$ 36 million for the period of 2007-2010. Discussions about a possible RILGP 2 are taking place between RGC and the World Bank.

RPRP: the Rural Poverty Reduction Project is a seven year project from 2004 till 2010, funded by IFAD and UNDP and implemented through the Ministry of Agriculture, Forestry and Fishery, supported by the Ministry of Interior and facilitated by NCDD. The project is active in the provinces Prey Veng and Svay Rieng and focuses on 120,600 households below poverty line. The objective is poverty reduction with the active participation of the poor through improved livelihoods, Strengthened capacity, Sustainable farming systems and natural resource management, new and/or rehabilitated infrastructure development, increase accessibly to technology, services and markets for their economic and social development.

RULIP: the Rural Livelihoods Improvement Project is implemented by the Ministry of Agriculture Forestry and Fisheries (MAFF)' Project Support Unit- PSU, with the NCDD playing the role of cooperating agency. Funded by IFAD and UNDP, the project will run till 2014. The target group consists of poor households who have little or even no land, few livestock or other assets and often many dependents. The main goal of the project is to directly or indirectly improve the livelihood systems, food security and incomes of a total of 33,900 rural poor, ethnic minority and female headed households in targeted village of Kratie, Preah Vihear and Ratanakiri provinces in a sustainable manner.

Seth Koma: The UNICEF funded Seth Koma program focuses on measurable action for children and women. During 2006 -2010 it is implemented in six provinces. Government and UNICEF pursue a set of inter-related goals, addressing critical stages of the life cycle of the child: a) Mothers have safe pregnancies and deliveries and healthy newborns; b) best possible start in life of infant; c) Children enter schools at the right age of six years; d) Children are protected from exploitation, abuse, violence, discrimination and other risks; and e) Youth and adolescents acquire life skills, express their views, participate in the decisions.

Preface

The Government of Cambodia attaches great importance to optimal use of scarce resources and to participatory planning and management at all levels. The Organic Law which was adopted in 2008 provides the legal context for further steps towards improving and decentralizing planning, management and monitoring, and towards greater accountability and transparency of institutions at sub-national levels.

The Government has established elected Councils at the sub-national levels, and we will progressively give them the responsibilities, together with the human and financial resources, to deliver a wide range of public services. They will be more democratic, more efficient, more transparent and accountable, better at addressing gender and other inequalities, and at fighting corruption. We recognize that development does not come from government alone; it needs the involvement of citizens, civil society and the private sector, and the new system will facilitate this.

A central element in this process is the availability of information on any aspect of development to all concerned parties. The newly elected Councillors at District and Khan level, line departments operating at these levels, but also NGOs, Development Partners, Commune Councillors and citizens throughout Cambodia need information on problems and requirements, resources and opportunities, services and agencies, plans and projects. They will need such information to better understand the present situation, set targets for the future, monitor progress, know what others are doing and to apply resources wisely and this is the reason the District Data books will be so valuable.

The District Data Books are a major step towards full transparency and towards informed planning and decision-making. They provide all available data at District, Khan, Commune and Sangkat level in easily accessible formats, in Khmer and English, through over 16,000 printed copies, CD-ROMs and the NCDD website.

This is the first time in Cambodia (and possibly in South East Asia) that such detailed information is made so widely available and NCDD should be commended for the hard work that has gone into this. We also thank the Ministry of Planning, which provided the detailed data of the Commune Data Base, the sectoral ministries and provincial authorities who contributed data and the Development Partners who provided financial support.

It is our sincere hope that the publication of the District Data Books will strengthen capacities, especially at district levels, for evidence-based development planning. We also hope that this information will deepen the understanding among Ministries, Provincial Authorities, Development Partners, NGOs and research agencies of the realities at commune and district levels.

We call upon all to use and distribute this information, complement or correct where appropriate and to contribute new data in the years to come.

Sar KHENG

Deputy Prime Minister, Minister of Interior and Chairman of NCDD

Introduction

Purpose

The purpose of the District Data Books is to bring together information on any aspect of life and development of Districts, Khans, Communes and Sangkat, together and make this widely available. The primary targets are the newly elected District Councilors, district level line departments, provincial agencies, Development Partners and NGOs operating at this level. They need detailed knowledge on current living conditions, natural resources, infrastructure, agriculture and other economic activities, current service levels, past and planned projects and available resources.

While much information exists on many of the above aspects, it is often hard to access that information and much is lost to reports, databases and statistics that are not widely shared. Data are often only available in one language and often out-of-date, and many reports cover only one sector or region.

We found that these problems are especially acute at the district level. Now that Districts are becoming a much more significant level of local government and development planning, there is an urgent need for wide-ranging data to be used for setting base-lines, planning and prioritizing, monitoring and learning.

Approach

We have attempted to identify and compile all available statistics, reports, maps and other data at district and/or commune level. From this we have selected information that is available for all or most districts, reasonably reliable and up-to-date, sufficiently detailed and of possible interest to development planners, decision makers, agencies and citizens.

The major sources of the information in these District Data Books are:

- a) The Commune Data Base information over the years 2006 to 2009 (the most recent data were collected late last 2008), as compiled by the Ministry of Planning
- b) Detailed information directly collected from the Ministry of Health, the Ministry of Education, Youth and Sports and (for maps) the Ministry of Land Management, Urban Planning and Construction
- c) The Project Information Database (PID) at NCDD (up-to-date)
- d) The Commune Development and Planning Database (CDPD) (up to date)
- e) The District Information System (DIS) (updated per Mid 2009)
- f) Direct data collection at provincial and district level on private sector, irrigation, roads, and electricity, through provincial agencies
- g) Medical data collected from MEDiCAM
- h) The ID Poor Project – for poverty data on a number of provinces and districts
- i) NCDD's work on predictive poverty rates
- j) Specific projects for outputs, plans and budgets (Seth Koma, RILGP, RPRP and ICC)

Limitations of the data

We are fully aware that the data we collected are not always complete, consistent or correct. While we have rejected information that was wrong or very incomplete, we decided not to aim for statistical and scientific perfection, but to include information that is useful, relevant

and comprehensive. We also accepted different sources for the same data as this may encourage discussion on the quality of the respective data.

We strongly encourage anyone who notes errors or incompleteness in these data to contact us and to share their data. We hope that the next round of producing such District Data Books can draw on wider sources and more complete data.

We encourage the District Administrations, who receive these data also in digital format, not only to use these for their planning and monitoring, but also to start correcting and updating these data and to share new data with NCDD for future use.

Contents

The information in the following pages is organized in five sections:

- a) **Geographical data:** this section provides maps on infrastructure and administration and on land use and natural resources management. These maps are also provided in large format to all Districts and Khans.
- b) **District Profile:** this presents wide ranging data, covering 2006 – 2009, at district and commune level, extracted from the Commune Data Base, but edited for better understanding.
- c) **Plans and Projects:** this section presents development priorities determined by Commune and Sangkat Councils, Temporary Agreements, outputs and expenditure of major projects at Commune and District level over 2006 – 2008 and plans and budgets for 2009.
- d) **Services and Organizations:** this section provides details on key infrastructure (roads, electricity, irrigation systems) and services in health and education at district and commune level. It also provides an inventory of resources at the District Administration, NGOs operating in the district and private sector agencies active in the district.
- e) **Poverty Data:** this section provides predicted poverty rates for 2009 for all districts and communes and detailed poverty data compiled and processed by the ID Poor project for those that have been covered by this project.

The future

It is our hope that this is the start of a longer-term process. We hope that a next edition of these District Data Books will offer more comprehensive, correct and up-to-date information. We hope that the District Administrations will not only start using this information, but also improve and update it. For this they are all provided with the full data set in digital format.

We invite agencies, projects and experts to send reports, statistics and maps that could be used for a next version to us and we invite all users of the District Data Books to inform us about errors, updates and inconsistencies. Please contact us through info@ncdd.gov.kh

We now invite you to browse through this data book. You may open this randomly or use the table of contents and go to the aspects that have your special interest.

We hope that you will be informed, surprised and assisted. We hope, above all, that this information will lead to a deeper understanding of causes and effects of poverty, to purposeful decisions on how to tackle those causes and to greater transparency in using scarce resources for the benefit of all.

Martin de Graaf
Program Advisor, PSDD/NCD

SECTION A: GEOGRAPHY

1 Administration and Infrastructure

Please see separate folder containing A3 maps.

2 Land Use and Natural Resources

Please see separate folder containing A3 maps

3 Geography

3.1 Land Area

Total Land Area (ha)	Forest Land Area (ha)		Cultivation Land Area (ha)	Construction Land Area (ha)	Other Land Area (ha)
	Total	Flooded Forest Area			
54000	31110	0	12380	10510	0

3.2 Distances between Offices

Location	Distance (Km)
From District Office to C/S Office of Sangkat Pailin	1.1
From District Office to C/S Office of Sangkat Ou Ta Vau	4.4
From District Office to C/S Office of Sangkat Tuol Lvea	3.2
From District Office to C/S Office of Sangkat Bar Yakha	5.3

SECTION B: DISTRICT PROFILE¹

¹ All data in this section come from the Commune Database (CDB) unless otherwise specified. These include primarily new CDB data, collected late 2008, and some data from earlier years. Please note that percentages are rounded to the nearest whole number.

1 General Information

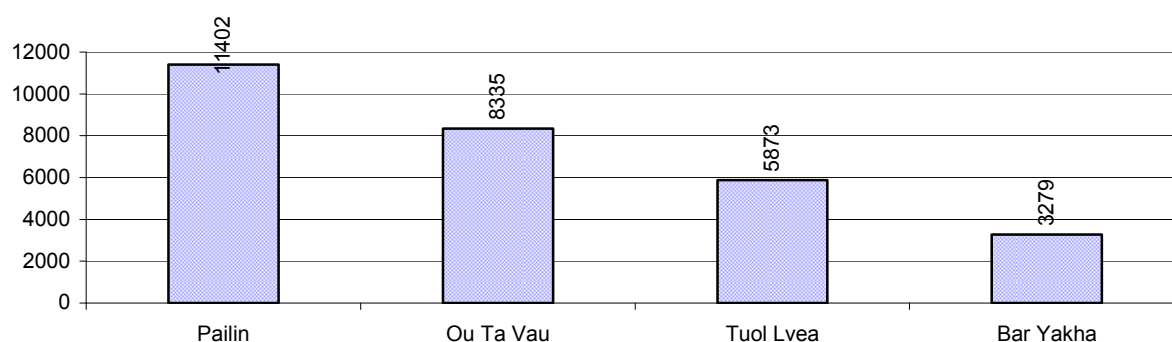
1.1 Population of the District

1.1.1 Total Population

Number of families	2005	2006	2007	2008
Total number of families	5,811 families	5,958 families	6,292 families	6,241 families
Increase (+)/Decrease (-) in nr of families		3%	6%	-1%
Total population	26,175 pers	28,342 pers	28,899 pers	28,889 pers
Increase (+)/Decrease (-) in nr of people		8%	2%	0%
Number of female Headed Households (HH)	382 families	441 families	594 families	597 families

Note: Percentages of population and increase/decrease are calculated on basis of the previous year. A negative sign in front of the percentage indicates a decrease in population.

1.1.2 Population, by Commune, in 2008



1.1.3 Population, by Age Group, over 3 years

Population by age group	2006	2007	2008	
	%	%	%	Number
Age 0-5 years (as percentage of the population)	12%	13%	13%	3,833 persons
Male 0-5 yrs	50%	49%	50%	1,905 persons
Female 0-5 yrs	50%	51%	50%	1,928 persons
Age 6-17 (as percentage of the population)	32%	32%	31%	9,094 persons
Male 6-17 yrs	52%	51%	52%	4,721 persons
Female 6-17 yrs	48%	49%	48%	4,373 persons
Age 18-60 (as percentage of the population)	52%	53%	53%	15,215 persons
Male 18-60 yrs	51%	51%	50%	7,570 persons
Female 18-60 yrs	49%	49%	50%	7,645 persons
Age 61 above (as percentage of the population)	3%	3%	3%	747 persons
Male 61	53%	52%	54%	407 persons
Female 61	47%	48%	46%	340 persons

Note: The overall percentage for each age group is calculated on the basis of the total population. The gender distribution of each group is calculated on the basis of the population within that particular age group.

1.2 Occupations

1.2.1 Percentage of families with a particular Occupation over 3 years

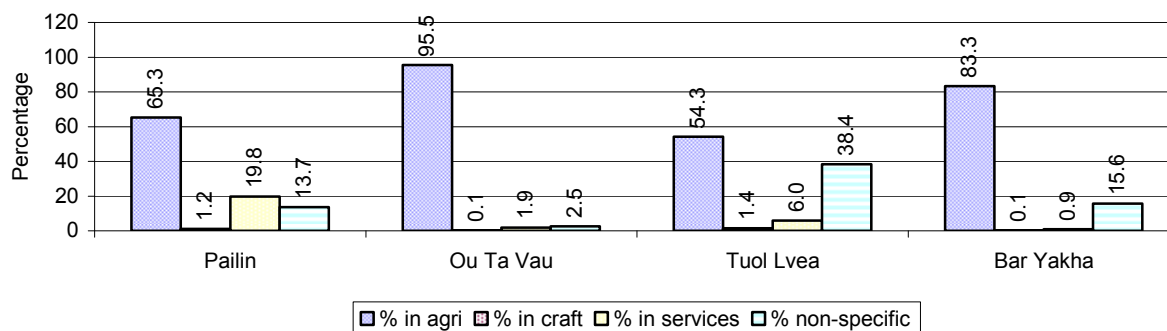
This table shows the percentage of the population who have a particular occupation (job), for example the percentage of the population in the district who are rice farmers, furniture crafter, trader, etc.

Description	2006	2007	2008	
	%	%	%	Number
Families whose main occupation is agriculture	75%	81%	74%	4,624 Families
Families whose primary occupation is rice farming	0%	0%	2%	115 Families
Families whose primary occupation is cultivating long-term crops	1%	2%	1%	62 Families
Families whose primary occupation is cultivating short-term crops	74%	78%	68%	4,275 Families
Families whose primary occupation is cultivating vegetable	0%	0%	1%	43 Families
Families whose primary occupation is fisherman	0%	0%	0%	0 Families
Families whose primary occupation is livestock farmer	0%	0%	2%	124 Families
Families whose primary occupation is NTFP collection	0%	0%	0%	5 Families
Families whose main occupation is craft work	1%	1%	1%	49 Families
Families, whose main occupation is in furniture craft, wooden, rattan, vine, bamboo	0%	0%	0%	26 Families
Families whose main occupation is in metal, aluminum, glass goods production	0%	0%	0%	10 Families
Families whose main occupation is food production	0%	0%	0%	4 Families
Families whose main occupation is tire, plastics and rubber goods production	0%	0%	0%	0 Families
Families whose main occupation is textile, clothing goods production	0%	0%	0%	1 Families
Families whose main occupation is in other production, not listed above	0%	0%	0%	8 Families
Families whose main occupation is services	8%	6%	10%	607 Families
Families whose main occupation is trade	5%	4%	6%	385 Families
Families whose main occupation is repair	1%	0%	1%	89 Families
Families whose main occupation is providing transport services	2%	1%	1%	81 Families
Families whose main occupation is providing other services	1%	1%	1%	52 Families
Families whose main occupation is not clear (or multi)	16%	13%	15%	961 Families

Note: The occupation percentages are calculated on the basis of the total number of families.

1.2.2 Percentage Families that work in one of four occupational sectors, by Commune in 2008

This table indicates the percentage of families involved in one of four occupation types: agriculture, craft, services or non-specific (other). Please note agriculture includes forestry activities such as cutting down trees and gathering gum from the trees.



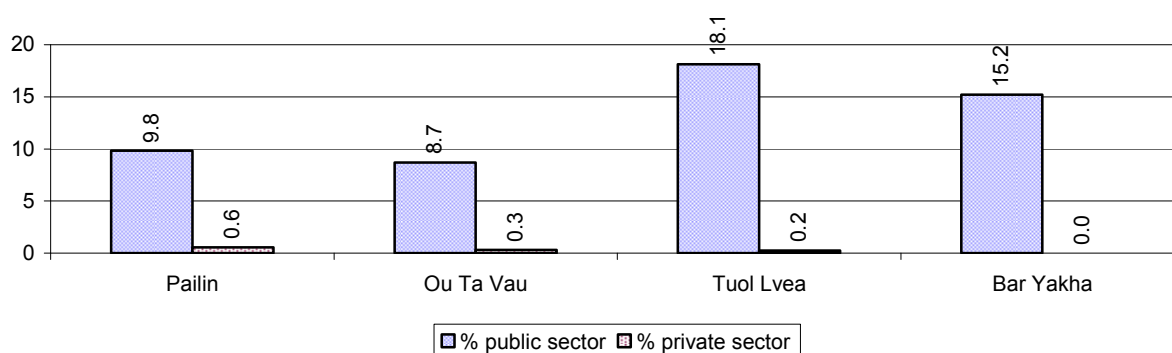
Note: Calculated on the basis of the total number of families within a commune.

1.2.3 Percentage of Families with public Sector, private Sector or uncertain Jobs, over 3 years

Description	2006	2007	2008	
	%	%	%	Number
Families that have a family member who is a government official, staff or worker	17%	13%	12%	730 families
Families that have a family member who is a private sector staff or worker	1%	1%	0%	23 families
Number of people aged 18-60 with uncertain/irregular jobs	4%	2%	7%	1,063 persons

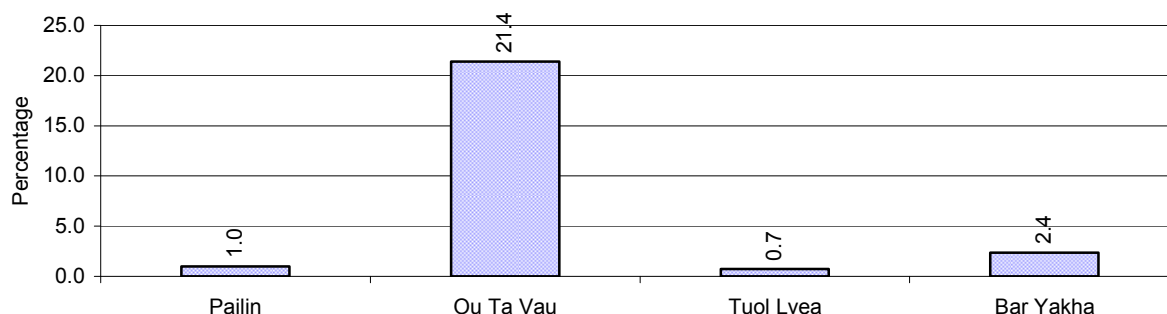
Note: In the first two rows percentages are calculated on the basis of the total number of families. In the third row the percentage is calculated on the basis of the total number of people aged 18-60 years.

1.2.4 Percentage of Families with public or private Sector Jobs, by Commune in 2008



Note: Calculated on the basis of the total number of families in the commune

1.2.5 Percentage of People aged 18-60 years with uncertain/irregular Jobs, by Commune, in 2008.



1.3 Property

1.3.1 Housing types and facilities over 3 years

This table shows the percentage of people living in a certain type of house. It also indicates how many houses have electricity or battery powered lights and how many have TV.

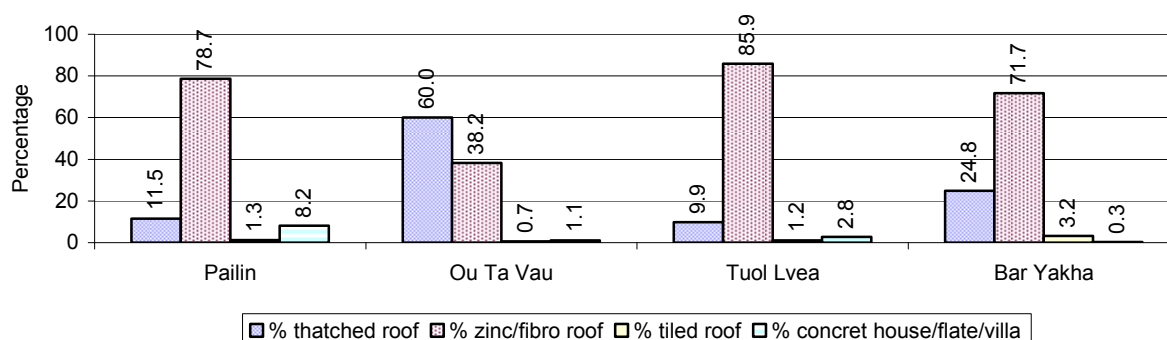
House Type	2006	2007	2008	
	%	%	%	Number
House with thatched roof	35 %	34 %	27 %	1,656 houses
House with zinc/fibro roof	62 %	62 %	67 %	4,076 houses
House with tiled roof	0 %	1 %	1 %	76 houses
Flats/apartments (with many families living)	1 %	1 %	2 %	109 houses
Concrete house or flat (with one family living)	2 %	2 %	2 %	144 houses
Villa house	0 %	0 %	0 %	11 houses
Houses with electricity	46 %	47 %	54 %	3,292 houses
Houses with battery light	18 %	25 %	21 %	1,272 houses
Houses with TV	45 %	49 %	54 %	3,250 houses

Note: Calculated against the total number of houses

1.3.2 Families living on public Land or without a permanent House

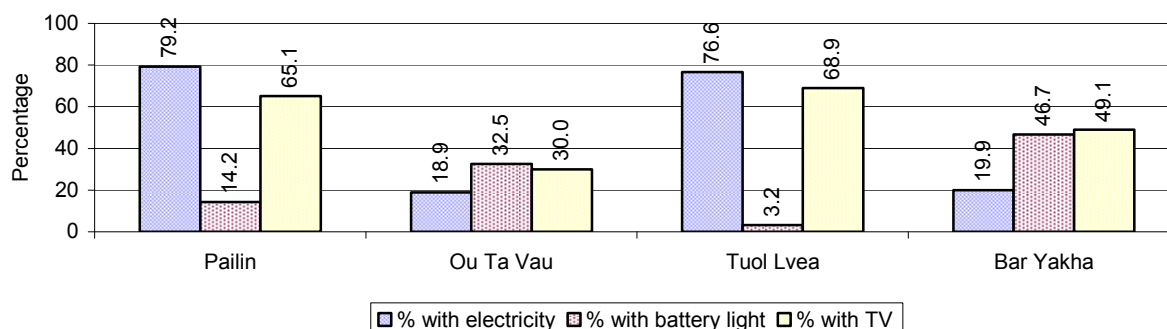
Living situation	2006	2007	2008
Families living in a house on public land	64 families	67 families	75 families
People, without permanent housing	22 person(s)	69 person(s)	14 person(s)

1.3.3 Percentage of Population living in a particular type of House, by Commune, in 2008



Note: Calculated against the total number of houses in each commune

1.3.4 Percentage of Houses with Electricity, Battery Lights and/or TVs, by Commune, in 2008



Note: Calculated against the total number of houses in each commune

1.3.5 Types of Vehicles and their ratio to Families across 3 years

This table shows the number of families per vehicle in the district. The last column shows the total number of each type of vehicle in the district for 2008.

Description	2006 ratio	2007 ratio	2008	
			Ratio	Number
Bicycle and bicycle with trailer	10	11	14	436
Ox-carts and horse-carts	127	121	139	45
Motorbike/with trailer	2	2	1	4,334
Motor tri-cycle	N/A	N/A	6,241	1
Large Transportation				
Total number of cars/trucks	16	16	11	587
Locally made vehicles	106	110	82	76
Trucks for goods transport	55	56	42	150
Buses/mini buses for passengers	259	274	328	19
Family cars	33	32	18	342
Agriculture machinery				
Tractors used for plowing	83	68	42	148
Power-tillage used for plowing	153	166	109	57
Other type of machinery				
Other type of machinery	1,490	1,573	480	13
Water transportation				
Row boats	N/A	N/A	N/A	0
Total number of motor boats	N/A	N/A	N/A	0
Motor boats used for fishing	N/A	N/A	N/A	0
Motor boats used for passengers	N/A	N/A	N/A	0
Motor boats used for goods transporting	N/A	N/A	N/A	0

Note: Ratio of families to a particular type of vehicle is the result of the total number of families divided by total number of that type of vehicle. Other types of vehicles, such as bulldozer, excavator, rollers etc. are not listed.

2 Infrastructure and Economy

2.1 Roads in meters over 3 years

Description	2006	2007	2008
Bituminous road	2,710 m	2,710 m	0 m
DBST, Macadam road	5,700 m	0 m	5,139 m
Concrete road	0 m	0 m	200 m
Laterite road	59,894 m	81,865 m	20,214 m
Constructed earth road	16,900 m	13,689 m	1,400 m
Un-constructed earth road	78,666 m	85,300 m	21,705 m

2.2 Sewerage Pipes in meters over 3 years

Description	Sewage pipe length		
	2006	2007	2008
Total length of sewage pipe, diameter 30-50 cm	0 m	0 m	0 m
Length of newly constructed sewage pipe, diameter 30-50 cm	0 m	0 m	0 m
Length of sewage pipe, diameter 30-50 cm needs repair/rehabilitation	0 m	0 m	0 m
Total length of sewage pipe, diameter of pipe 60-100 cm	120 m	0 m	305 m
Length of newly constructed sewage pipe, diameter 60-100 cm	0 m	0 m	7 m
Length of sewage pipe, diameter 60-100 cm needs repair/rehabilitation	0 m	0 m	7 m
Sewage pipe, diameter of pipe over 100 cm	4 m	0 m	33 m
Length of newly constructed sewage pipe, diameter over 100 cm	0 m	0 m	6 m
Length of sewage pipe, diameter over 100 cm needs repair/rehabilitation	0 m	0 m	0 m

2.3 Drainage and Bridges

Construction Type	2006		2007		2008	
	place(s)	Length	place(s)	Length	place(s)	Length
Single pipe culvert	58	306m	58	287 m	22	108 m
Double-pipe culvert	5	54m	13	71 m	4	48 m
Box pipe culvert	2	16m	1	5m	1	5 m
Wooden bridge	0	0m	0	0m	0	0 m
Concrete bridge	0	0m	2	0m	0	0 m
Bale bridge	2	68m	2	68m	0	0 m
Spillway construction	0	0m	0	0m	0	0 m

2.4 Services in the District

Descriptions	Number of places by year		
	2006	2007	2008
Public			
Electricity generating stations	0	0	5
Health clinics	5	5	16
Private			
Bicycle and motorcycle repair places	584	45	60
Agricultural machinery, tools and equipment repair places	12	11	13
Electronic tool repair places	5	8	22
Battery-charging services	8	12	12
Handicraft places, wooden furniture and forest by-products	21	20	29
Other handicraft places (excluding furniture)	2	2	3
Small-scale services (hairstylist, phone service, massage,	72	76	40

Descriptions	Number of places by year		
	2006	2007	2008
Karaoke, etc)			
Small-scale food shop businesses (Food, groceries, drink shop, etc)	25	63	193
Small-scale rice mills	9	3	6
Medium or large-scale rice mills	0	0	0
Small-scale markets	0	1	1
Large-scale market	1	1	2
Alcohol refinery places	14	19	30
Pharmacies and small drug stores	18	19	17
Hotels	1	1	1
Guest houses	4	5	12
Restaurants	6	7	8
Gasoline stations	7	3	5

2.5 Agriculture

2.5.1 Rice cultivation in the District over 3 years

Description	2006	2007	2008
Total dry rice land area	0 ha	0 ha	0 ha
Actual dry rice cultivation area	0 ha	0 ha	0 ha
% actual cultivation to total land	-%	-%	-%
Total dry rice production	- tonne(s)	- tonne(s)	- tonne(s)
Average dry rice yield	- tonne(s)/ha	- tonne(s)/ha	- tonne(s)/ha
Total wet rice land area	0 ha	0 ha	0 ha
Actual wet rice cultivation area	0 ha	0 ha	0 ha
% actual cultivation to total land	- %	-%	-%
Total wet rice production	- tonne(s)	- tonne(s)	- tonne(s)
Average wet rice yield	- tonne(s)/ha	- tonne(s)/ha	- tonne(s)/ha
Total intensive rice land area	0 ha	0 ha	0 ha
Actual intensive rice cultivation area	- ha	- ha	- ha
Average intensive rice yield	- tonne(s)/ha	- tonne(s)/ha	- tonne(s)/ha
Actual upland rice cultivation area	0 ha	0 ha	0 ha
Total upland rice production	- tonne(s)	- tonne(s)	- tonne(s)
Average upland rice yield	- tonne(s)/ha	- tonne(s)/ha	- tonne(s)/ha

2.5.2 Estimated wet and dry Season Rice Yield in tonne(s)/Ha, by Commune, in 2008

There is no estimated wet and dry season rice yield for in this District in 2008

2.5.3 Cultivated wet and dry Season Rice areas in Ha, by Commune, in 2008

There were no wet and dry season rice areas cultivated in this District in 2008

2.5.4 Estimated intensive Rice Yields in tonnes/Ha, by Commune, for 2008

There were no estimated intensive rice yields in this District in 2008

2.5.5 Estimated upland Rice Yield in tonnes/Ha, by Commune, for 2008

There were no estimated upland rice yields in this District in 2008

2.5.6 Wet season Rice irrigation across 3 years

Description		2006 %	2007 %	2008	
				%	Number
Total area of wet season rain fed rice land		- %	- %	- %	0 ha
Percentage of wet season rice land that is irrigated; and for 2008 area in Ha		- %	- %	- %	0 ha
Where	Area irrigated from canal/dam	- %	- %	- %	0 ha
	Area irrigated from river, stream, lake, natural pond	- %	- %	- %	0 ha
	Area irrigated from drilled well	- %	- %	- %	0 ha
	Area irrigated from dug pond	- %	- %	- %	0 ha

2.5.7 Water sources for wet Season Rice Cultivation, by Commune, in 2008

This chart shows the percentage of wet season rice cultivation receiving water from rain (natural) and from irrigation.

There were no wet rice season in this district in 2008

2.5.8 Access to Irrigation

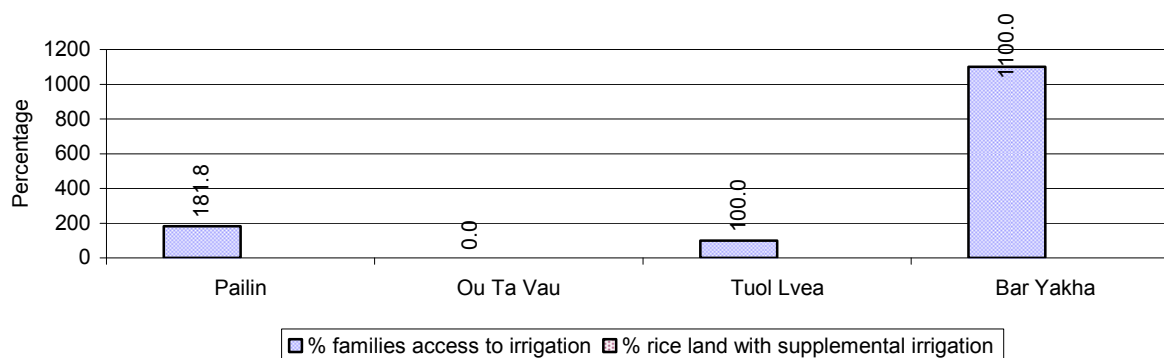
Description	2006 %	2007 %	2008	
			%	Number
Families who have access to irrigation water	550%	147%	40%	46 families
Families who have irrigation wells	0%	0%	0%	0 families

Note: Calculated against the total number of families are rice farmers

2.5.9 Number of Irrigation Wells over 3 years

Description	2006	2007	2008
Number of irrigation wells	0 wells	0 wells	0 wells

2.5.10 Percentage of Families with access to (supplemental) Irrigation for wet Season Rice cultivation, by Commune, in 2008



Note: % of families, with access to irrigation is calculated against the total number of families, whose main occupation is rice farming. Irrigated wet rice land area is calculated against the total actual wet rice land cultivated areas

2.5.11 Irrigation Wells, by Commune, in 2008

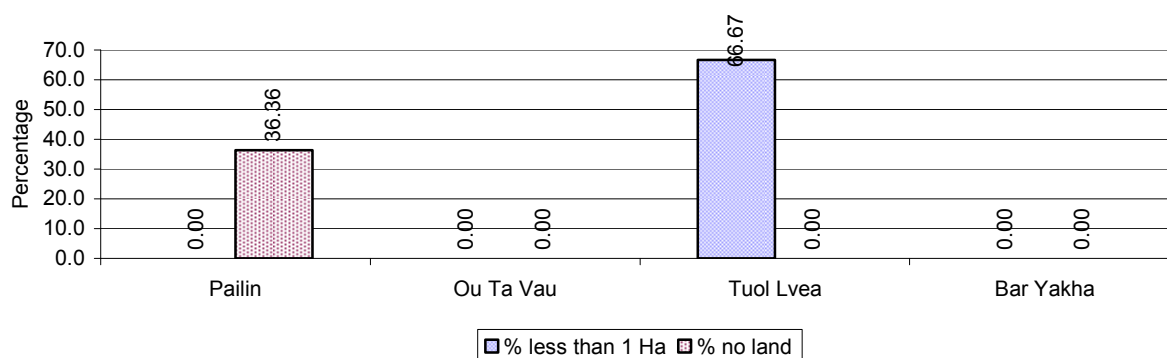
There are no irrigations wells in this District in 2008

2.5.12 Farmers owning less than one hectare of Rice Land

Description	2006 %	2007 %	2008	
			%	Number
Families who have less than one hectare of rice land	0%	0%	9%	10 families
Families who do not own any rice land	0%	0%	3%	4 families

Note: Calculated on basis of total number of families who are rice farming

2.5.13 Percentage of Farmers with less than one Hectare or no Rice Land, by Commune, in 2008

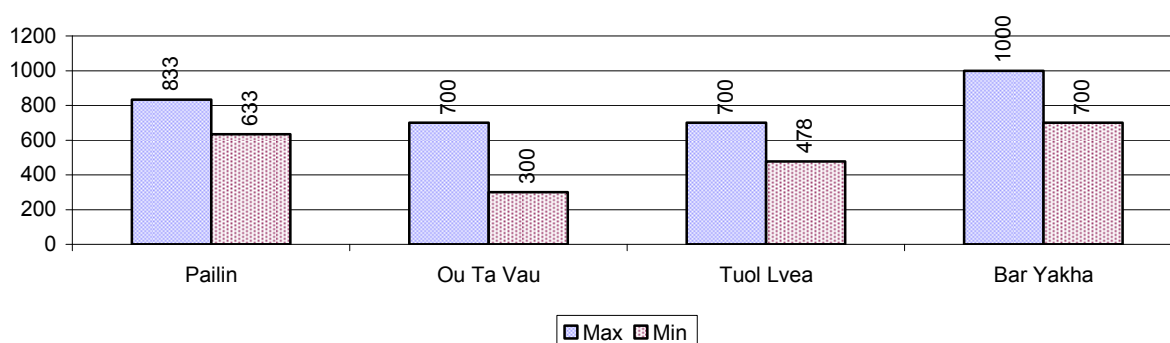


Note: Calculated on basis of total number of families who are rice farming

2.5.14 Average farm-gate Prices of Rice, over 3 years

Description	2006	2007	2008
Maximum average farm gate price	- Riels/Kg	583 Riels/Kg	808 Riels/Kg
Minimum average farm gate price	- Riels/Kg	500 Riels/Kg	528 Riels/Kg
Average farm gate price	- Riels/Kg	542 Riels/Kg	668 Riels/Kg
Average rice production per person	0 Kg/person	0 Kg/person	0 Kg/person

2.5.15 Minimum and maximum farm-gate Prices of Rice in Riel/kg, by Commune, in 2008



2.5.16 Production of Paddy in Kgs/Person, by Commune, in 2008

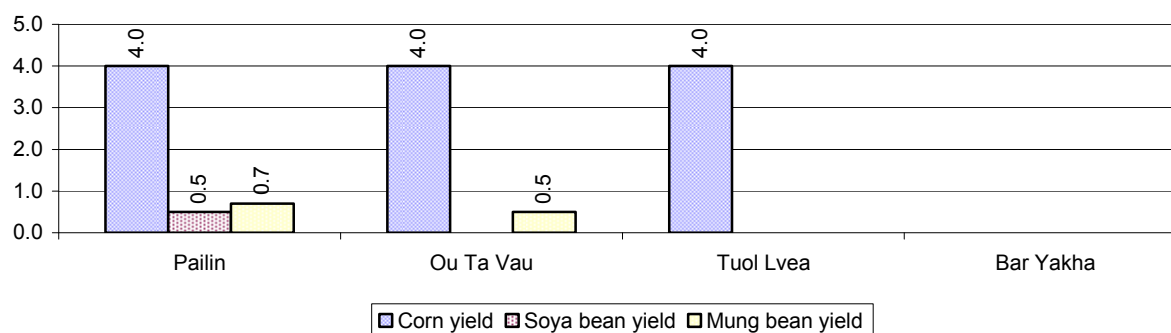
This table shows how much paddy (harvested rice) is produced in a year in a commune, in kgs per person.

There was no paddy produced in this District in 2008

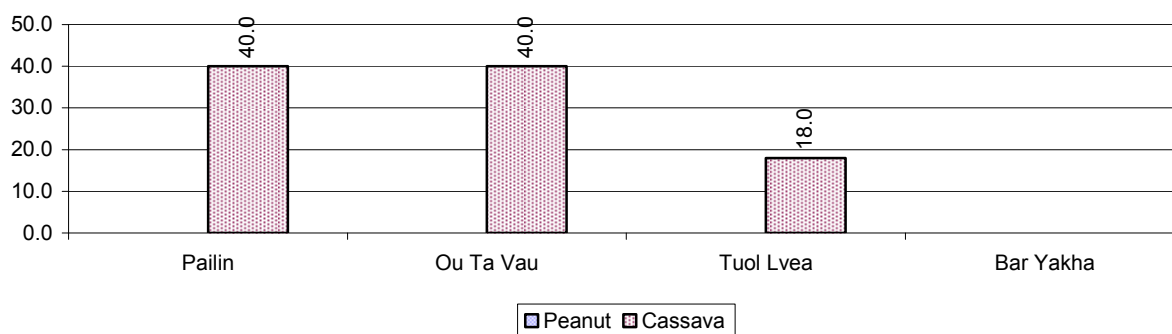
2.5.17 Production of other Crops, over 3 years

Crops	2006	2007	2008
Corn cultivation area	8,434 ha	9,730 ha	7,343 ha
Estimated corn yield	4.7 tonne(s)/ha	4.8 tonne(s)/ha	4.0 tonne(s)/ha
Estimated corn production	39,359 tonne(s)	46,218 tonne(s)	29,372 tonne(s)
Soya bean cultivation area	900 ha	445 ha	2 ha
Estimated Soya bean yield	1.1 tonne(s)/ha	2.5 tonne(s)/ha	0.5 tonne(s)/ha
Estimated Soya bean production	960 tonne(s)	1,113 tonne(s)	1 tonne(s)
Mungbean cultivation area	1,021 ha	1,170 ha	146 ha
Estimated Mungbean yield	0.7 tonne(s)/ha	3.0 tonne(s)/ha	0.6 tonne(s)/ha
Estimated Mungbean production	715 tonne(s)	3,510 tonne(s)	88 tonne(s)
Peanut cultivation area	78 ha	0 ha	0 ha
Estimated Peanut yield	0.7 tonne(s)/ha	- tonne(s)/ha	- tonne(s)/ha
Estimated Peanut production	55 tonne(s)	- tonne(s)	- tonne(s)
Cassava cultivation area	369 ha	1,074 ha	1,262 ha
Estimated Cassava yield	30.0 tonne(s)/ha	16.9 tonne(s)/ha	32.7 tonne(s)/ha
Estimated Cassava production	11,070 tonne(s)	18,124 tonne(s)	41,225 tonne(s)
Sweet potatoes cultivation area	0 ha	0 ha	0 ha
Estimated Sweet potatoes yield	- tonne(s)/ha	- tonne(s)/ha	- tonne(s)/ha
Estimated Sweet potatoes production	- tonne(s)	- tonne(s)	- tonne(s)
Sesame cultivation area	3,625 ha	2,261 ha	331 ha
Estimated Sesame yield	0.9 tonne(s)/ha	2.0 tonne(s)/ha	0.7 tonne(s)/ha
Estimated Sesame production	3,142 tonne(s)	4,409 tonne(s)	215 tonne(s)

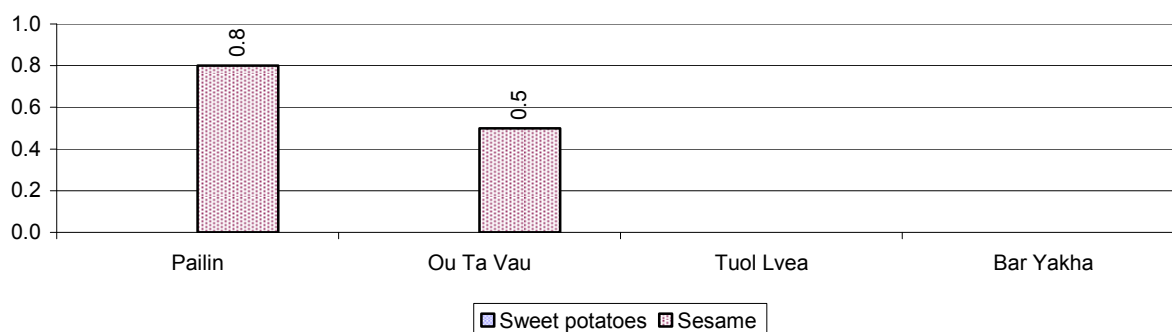
2.5.18 Yields of Corn, Soya beans and Mungbeans in tonne(s)/ha, by Commune, in 2008



2.5.19 Yields of Peanuts and Cassava in tonne(s)/ha by Commune, in 2008



2.5.20 Yields of Sweet Potatoes and Sesame in tonne(s)/ha, by Commune, in 2008



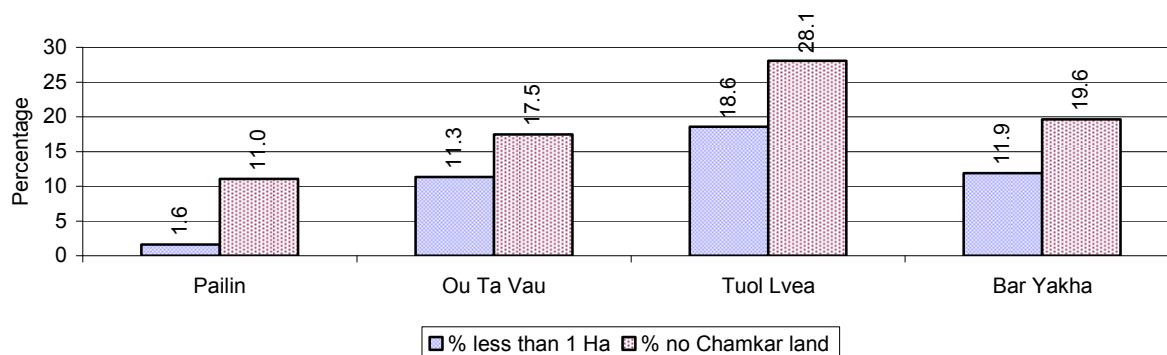
2.5.21 Percentage Farmers who own less than 1 Ha or no Chamkar land

Description	2006	2007	2008	
	%	%	%	Number
Families, who own less than 1ha of Chamkar land	9%	8%	9%	390 families
Families, with no Chamkar land	14%	15%	17%	742 families

Note 1: Calculated as a percentage of the total number of families whose main occupation is Chamkar (not rice) farming

Note 2: Chamkar land is no-rice land, i.e. other crops

2.5.22 Percentage Farmers owning less than 1 ha or no Chamkar land, by Commune, in 2008



Note: Percentage is calculated among families, who Chamkar farm as a main occupation, not the total population of the commune.

2.5.23 Percentage of Families raising Cattle/Buffalo, over 3 years

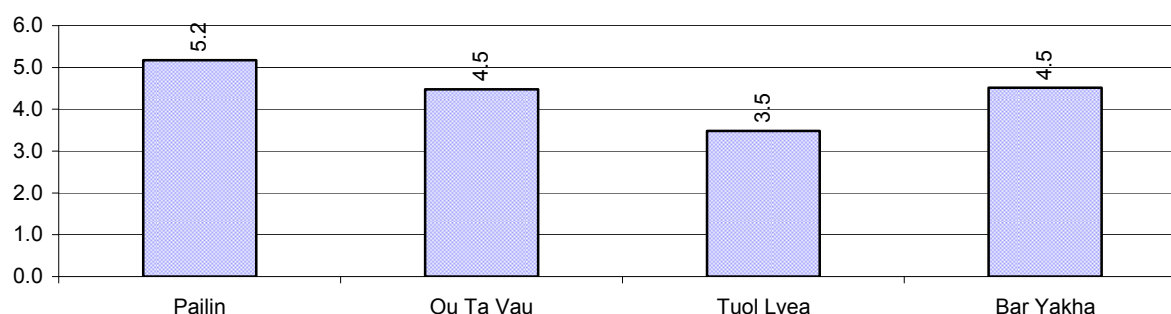
Description	2006 %	2007 %	2008	
			%	Number
Families raising cattle/buffalo	14%	16%	11%	672 families
Families raising cattle/buffalo as labor forces	1%	1%	1%	69 families

Note: Calculated against the total number of families.

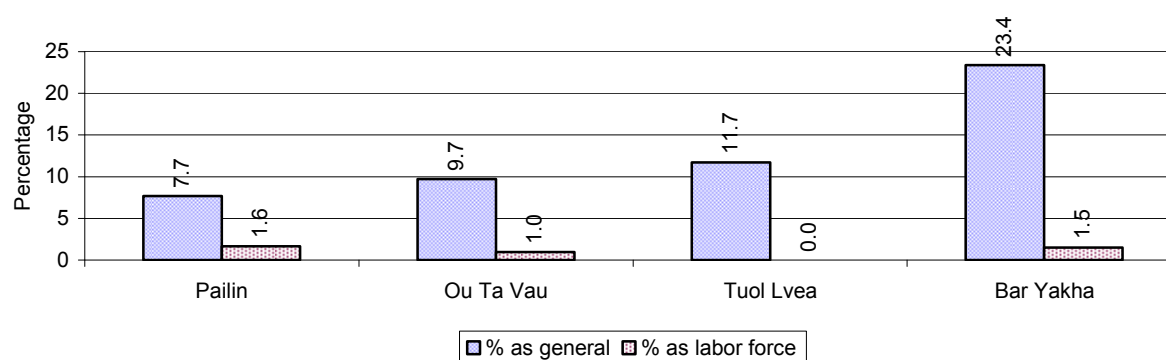
2.5.24 Number of Cattle/buffalo being raised, over 3 years

Description	2006	2007	2008
Total number of cattle/buffalo	3,399 head(s)	3,626 head(s)	3,005 head(s)
Average cattle/buffalo per families	4.1 head(s)/families	3.6 head(s)/families	4 head(s)/families

Note: Calculated by dividing total number of cattle/buffalo by total number of cattle/buffalo raising families

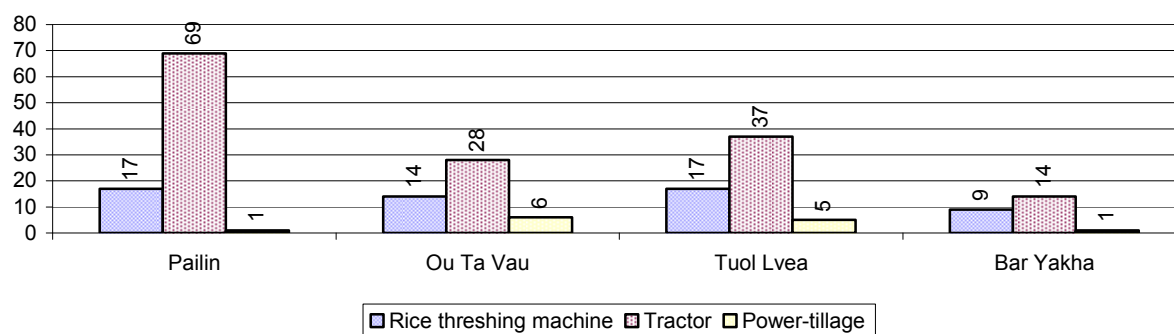
2.5.25 Average number of Cattle/Buffalo per Family, by Commune, in 2008

Note: Calculated by dividing total number of cattle/buffalo by total number of cattle/buffalo raising families

2.5.26 Percentage Families raising Cattle/Buffalo, for general and labor purposes in 2008, by Commune

Note: Calculated using the total number of families raising cattle/buffalo against the total number of families.

2.5.27 Type and number of agricultural Machines, by Commune, in 2008

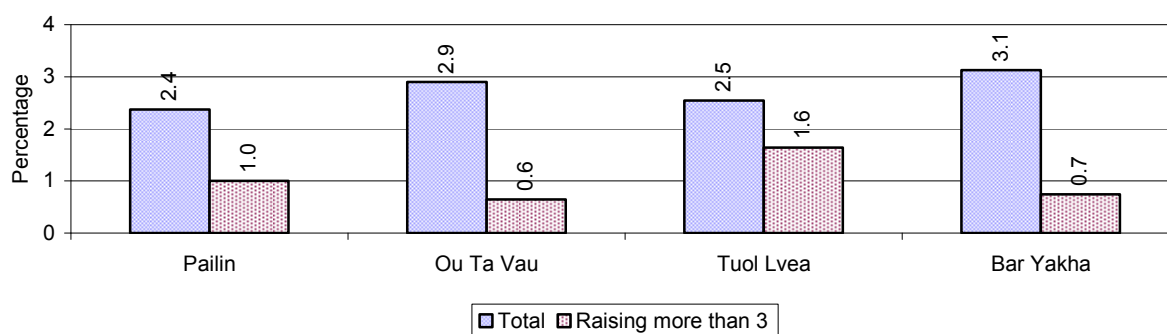


2.5.28 Livestock-producing Households over 3 years

Description	2006	2007	2008	
	%	%	%	Number
Total number of families raising pigs	6%	3%	3%	165 families
number of families raising more than 3 pigs	2%	2%	1%	62 families
Total number of families raising chickens	55%	70%	65%	4,054 families
number of families raising more than 3 chickens	41%	47%	51%	3,198 families
Total number of families raising ducks	5%	4%	3%	187 families
number of families raising more than 5 ducks	3%	3%	2%	98 families
Total number of families raising goats or sheep	0%	0%	0%	11 families
Total number of families raising horses	0%	0%	0%	0 families

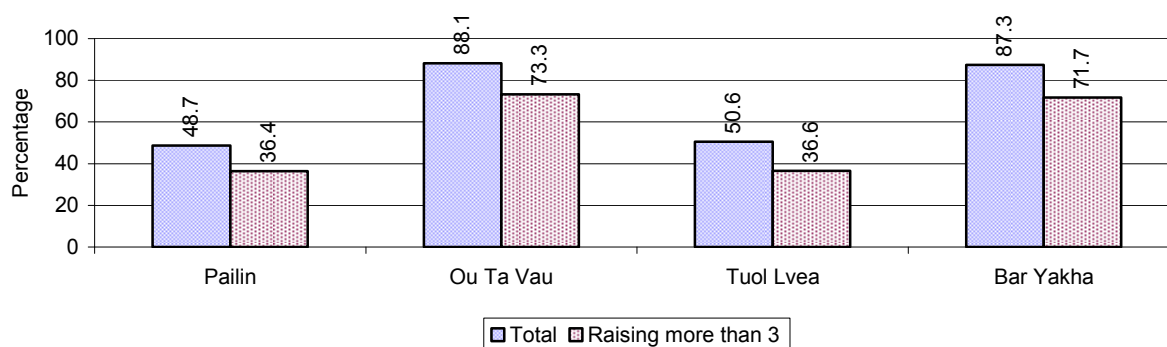
Note: Calculated against the total number of families

2.5.29 Percentage Families raising Pigs, by Commune, in 2008



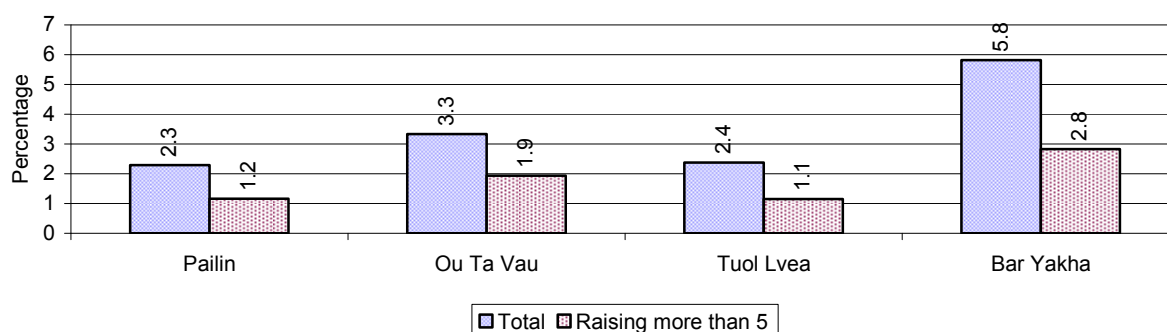
Note: Calculated against the total number of families in the commune

2.5.30 Percentage Families raising Chickens, by Commune, in 2008



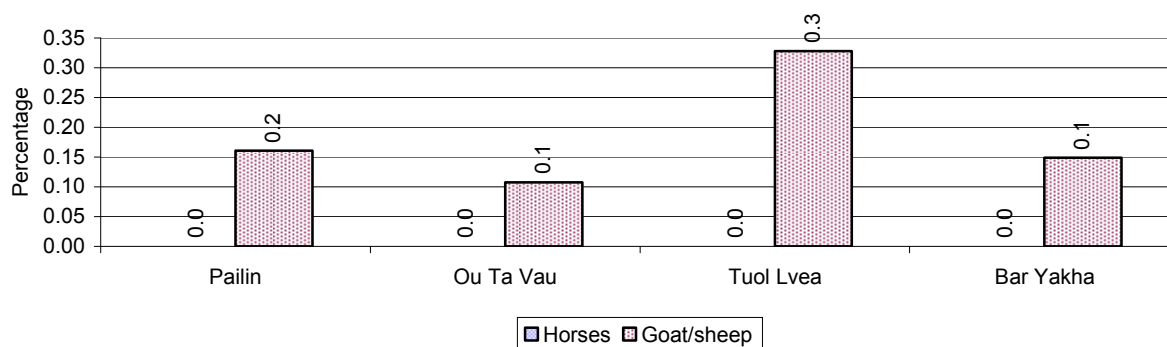
Note: Calculated against the total number of families in the commune

2.5.31 Percentage Families raising Ducks, by Commune, in 2008



Note: Calculated against the total number of families in the commune

2.5.32 Percentage Families raising Horses, Goats or Sheep, by Commune, in 2008

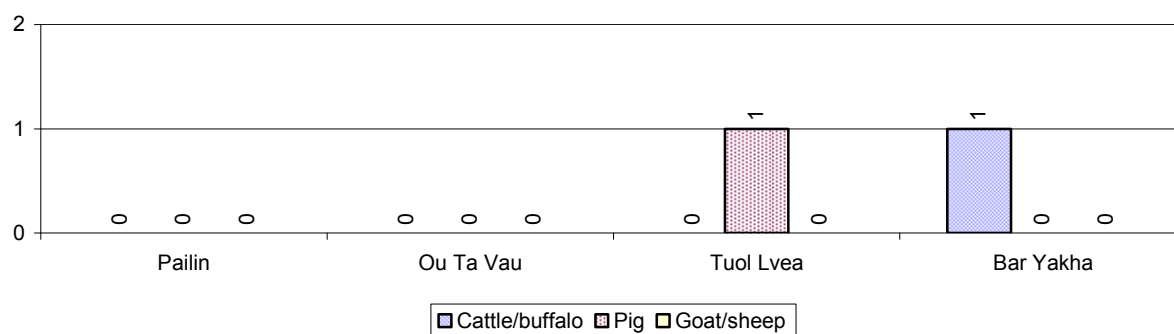


Note: Calculated against the total number of families in the commune

2.5.33 Livestock Farms over 3 years

Description	2006	2007	2008
Number of cattle/buffalo farms	2 farm(s)	2 farm(s)	1 farm(s)
Number of pig farms	27 farm(s)	27 farm(s)	1 farm(s)
Number of goat/sheep farms	0 farm(s)	1 farm(s)	0 farm(s)
Number of chicken farms	177 farm(s)	20 farm(s)	0 farm(s)
Number of duck farms	2 farm(s)	2 farm(s)	0 farm(s)

2.5.34 Number Livestock Farms, by Commune in 2008



Note: Number of farms are recorded by the village chief, not by counting number of livestock in each farm

2.5.35 Number Chicken and Duck Farms, by Commune, for 2008

There were no farms of this type in this District in 2008

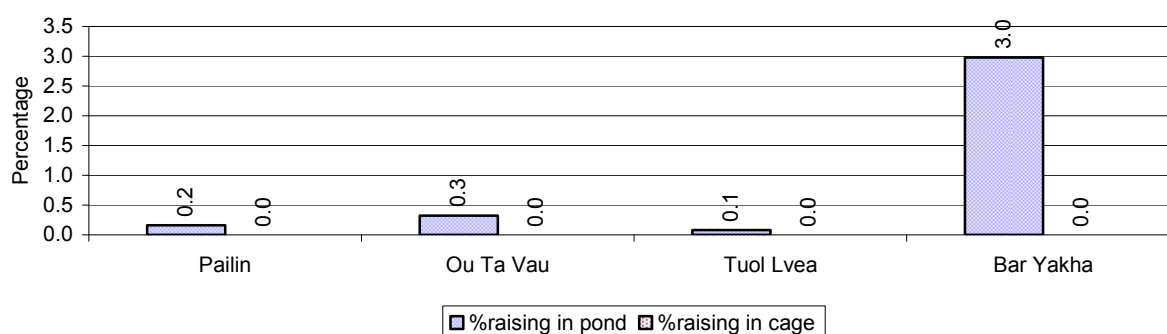
Note: Number of farm places recorded by village chief, not by counting number of livestock in each farm

2.5.36 Families raising Fish over 3 years

Description	2006	2007	2008
Total number of families raising fish	19 families	25 families	31 families
% families raising fish	0%	0%	0%
Number families raising fish in pond	19 families	22 families	31 families
% families raising fish in pond	0%	0 %	0%
Number fish pond	20 pond(s)	20 pond(s)	36 pond(s)
No. of ponds per family	1.1 pond/families	0.9 pond/families	1.2 pond/families
Number of families raising fish in cage	0 families	3 families	0 families
%families raising fish in cage	0 %	0 %	0%
Number of fish cage	0 cage(s)	3 cage(s)	0 cage(s)
No. of fish cage per family	- cage /families	1.0 cage /families	- cage /families

Note: % of families raising fish or fish in ponds or cages is calculated a percentage of the total number of families.

2.5.37 Percentage of Families raising Fish, by Commune, in 2008



Note: Calculated as a percentage of the total number of families in the commune.

2.5.38 Shrimp and Prawn Farming over 3 years

Description	2006	2007	2008
Number of families raising shrimps	0 families	0 families	0 families
% Families raising shrimps	0%	0%	0%
Number of shrimp ponds	0 pond	0 pond	0 pond
Total area raising shrimps	0 ha	0 ha	0 ha
Area per family	-ha/families	-ha/families	-ha/families
Number of families raising prawns	0 families	0 families	0 families
% families raising prawns	0%	0%	0%
Number prawn ponds	0 pond	0 pond	0 pond
Ponds per families	- pond/families	-pond/families	-pond/families
Number of prawn cages	0 cage	0 cage	0 cage
Cages per families	0 cage /families	0 cage /families	0 cage /families

Note: Percentage of families raising either prawns or shrimp is calculated against the number of families, who do aquaculture farming, NOT the total population.

2.5.39 Numbers of Families raising Shrimps and number of Shrimp Ponds, by Commune, in 2008

There were none of these in this District in 2008

2.5.40 Number of Families raising Prawn and Number of Prawn Ponds/Cages, by Commune, in 2008

There were none of these in this District in 2008

3 Social Aspects

3.1 Education

3.1.1 Kindergarten in the District over 3 years

Description	2006	2007	2008
Number of community kindergarten schools	2 school(s)	2 school(s)	2 school(s)
Number of community kindergarten class rooms	2 room(s)	2 room(s)	2 room(s)
Number of community kindergarten classes	2 class(es)	2 class(es)	2 class(es)
Number of community kindergarten teachers	3 person(s)	3 person(s)	3 person(s)
Number of women community kindergarten teachers	3 women	3 women	3 women
Number of state and private kindergarten schools	3 school(s)	4 school(s)	5 school(s)
Number of state and private kindergarten class rooms	4 room(s)	4 room(s)	6 room(s)
Number of state and private kindergarten classes	4 class(es)	5 class(es)	6 class(es)
Number of state and private kindergarten teachers	5 person(s)	7 person(s)	4 person(s)
Number of women state and private kindergarten teachers	5 women	7 women	4 women

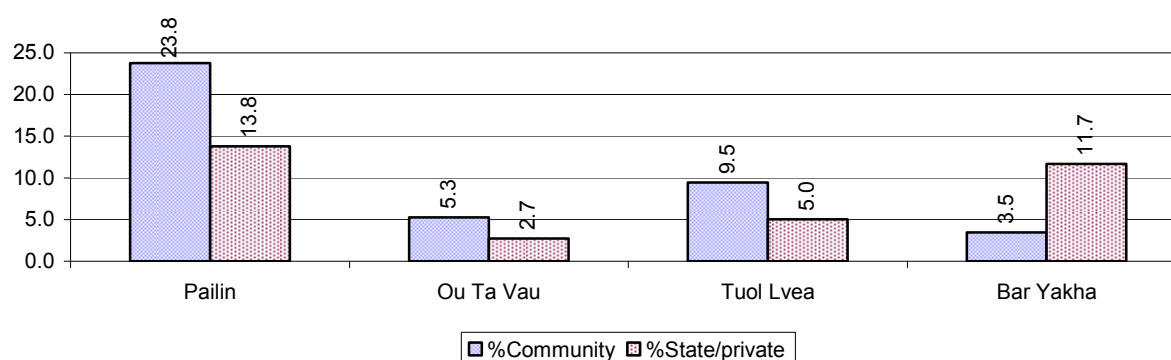
3.1.2 Percentage enrolment at Kindergarten level over 3 years

This table shows the percentage of the total 3-5 year old population attending kindergarten.

Description	2006 %	2007 %	2008	
			%	Number
Total percentage of children, 3-5 yrs, go to kindergarten	20%	27%	21%	473 person(s)
Percentage of children, 3-5 yrs, go community kindergarten	4%	11%	13%	288 person(s)
Percentage children, 3-5 yrs, go state/private kindergarten	16%	16%	8%	185 person(s)

Note: Calculated against the total for that age group

3.1.3 Percentage of Children 3-5 yrs attending Kindergarten, by Commune, in 2008



3.1.4 Basic Education over 3 years

Primary School

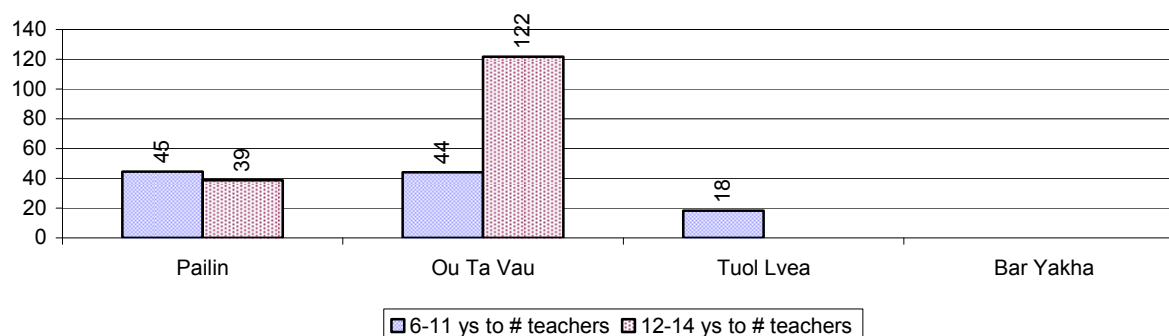
Description	2006	2007	2008
Number of primary schools	18 school(s)	18 school(s)	17 school(s)
Number of primary school rooms	114 room(s)	98 room(s)	78 room(s)
Number of primary classes	136 class(es)	108 class(es)	70 class(es)
Number of primary teachers	153 person(s)	147 person(s)	103 person(s)
Ratio of children 6-11 yrs to school	231	231	236
Ratio of children 6-11 yrs to school room	36	42	51
Ratio of children 6-11 yrs to class	31	39	57
Ratio of children 6-11 yrs to teacher	27	28	39

Note: According to education norm, children 6-11 yrs should attend primary school, while 12-14 yrs should be in lower secondary school, but in reality this varies.

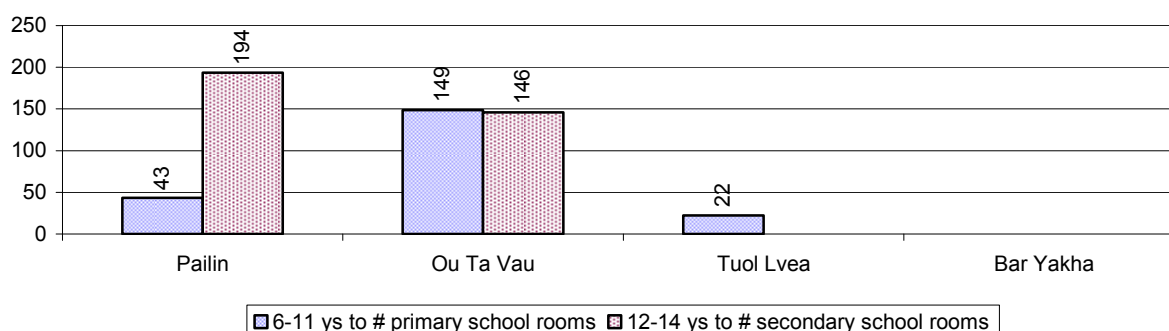
Lower Secondary School

Description	2006	2007	2008
Number of lower secondary schools	3 school(s)	3 school(s)	2 school(s)
Number of lower secondary school rooms	42 room(s)	15 room(s)	10 room(s)
Number of lower secondary classes	50 class(es)	19 class(es)	13 class(es)
Number of lower secondary teachers	72 person(s)	29 person(s)	31 person(s)
Ratio children 12-14 yrs to school	916	860	1,235
Ratio of children 12-14 yrs to school room	65	172	247
Ratio of children 12-14 yrs to class	55	136	190
Ratio of children 12-14 yrs to teacher	38	89	80

3.1.5 Ratio of 6-11 year old and 12-14 year old Children to number of Teachers, by Commune, in 2008



3.1.6 Ratio of 6-11 year old and 12-14 year old Children to number of School Rooms, by Commune, in 2008



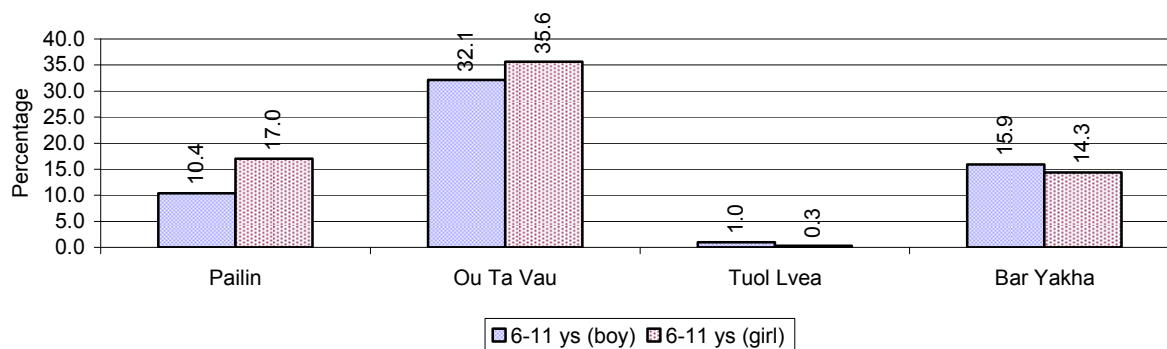
3.1.7 Enrolment status at Primary Level over 3 years

Description	2006 %	2007 %	2008	
			%	Number
Total children aged 6-11 years old	15%	14%	14%	4,006 person(s)
Total children aged 6-11 who are in school	78%	82%	83%	3,309 person(s)
Total children aged 6-11 who are not in school	22%	18%	17%	697 person(s)
Total girls aged 6-11 years old	14%	14%	13%	1,907 person(s)
Total girls aged 6-11 who are in school	75%	80%	81%	1,545 person(s)
Total girls aged 6-11 who are not in school	25%	20%	19%	362 person(s)
Total boys aged 6-11 years old	15%	15%	14%	2,099 person(s)
Total boys aged 6-11 who are in school	82%	84%	84%	1,764 person(s)
Total boys aged 6-11 who are not in school	18%	16%	16%	335 person(s)

Note 1: Percentage is calculated on the basis of the total number of children within 6-11 year age group for the first 3 rows and for the total girls and the total boys aged 6-11 yrs.

Note 2: Number of girls aged 6-11 who are in & not in school is calculated against the total number of girls aged 6-11 yrs. Number boys, 6-11 yrs who are in & not in school are calculated against the total number of boys aged 6-11 yrs.

3.1.8 Percentage of 6-11 year old Children not in School, by Commune, in 2008



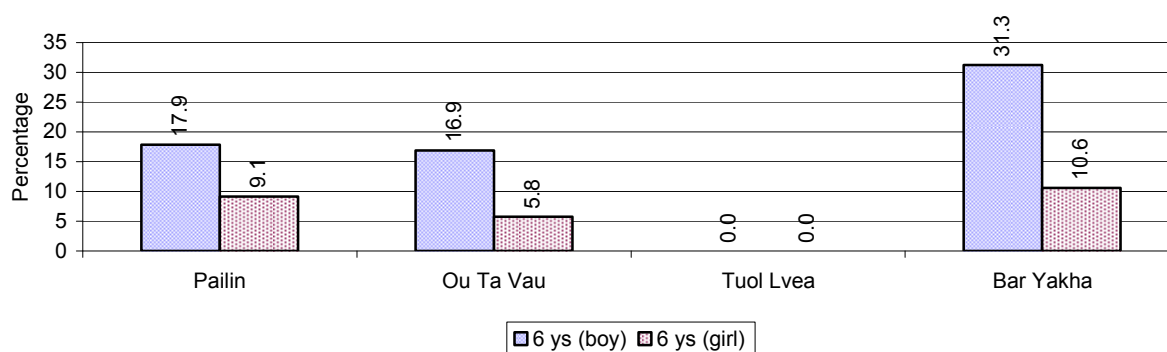
Note: calculated on the basis of the total number of children within 6-11 year age group in the commune.

3.1.9 Enrolment of 6 year old Children over 3 years

Description	2006 %	2007 %	2008	
			%	Number
Total % and number of children aged 6 years old	3%	3%	3%	900 person(s)
Total % of children aged 6 years old in school	71%	75%	87%	779 person(s)
Total % of children aged 6 years old not in school	29%	25%	13%	121 person(s)

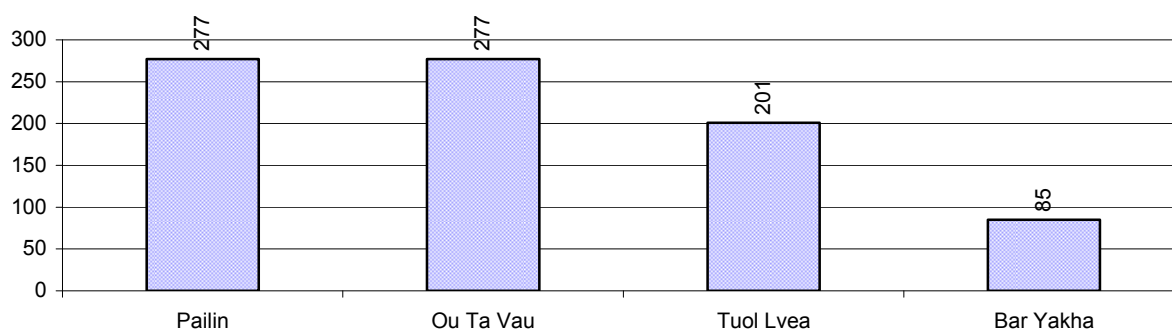
Note: First row calculated as a percentage of total population. Second and third row calculated as a percentage of the total number of 6 year olds.

3.1.10 Percentage of 6 year old Children not in School, by Commune, in 2008



Note: Calculated as a percentage of total 6 year old population

3.1.11 Number of 5 year old Children in each Commune in 2008

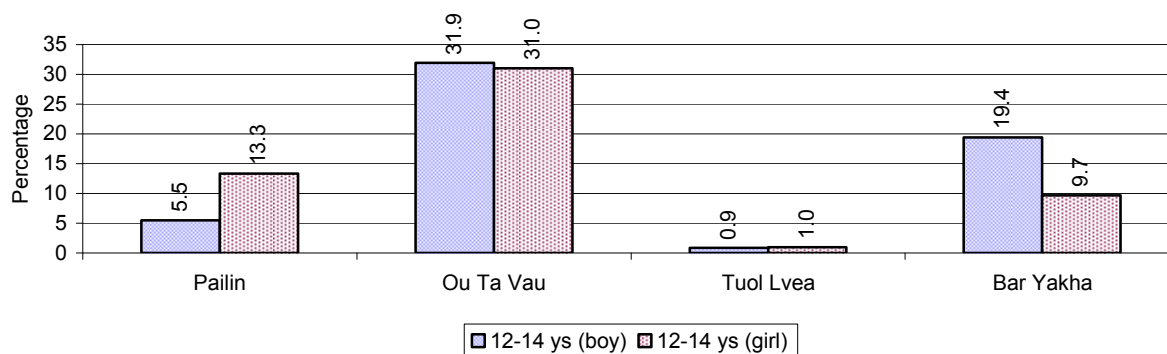


3.1.12 Enrolment at Lower Secondary Level over 3 years

Description	2006 %	2007 %	2008	
			%	Number
Total children aged 12-14 years old	10%	9%	9%	2,469 person(s)
Children aged 12-14 years old in school	82%	85%	85%	2,095 person(s)
Children aged 12-14 years old not in school	18%	15%	15%	374 person(s)
Total girls aged 12-14 years old	10%	9%	8%	1,214 person(s)
Girls aged 12-14 years old in school	81%	84%	84%	1,023 person(s)
Girls aged 12-14 years old not in school	19%	16%	16%	191 person(s)
Total boys aged 12-14 years old	10%	9%	9%	1,255 person(s)
Boys aged 12-14 years old in school	83%	86%	85%	1,072 person(s)
Boys aged 12-14 years old not in school	17%	14%	15%	183 person(s)

Note: Percentage is calculated on the basis of number of the total number of children within 12-14 yrs group, except for the first row of each section which is calculated on the basis of the total population.

3.1.13 Percentage of 12-14 year olds not in School, by Commune, in 2008



Note: Calculated as a percentage of the total 12-14 year old population in each commune

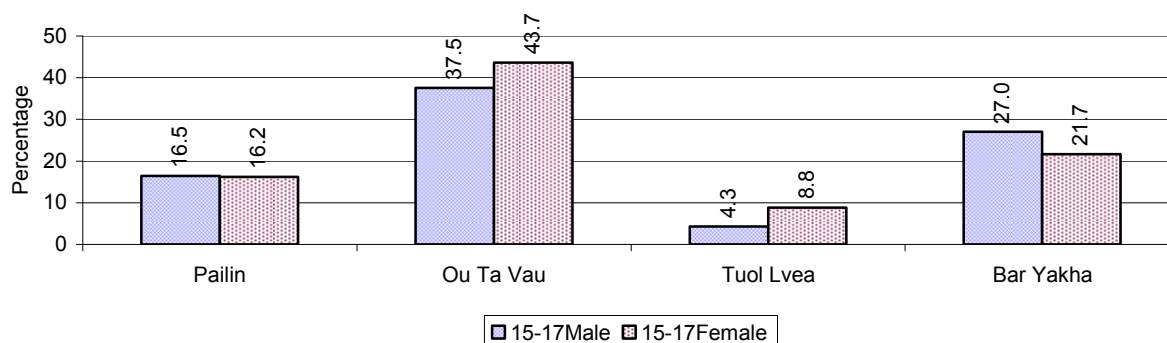
3.1.14 Upper Secondary Schools over 3 years

Description	2006	2007	2008
Number of upper secondary schools	1 school(s)	1 school(s)	1 school(s)
Number of upper secondary school rooms	32 room(s)	37 room(s)	37 room(s)
Number of upper secondary classes	32 class(es)	36 class(es)	35 class(es)
Number of upper secondary teachers	14 person(s)	76 person(s)	84 person(s)
Ratio of 15-17 yr olds to number of school	2,263	2,370	2,619
Ratio of 15-17 yr olds to number of school room	71	64	71
Ratio of 15-17 yr olds to number of classes	71	66	75
Ratio of 15-17 yr olds to number of teacher	162	31	31

3.1.15 Enrolment of 15-17 year old teenagers over 3 years

Description	2006	2007	2008
Number of teenage, 15-17 years old	2,263 person(s)	2,370 person(s)	2,619 person(s)
Number of teenage, 15-17 years old, who are not studying	666 person(s)	565 person(s)	562 person(s)
Percentage of teenage, 15-17 years old not studying	29%	24%	21%

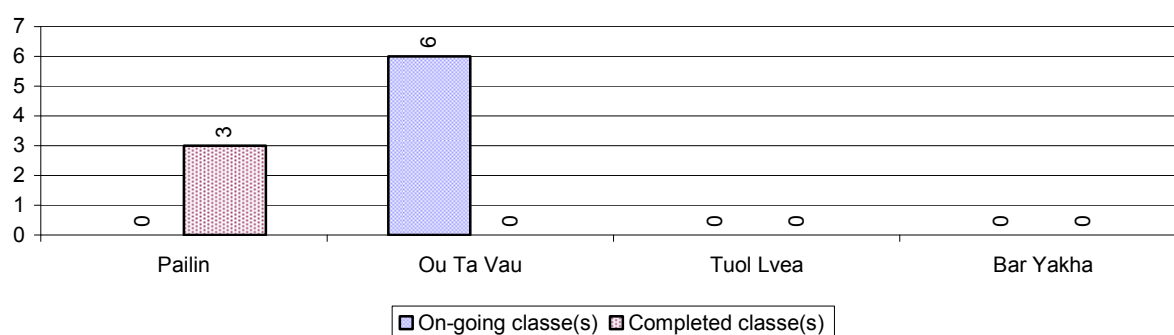
3.1.16 Percentage of 15-17 year old Teenagers not at School, by Commune, in 2008



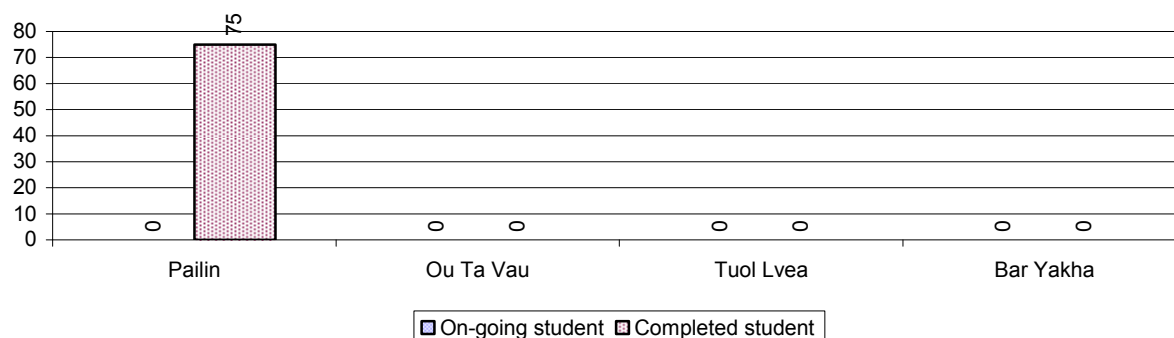
3.1.17 Literacy Classes as of 2008

Literacy classes	Organized by:		Other Program(s)	Total
	PDoEYS	NGOs		
Number of On-going literacy classes	6 class(es)	0 class(es)	0 class(es)	6 class(es)
Number of literacy students in on-going classes	0 person(s)	0 person(s)	0 person(s)	0 person(s)
Completed literacy class(es)	3 classes	0 classes	0 classes	3 classes
Number of literacy students that have completed literacy classes	75 person(s)	0 person(s)	0 person(s)	75 person(s)
Number of students that passed	71 person(s)	0 person(s)	0 person(s)	71 person(s)

3.1.18 Number of on-going and completed Literacy Classes, by Commune, in 2008



3.1.19 Students of on-going & completed Literacy Classes, by Commune, in 2008

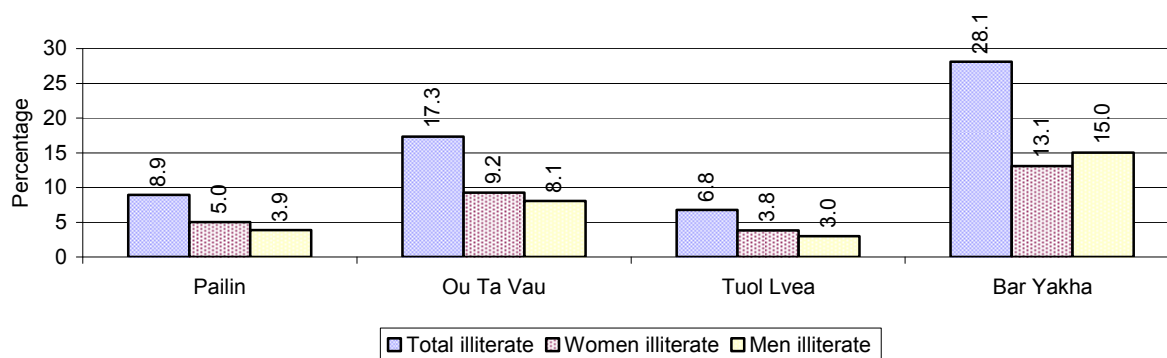


3.1.20 Percentage of illiterate People between 15-60, over 3 years

Illiteracy Status	2006 %	2007 %	2008	
			%	Number
Illiterate people, 15-60 years old	15%	14%	13%	2,314 person(s)
Illiterate females, 15-60 years old	8%	7%	7%	1,224 person(s)
Illiterate people, 15-17 years old	10%	8%	6%	153 person(s)
Illiterate females, 15-17 years old	4%	4%	2%	65 person(s)
Illiterate people, 18-24 years old	10%	10%	8%	339 person(s)
Illiterate females, 18-24 years old	4%	5%	4%	179 person(s)
Illiterate people, 25-60 years old	17%	16%	16%	1,822 person(s)
Illiterate females, 25-60 years old	9%	9%	9%	980 person(s)

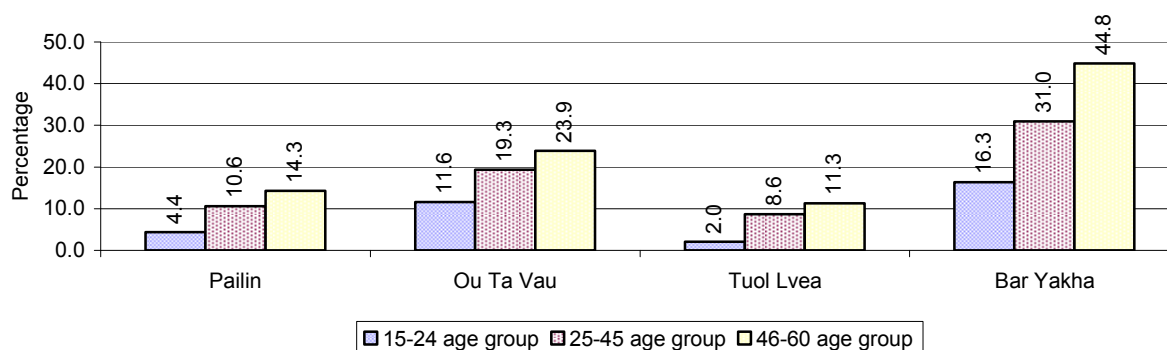
Note: Percentage is calculated on the basis of number of people in age each group.

3.1.21 Percentage illiterate People among 15-60 yrs old, by Commune, in 2008



Note: Percentages are calculated on the basis of number of people in that age group.

3.1.22 Percentage illiterate People for 15-24 yrs, 25-45 yrs and 46-60 yrs, by Commune, in 2008



Note: Percentage of illiterate people in each age group is calculated on the basis of number of people in that age group.

3.2 Health

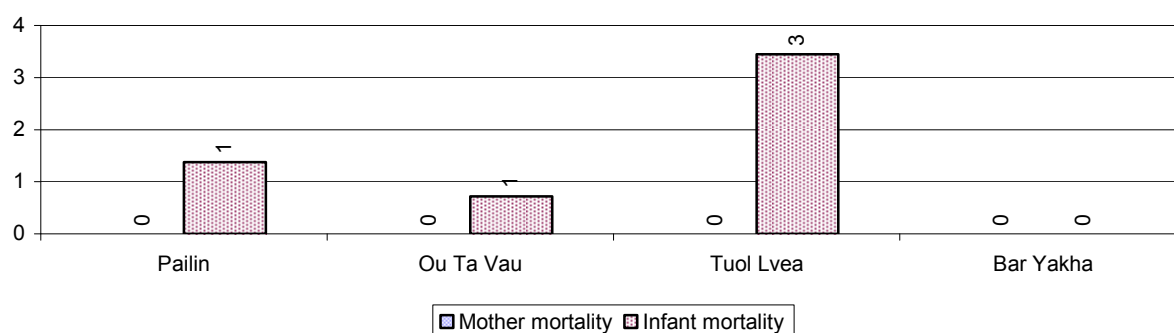
3.2.1 Health Situation of Women and Children, over 3 years

Description	2006	2007	2008
Number families with a birth during the year	401 families	445 families	567 families
Number of women who had their baby delivered by a TBA	143 person(s)	138 person(s)	122 person(s)
Percentage of women who had their baby delivered by a TBA	36 %	31 %	22 %
Number of women who had their baby delivered by a midwife	258 person(s)	307 person(s)	445 person(s)
Percentage of women had their baby delivered by a midwife	64 %	69 %	78 %
Number of mothers who died within 1 month of giving birth	0 person(s)	2 person(s)	0 person(s)
Mothers who died within 1 month of giving birth per 100,000 families having a delivery	0	449	0
Number of infants born during the year	401 person(s)	445 person(s)	576 person(s)
Number of Infants who died within 1 month	7 person(s)	5 person(s)	5 person(s)
Infants mortality within 1 month per 1,000 births	17	11	9
Number of children who died below the age of 5.	22 person(s)	12 person(s)	58 person(s)

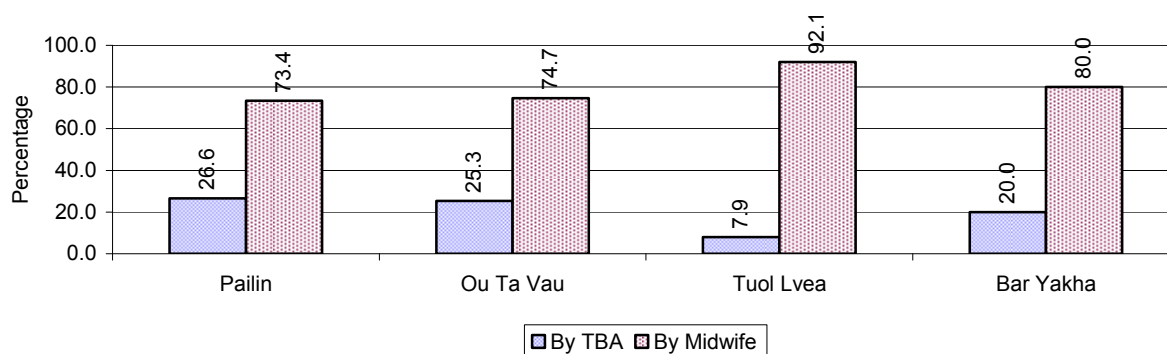
Description	2006	2007	2008
Number of infants, aged 9-12 months, born during the year	245 person(s)	255 person(s)	373 person(s)
Nr. infants, aged 9-12 months, not receiving full immunization	75 person(s)	30 person(s)	25 person(s)
% of 9-12 months infants, not receiving full immunization	31 %	12 %	7 %

Note: TBA = Traditional Birth Attendant

3.2.2 Mothers dying within 0 days to 1 month of giving Birth and Infants dying within 1 month in 2008, by Commune

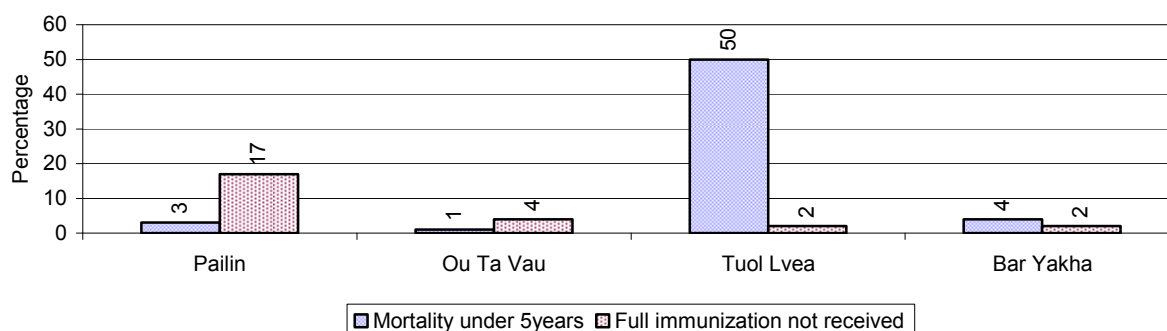


3.2.3 Percentage of Women delivering with a TBA or Midwife, by Commune



Note: Calculated as a percentage of total deliveries

3.2.4 Percentage of Children dying below 5 & of 9-12 months not receiving full Immunization, by Commune, in 2008



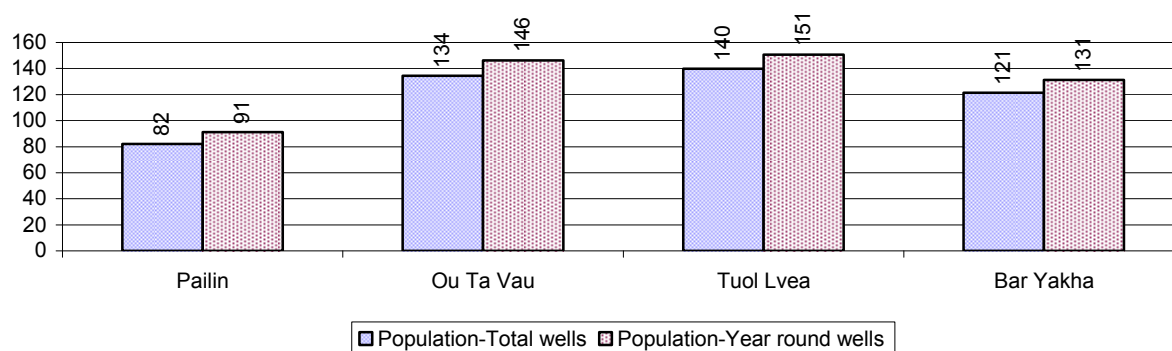
Note: Mortality rate calculated as a percentage of the total 5 year old population. Lack of immunization received calculated as a percentage of the total number 9-12 months olds there are

3.3 Water and Sanitation

3.3.1 Number of different types of Wells over 3 years

Type of wells	Number of wells by year		
	2006	2007	2008
<i>Total number of pumped or mixed wells</i>	168	179	183
Year-round usable pumped or mixed wells	165	167	168
Dry season unusable pump or mixed wells	3	12	15
Pump or mixed wells needing repair/rehabilitation	17	22	32
<i>Total number of ring wells</i>	87	82	87
Year-round usable ring wells	71	72	78
Dry season unusable ring wells	16	10	9
Ring wells needing repair/rehabilitation	13	10	2
<i>Total number of unprotected dug wells</i>	19	9	6
Year-round usable unprotected dug wells	5	3	3
Dry season unusable unprotected dug wells	14	6	3

3.3.2 Ratio of People to Wells, by Commune, in 2008

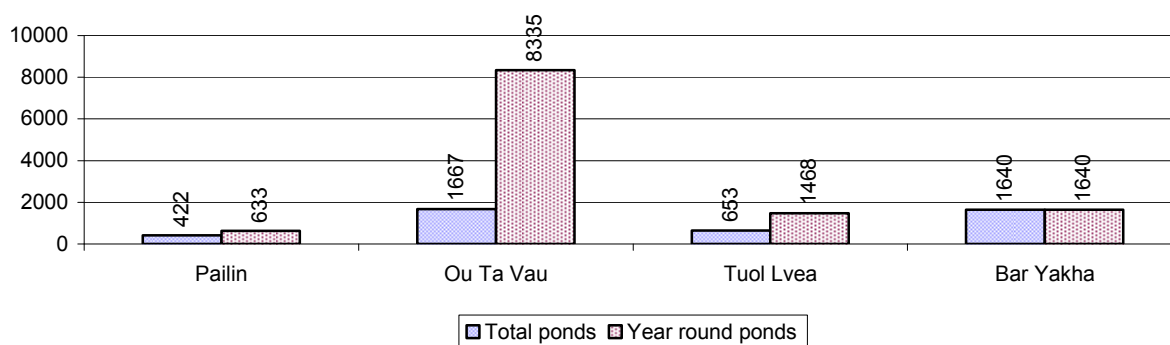


Note: Year-round wells excluding unprotected wells

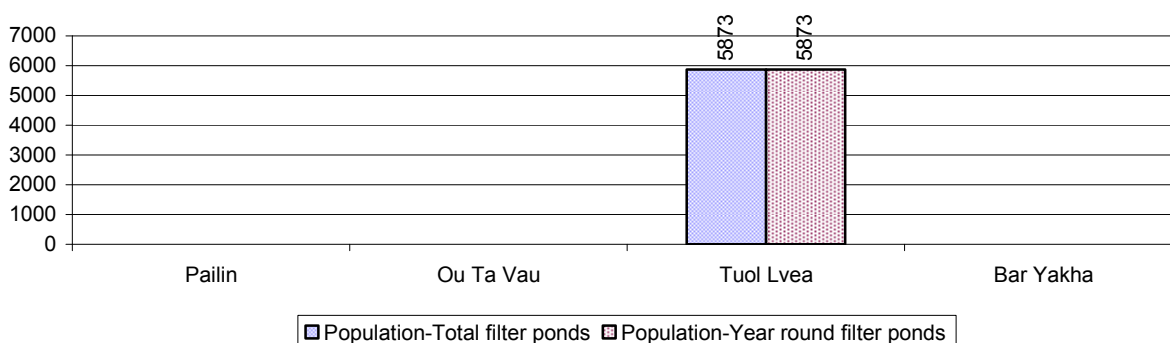
3.3.3 Potable Ponds over 3 years

Type of Pond	2006	2007	2008
<i>Total number of normal-type ponds</i>	32 pond	32 pond	43 pond
Year-round usable normal-type ponds	18 pond	16 pond	25 pond
Dry season unusable normal-type ponds	14 pond	16 pond	18 pond
Normal-type ponds needing repair/rehabilitation	6 pond	8 pond	7 pond
<i>Total number of filter ponds</i>	0 pond	1 pond	1 pond
Year-round usable filter ponds	0 pond	1 pond	1 pond
Filter ponds, dry season unusable	0 pond	0 pond	0 pond
Filter ponds needing repair/rehabilitate	0 pond	0 pond	0 pond

3.3.4 Ratio of People to normal Ponds, by Commune in 2008



3.3.5 Ratio of People to Filter Ponds, by Commune, in 2008

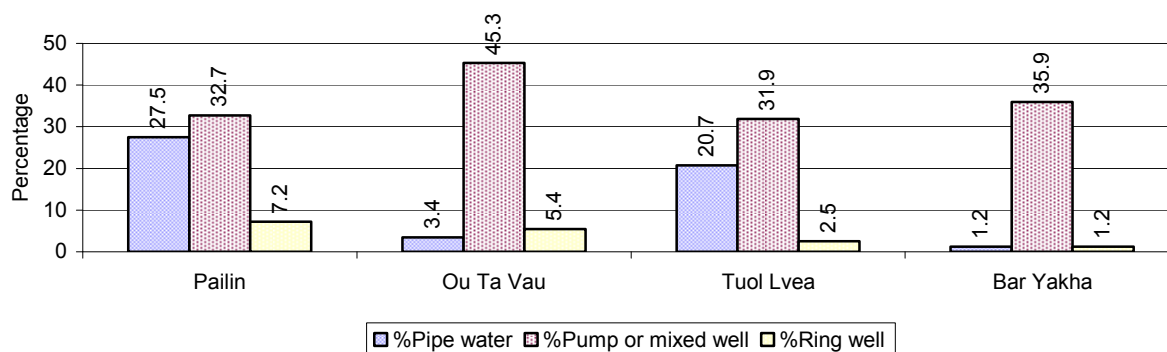


3.3.6 Source of potable Water for Households, over 3 years

Water sources	2006	2007	2008	
	%	%	%	Number
Families using water from purification system	10%	10 %	16 %	1,009 families
Families using water from pump, mixed wells	41%	37 %	37 %	2,287 families
Families using water from ring wells and open dug wells	8%	4 %	5 %	320 families
Families using water from pond	2%	2 %	4 %	271 families
Families using water from rain water storage	5%	8 %	11 %	711 families
Families using water from rivers, lakes, natural ponds and reservoirs	33%	38 %	26 %	1,643 families

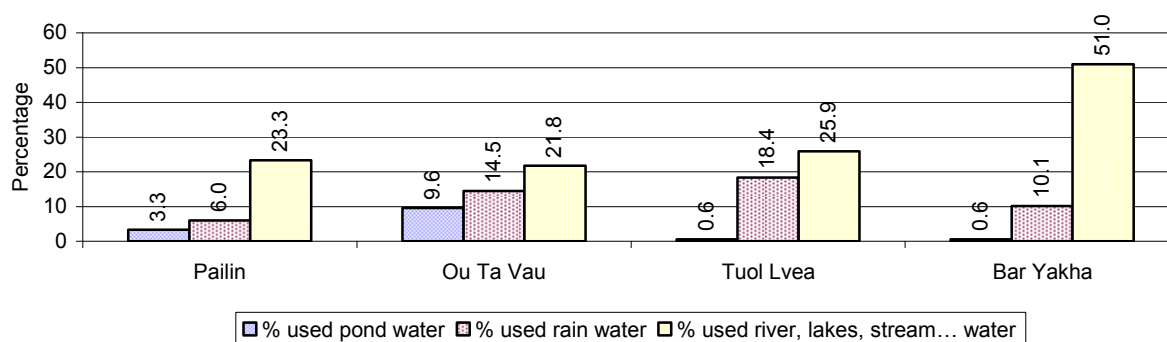
Note: Calculated as a percentage of the total number of families.

3.3.7 Percentage Families using different Water Sources, by Commune, in 2008



Note: Calculated as a percentage of the total number of families in each commune

3.3.8 Percentage Families using Water from Rain Water Storage, Ponds and natural Sources (rivers/lakes/natural ponds/reservoirs), by Commune, 2008



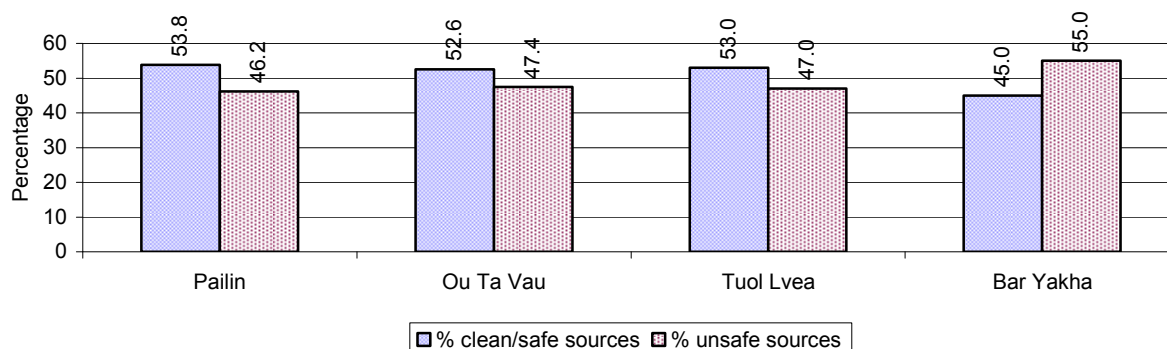
Note: Calculated as a percentage of the total number of families in each commune

3.3.9 Drinking Water Sources in the dry Season over 3 years

Percentage Families that get drinking water from:	2006	2007	2008	
	%	%	%	Number
from clean/safe sources	45 %	36 %	52 %	3,265 families
from unsafe sources	55 %	64 %	48 %	2,976 families

Note: Calculated as a percentage of the total number of families.

3.3.10 Percentage Families using safe and unsafe Water Sources in the dry Season, by Commune, in 2008



Note: Calculated as a percentage of the total number of families in each commune.

3.3.11 Drinking Water Purification by Households, over 3 years

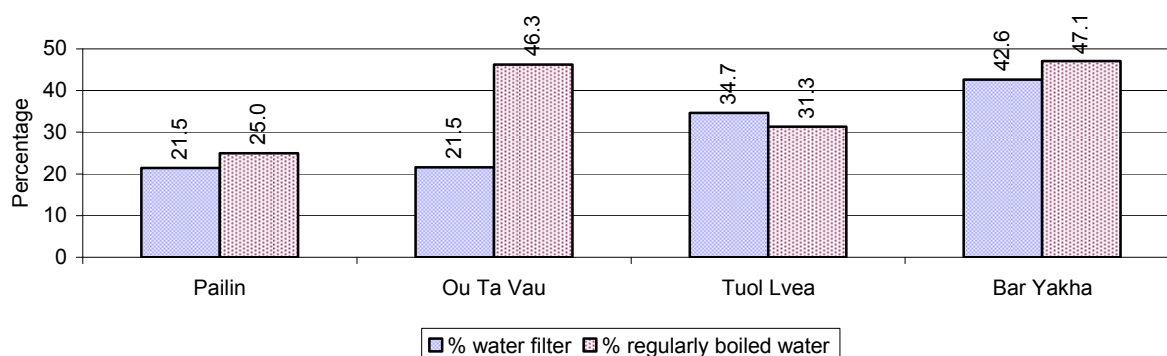
This table shows the different ways families make water safe for drinking.

Families, who:	2006	2007	2008	
	%	%	%	Number
Filter water for drinking	37%	37%	26 %	1,644 families
Boil water for drinking	35%	36%	35 %	2,181 families

Note: Calculated as a percentage of the total number of families

3.3.12 Percentage Families filtering Water or regularly boiling Water, by Commune, in 2008

This graph shows the different ways families make drinking water safe.



Note: Calculated on as a percentage of the total number of families in each commune.

3.3.13 Families' access to Water, over 3 years

Families access to water	2006	2007	2008	
	%	%	%	Number
Families with water at home or in less than 150m	63%	59%	56 %	3,465 families
Families with water 150m or more away from home	30%	35%	27 %	1,688 families

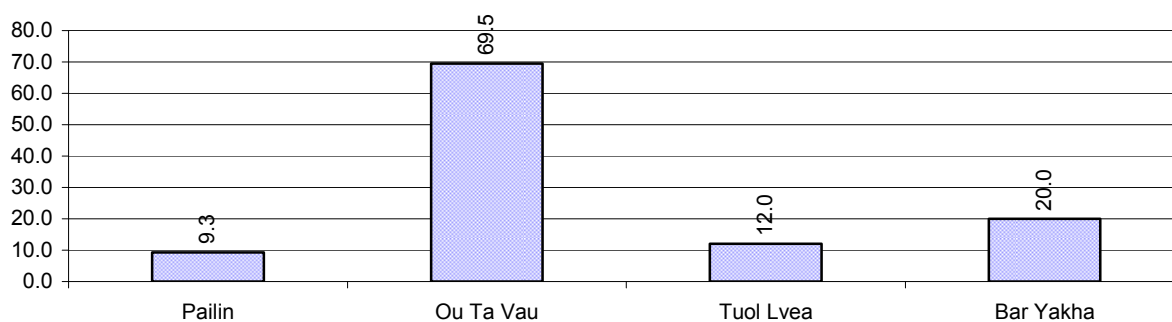
Note: Calculated as a percentage of the total number of families

3.3.14 Ratio of people to Latrines over 3 years

Description	2006	2007	2008	
	Ratio	Ratio	Ratio	Number
Ratio of people to latrines	21.4	17.9	14.5	1,999.0

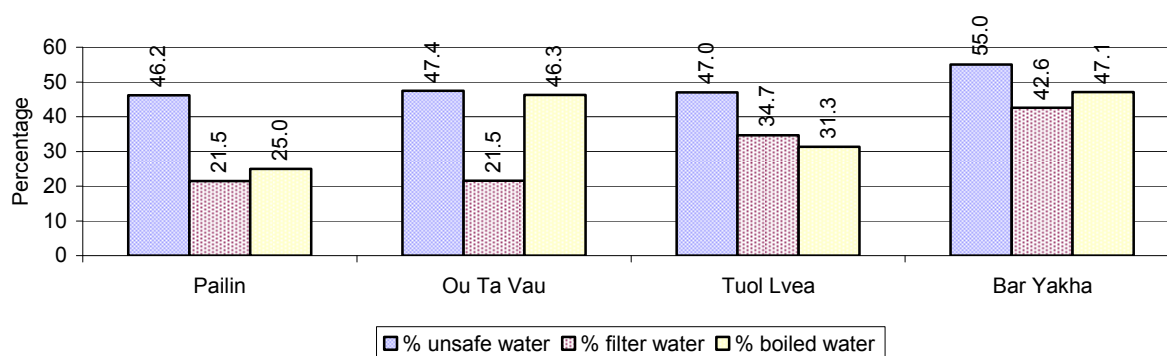
Note: Ratio calculated by dividing the number of houses with latrines by the total population

3.3.15 Ratio of People to Latrines, by Commune, in 2008



Note: Ratio calculated by dividing the number of houses with latrines by the total population in a Commune.

3.3.16 Percentage of Families drinking boiled, filtered or unsafe Water, by Commune, in 2008



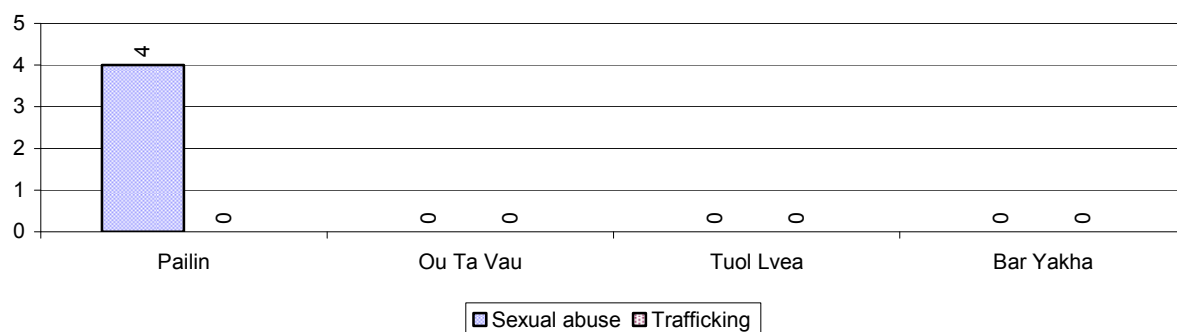
Note: Calculated as a percentage of the total number of families in each commune.

3.4 Vulnerable groups

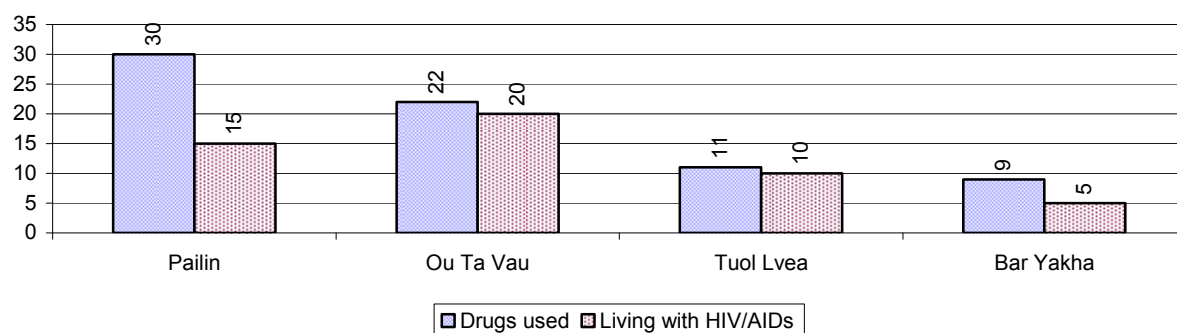
3.4.1 Vulnerable Groups in need of special Protection over 3 years

Vulnerable groups	2006	2007	2008
Victims of sexual abuse	1 person(s)	0 person(s)	4 person(s)
Victims of human trafficking	0 person(s)	0 person(s)	0 person(s)
Families with family member(s) using drugs	23 families	39 families	72 families
Families with family member(s) living with HIV/AIDS	32 families	45 families	50 families
Children under 18 yrs old whose parent died of AIDS	35 person(s)	50 person(s)	32 person(s)
Orphaned/abandoned children under 18 yrs old (all cases)	360 person(s)	112 person(s)	59 person(s)
Elderly persons without guardian	143 person(s)	61 person(s)	48 person(s)
Disabled people able to earn an income	260 person(s)	255 person(s)	119 person(s)
Disabled people unable to earn an income	43 person(s)	52 person(s)	32 person(s)
Disabled people under 18 yrs old	27 person(s)	26 person(s)	16 person(s)
Victims of natural disasters	521 families	208 families	388 families
Victims of land mines and unexploded weapons	46 person(s)	3 person(s)	23 person(s)

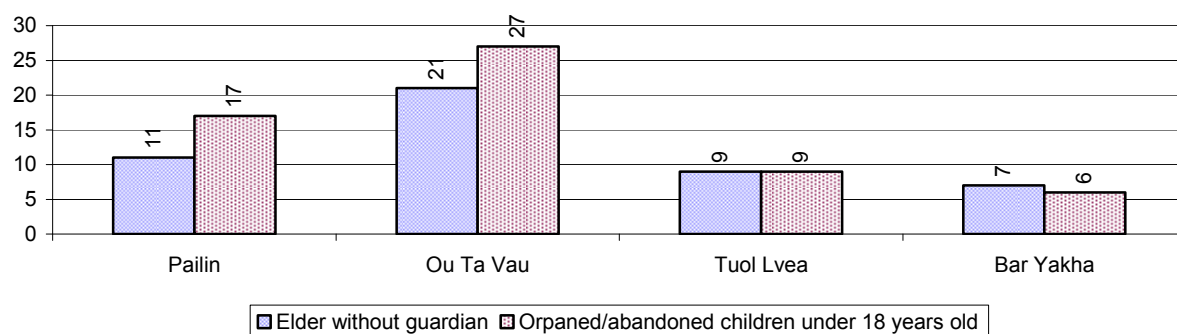
3.4.2 Registered Victims of sexual Abuse or Trafficking, by Commune, for 2008



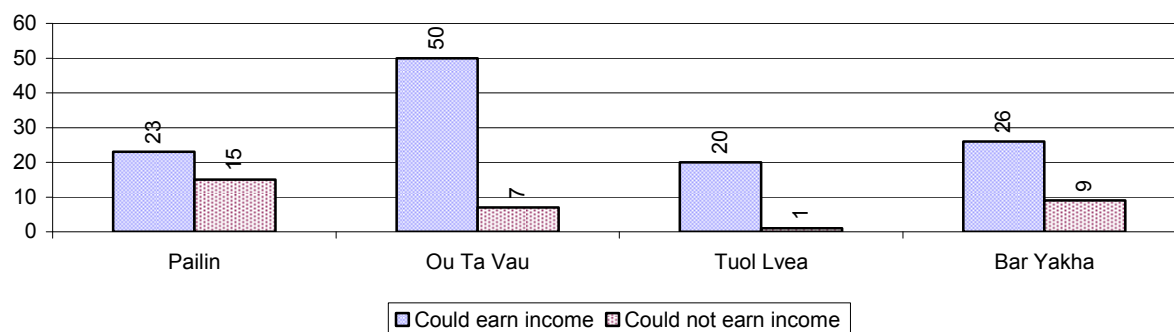
3.4.3 Registered Families with Member(s) using Drugs or living with HIV/AIDS, by Commune, for 2008



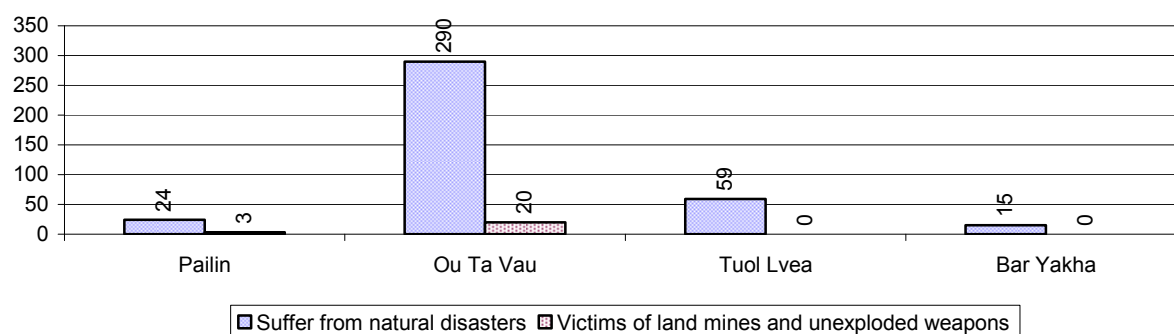
3.4.4 Elderly Persons without a Guardian and orphaned/abandoned Children under 18 years old, by Commune, for 2008



3.4.5 Number of disabled People who could or could not earn an Income, by Commune, for 2008



3.4.6 Number of Families who suffered from natural Disasters, and number of Victims of Land Mines and unexploded Weapons, by Commune, in 2008



3.5 Migration

3.5.1 Migration over 3 years

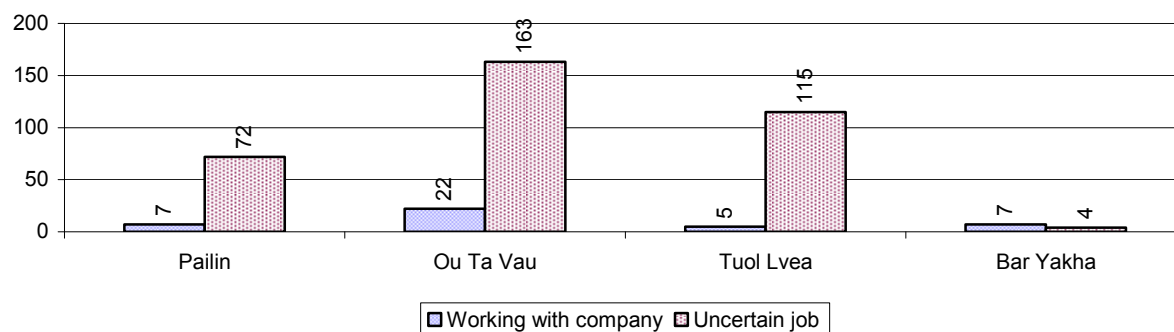
Description	2006	2007	2008
Number of families permanently in-migrated	139 families	88 families	229 families
Total number of people	954 person(s)	397 person(s)	566 person(s)
Total number of female	387 person(s)	190 person(s)	289 person(s)
Number of families permanently out-migrated	187 families	180 families	570 families
Total number of people	687 person(s)	789 person(s)	1,373 person(s)
Total number of female	318 person(s)	417 person(s)	674 person(s)
Number of families staying temporarily	260 families	211 families	502 families
Total number of people	959 person(s)	843 person(s)	1,783 person(s)
Total number of female	426 person(s)	443 person(s)	894 person(s)

3.5.2 Job Migration

Description	2006	2007	2008
Number of people migrated to work with company/factory	0%	0%	0%
Number of people migrated to work, but have uncertain jobs	2%	2%	2%

Note: Calculated as a percentage of the total population of 18-60 year olds

3.5.3 Number of People working outside their home Villages in a Company/Factory or with an uncertain Job in 2008

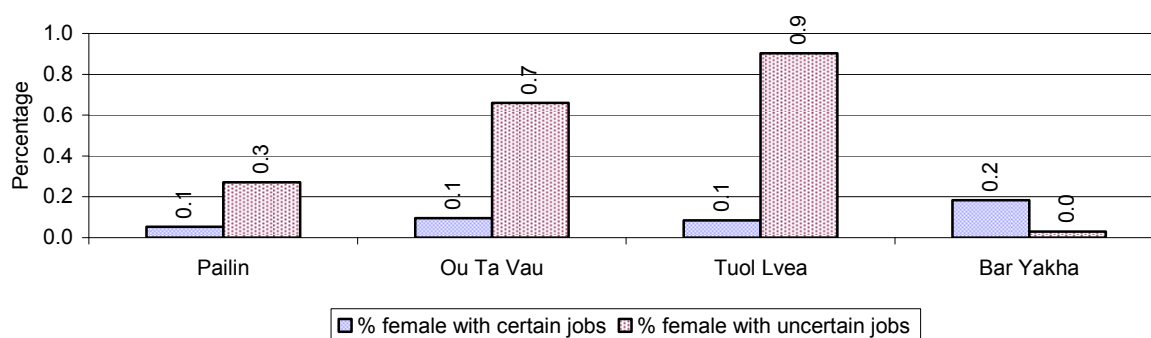


3.5.4 Female migration over 3 years

Description	2006 %	2007 %	2008	
			%	Number
Total number of migrants	0.9%	1.1%	1.4%	395 person(s)
Number of female migrants	0.4%	0.5%	0.6%	165 person(s)
Total number of migrants, who go to work with company/factory (with certain jobs)	0.1%	0.1%	0.1%	41 person(s)
Number of female migrants with certain jobs	0.1%	0.1%	0.1%	25 person(s)
Total number of migrants with uncertain jobs	0.8%	0.9%	1.2%	354 person(s)
Number of female migrants with uncertain jobs	0.3%	0.4%	0.5%	140 person(s)

Note: Calculated as a percentage of the total population

3.5.5 Percentage female Migrants with certain and uncertain Jobs, by Commune, in 2008



Note: Calculated as a percentage of the total population of the commune

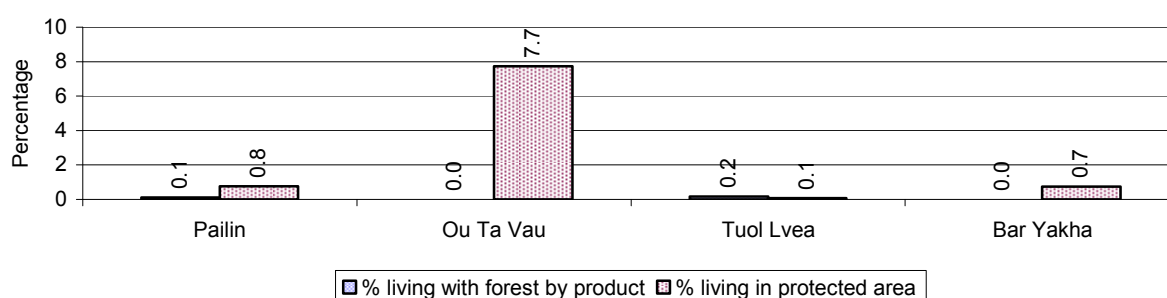
4 Natural Resources and Environment (NRE)

4.1 Families involved with NRE issues over 3 years

Description	2006 %	2007 %	2008	
			%	Number
Families living with forest by products	0 %	0 %	0 %	5 families
Families living in a protected area	3 %	0 %	3 %	169 families
Houses with access to garbage collection service	1 %	2 %	0 %	2 families
Families affected by environmental pollution	1 %	2 %	1 %	37 families
Families using chemical fertilizer	11 %	5 %	9 %	563 families
Families using chemical pesticide	41 %	47 %	61 %	3,833 families

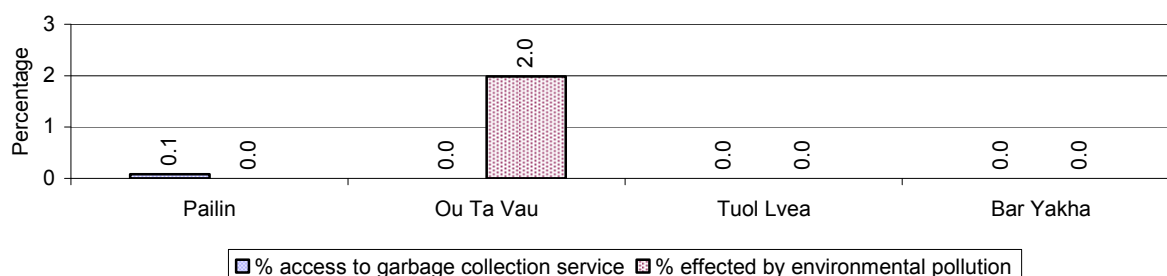
Note: Calculated as a percentage of the total number of families

4.2 Percentage of Families involved with Natural Resource issues, by Commune, for 2008



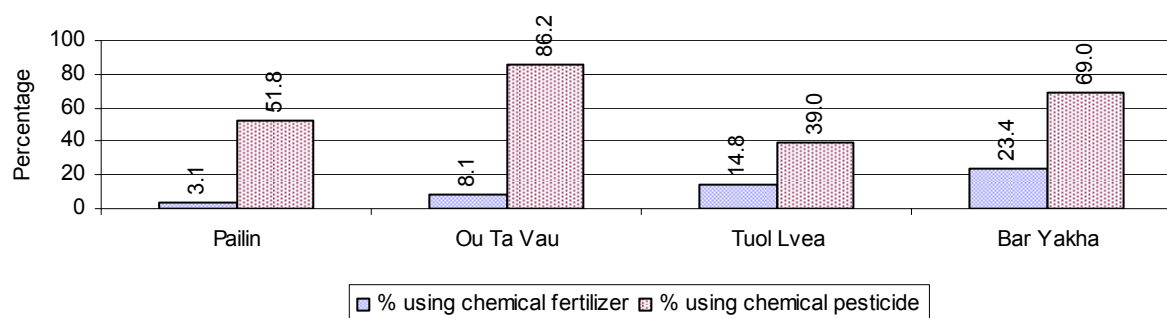
Note: Calculated as a percentage of the number of families in each commune

4.3 Percentage Houses with access to Garbage collection and Families affected by environmental Pollution, by Commune, for 2008



Note: Garbage collection is calculated as a percentage of the total number of houses in each commune and families affected by environmental pollution is calculated as a percentage of the total number of families in each commune.

4.4 Percentage Families using chemical Fertilizer and chemical Pesticides, by Commune, for 2008



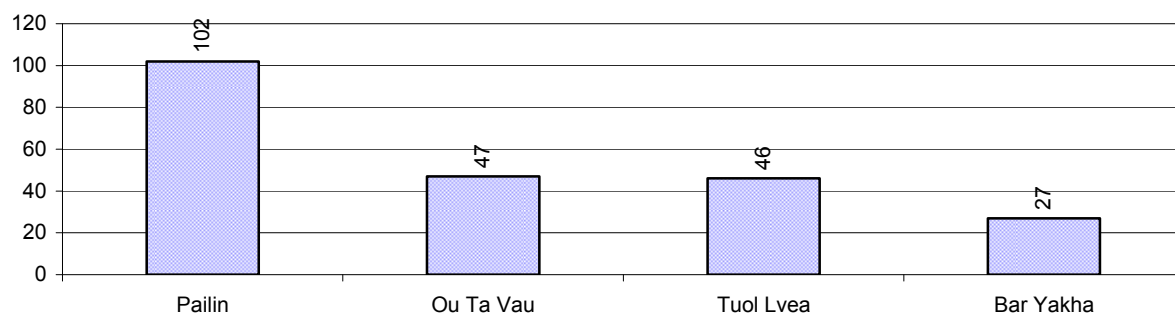
Note: Calculated as a percentage of the total number of families in each commune

5 Administration and Security

5.1 Birth Registration across 3 years

Description	2006	2007	2008
Number of infants to be registered	394 person(s)	440 person(s)	571 person(s)
Number of unregistered infants the year	124 person(s)	188 person(s)	222 person(s)
Percentage of infants unregistered	31 %	43 %	39 %

5.2 Number of unregistered Infants born in 2008, by Commune

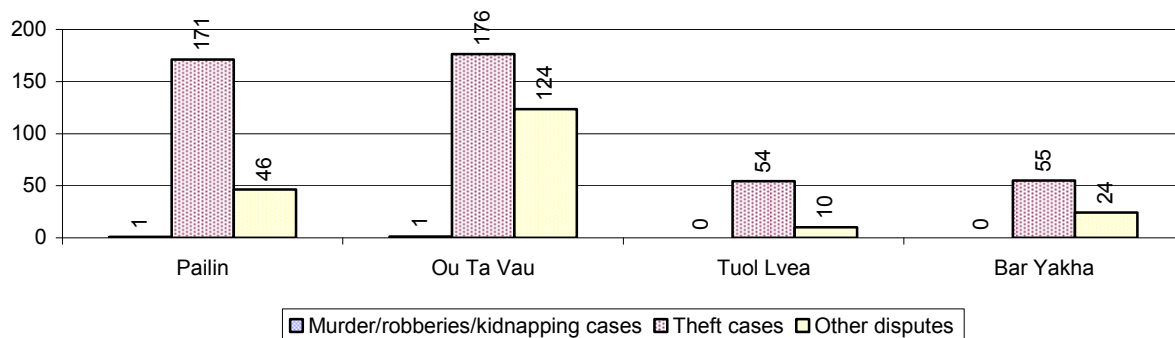


5.3 Registered criminal Cases over 3 years

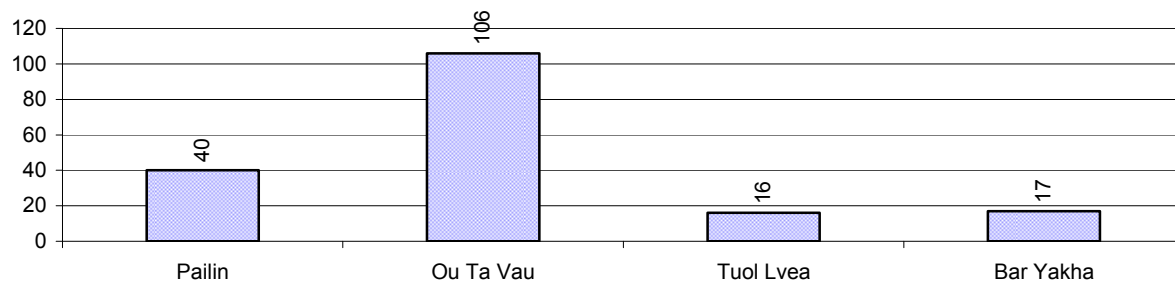
Description	2006	2007	2008
Murders, robberies and kidnapping cases	11 case(s)	4 case(s)	2 case(s)
Theft cases	241 case(s)	425 case(s)	392 case(s)
land dispute cases	138 case(s)	166 case(s)	179 case(s)
Other disputes cases	186 case(s)	197 case(s)	170 case(s)

Note: this reflects only registered criminal cases

5.4 Registered criminal Cases per 10,000 people, by Commune, for 2008



5.5 Number of registered Land Disputes, by Commune, in 2008

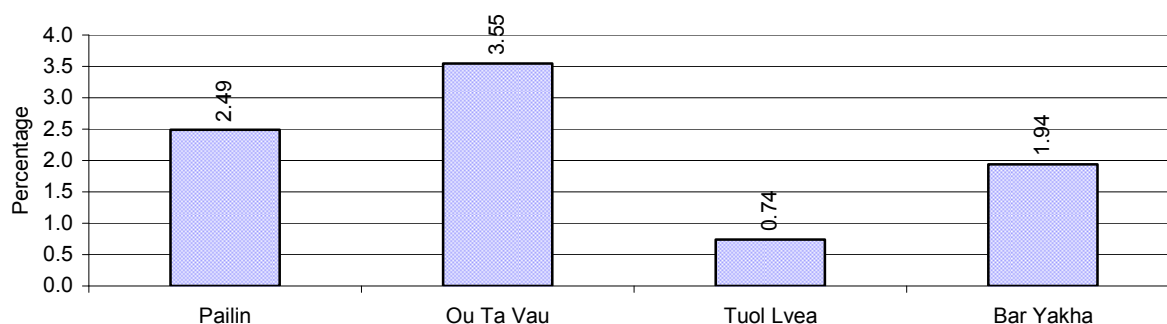


6 Gender

6.1 Registered Domestic Violence over 3 years

Description		2006	2007	2008
Families experiencing domestic violence		121 families	122 families	150 families(s)
% families experiencing domestic violence		2 %	2 %	2 %
Domestic violence cases reported by village chiefs		34 case(s)	56 case(s)	98 case(s)
Type	Physical violence	18 case(s)	33 case(s)	41 case(s)
	Sexual violence	3 case(s)	4 case(s)	5 case(s)
	Mental violence	7 case(s)	7 case(s)	30 case(s)
	Household economic violence	6 case(s)	12 case(s)	22 case(s)
Number of administrative decisions on domestic violence		17 case(s)	52 case(s)	66 case(s)
% of administrative decisions on domestic violence		50 %	93 %	67 %

6.2 Percentage of registered cases of Families experiencing domestic Violence, by Commune, in 2008



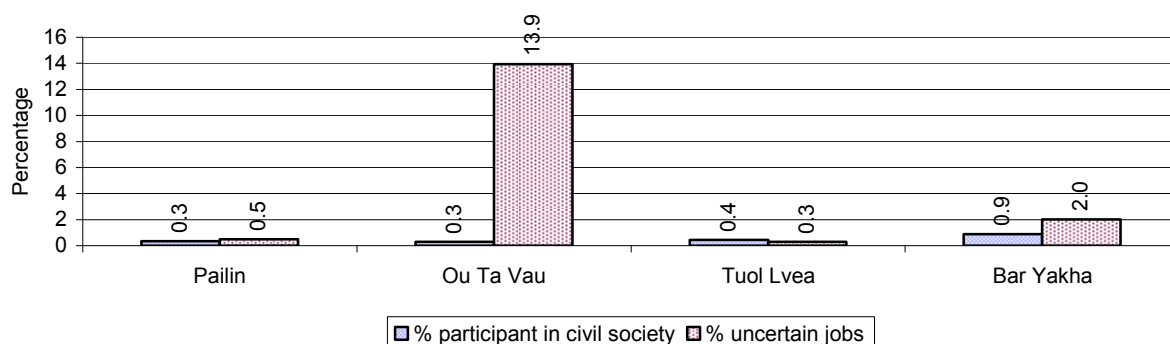
Note: Calculated as a percentage of the total number of families in each commune

6.3 Women's involvement over 3 years

Description	2006 %	2007 %	2008	
			%	Number
People participating in civil society	2%	1%	1%	225 person(s)
Women participating in civil society	1%	0%	0%	117 person(s)
People, 18-60 yrs, with uncertain/irregular jobs	4%	2%	7%	1,063 person(s)
Women, 18-60 yrs, with uncertain/irregular jobs	1%	1%	5%	685 person(s)

Note: Participation can be in NGOs, CBOs, credit groups, women's unions, parties and other civil society organizations. The first section is calculated as a percentage of the total population. The second section is calculated as a percentage of the total 18-60 year old population.

6.4 Percentage of Female Participants in Civil Society and of 18-60 year women with uncertain Jobs, by Commune, in 2008



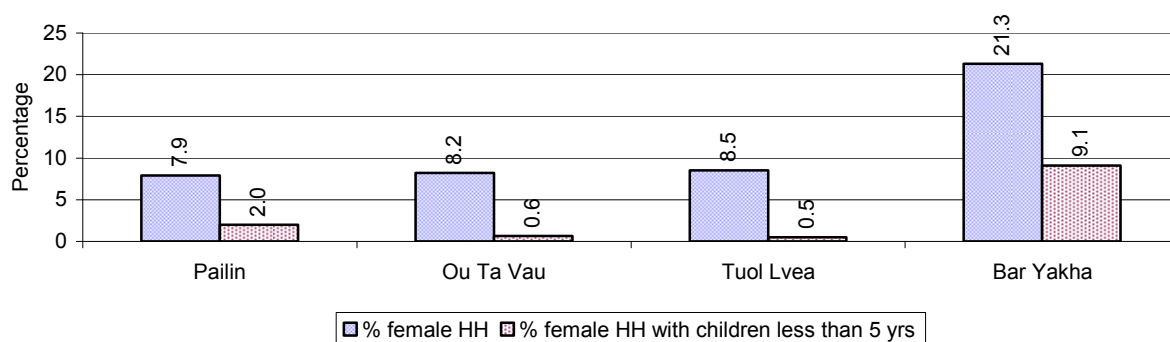
Note: Percentage of female participants in civil society is calculated as a percentage of the total population per commune. The percentage of 18-60 years old women with uncertain jobs is calculated as a percentage of the total 18-60 year old population per commune.

6.5 Female-headed Households over 3 years

Families with:	2006	2007	2008	
	%	%	%	Number
Households in which a woman is the family head	7%	9%	10%	597 families
Households in which a woman is the family head with children of less than 5 yrs	1%	2%	2%	129 families

Note: Calculated as a percentage of the total number of families

6.6 Percentage female-headed Households and with Children of less than 5 years old, by Commune, in 2008



Note: Calculated as a percentage of the total number of families in each commune
HH: Headed Household

7 Indigenous People in the District

7.1 Ethnic Minorities in the District over 3 years

Race of indigenous	2006		2007		2008	
	# families	# population	# families	# population	# families	# population
Phnong	0 families	0 person(s)	2 families	15 person(s)	0 families	0 person(s)
Kouy	0 families	0 person(s)	0 families	0 person(s)	0 families	0 person(s)
Stieng	0 families	0 person(s)	1 families	4 person(s)	0 families	0 person(s)
Mil	0 families	0 person(s)	0 families	0 person(s)	0 families	0 person(s)
Kroal	0 families	0 person(s)	0 families	0 person(s)	0 families	0 person(s)
Thmorn	0 families	0 person(s)	0 families	0 person(s)	0 families	0 person(s)
Khaonh	0 families	0 person(s)	0 families	0 person(s)	0 families	0 person(s)
Tompouonn	0 families	0 person(s)	0 families	0 person(s)	0 families	0 person(s)
Charay	0 families	0 person(s)	0 families	0 person(s)	0 families	0 person(s)
Kroeung	0 families	0 person(s)	0 families	0 person(s)	0 families	0 person(s)
Kavet	0 families	0 person(s)	0 families	0 person(s)	0 families	0 person(s)
Saouch	0 families	0 person(s)	0 families	0 person(s)	0 families	0 person(s)
Lun	0 families	0 person(s)	0 families	0 person(s)	0 families	0 person(s)
Kachak	0 families	0 person(s)	0 families	0 person(s)	0 families	0 person(s)
Praov	0 families	0 person(s)	0 families	0 person(s)	0 families	0 person(s)
Others	0 families	0 person(s)	0 families	0 person(s)	0 families	0 person(s)
Total	0 families	0 person(s)	3 families	4 person(s)	0 families	0 person(s)

Note: "Others" refer to other ethnic groups which are not listed.

7.2 Other Minorities in the District over 3 years

Minority	2006		2007		2008	
	# families	# population	# families	# population	# families	# population
Khmer Islamic	92 families	455 person(s)	109 families	540 person(s)	94 families	591 person(s)
Vietnamese	13 families	39 person(s)	13 families	46 person(s)	8 families	39 person(s)
Laos	0 families	0 person(s)	0 families	0 person(s)	1 families	3 person(s)

Note: Number of indigenous and minority population are additional data, so some village may not recorded.

SECTION C: PLANS AND PROJECTS

8 Priorities and Plans

8.1 Priorities of Commune Councils for 2009 in the District by Sector

The District Priority Activity Matrix (DPAM) data are taken from the CDPD. The DPAM is used for the District Integration Workshop (DIW), to show what kind of projects the commune has proposed in their Commune Investment Plan (CIP) for 2009. Donors, departments and other agencies then consider which projects they want to support and which projects they are not interested in. This results in Temporary Agreements between the Commune Council and the Supporter (NGO, Department, private donor, etc), as shown in table 8.2

No.	Project Name	Pailin	Ou Ta Vau	Tuol Lvea	Bar Yakha	Req.Project
		240101	240102	240103	240104	Total
Economic						
1	Mixed farming system training		14 training	11 training		2
2	Mushroom growing training				2 training	1
3	Hybrid technique training		14 training			1
4	Animal vaccination request				14 time	1
5	Village veterinary training	2 training			7 training	2
6	Animal raising training				2 training	1
7	Fruit trees seedling request				1500 Tree	1
8	Calf for raising request	100 Head	1400 Head	100 Head	200 Head	4
9	Sow for raising request	20 Head	1400 Head	100 Head	200 Head	4
10	Vegetable seeds request	2000 T	14 T	200 T		3
11	Chicken request			1000 Head	200 Head	2
12	Vegetable seed and farming tools request		150 Kg		200 Kg	2
13	Family fish pond construction		108 Pond		70 Pond	2
14	Earth road repair/construction			6 km		1
15	Laterite road repair/construction			4 km		1
16	Culvert construct across road	69 place		11 place		2
17			45 km		7 km	2
18		2 km	4 km			2
19		5 place	10 place		1 place	3
20		4 km				1
21		41 km				1
22			6 place			1
23	Cash credit	11 village	7 village	11 village	7 village	4
24	Market place creation/construction		1 place			1
25	Electricity supply	9 village			7 village	2

District Data Book 2009: Development Plans and Projects

No.	Project Name	Pailin	Ou Ta Vau	Tuol Lvea	Bar Yakha	Req.Project
		240101	240102	240103	240104	Total
Social						
1	Reproductive health awareness education		11 time	11 time		2
2	HIV/AIDS awareness education		11 time	11 time		2
3	Health/hygiene education for local people	2 time		11 time		2
4	Food safety and hygiene education				14 Time	1
5	Women and children health care education		14 time			1
6	Children immunization provision	5 time	11 time	11 time		3
7	Antenatal vaccination provision				4 time	1
8	TBA training		14 person			1
9	Mosquito nets distribution/treatment	1025 mosqui- net	1320 mosqui- net	1172 mosqui- net		3
10	Mosquito larvae removal treatment		1500 package			1
11	Disease treatment without service charge	12 Month	12 Month	12 Month		3
12	Health center drug supply				14 bottle	1
13	Latrine construction	50 toilet	1809 toilet	100 toilet	300 toilet	4
14					1 place	1
15			2 building			1
16		1845 Container	2114 Container		500 Container	3
17					7 place	1
18		48 well	41 well	40 well	40 well	4
19	Literacy teacher support		14 person			1
20			3 place			1
21	Kindergarten school construction/repair		4 building		7 building	2
22	Motivating pupil's parents for school enrollment			2 time		1
23	Scholarship provision to poor pupils		150 person	100 person	70 person	3
24	Khmer culture awareness education	5 room				1
25	National heritage protection committee formation		11 village			1
26	Elderly people support				40 person	1
NREM						
1	Environmental awareness and law education		14 time			1
2	Organizing environment day	2 training				1

District Data Book 2009: Development Plans and Projects

No.	Project Name	Pailin	Ou Ta Vau	Tuol Lvea	Bar Yakha	Req.Project
		240101	240102	240103	240104	Total
3	NREM education campaign		2 training			1
4	Organizing tree planting day	5000 Tree	1500 Tree	500 Tree	1500 Tree	4
5	Illegal fishing prevention		2 time		14 time	2
6	Public rubbish bin sitting			2 time		1
7	Waste management education				1 place	1
8		4 place				1
Administration and Security						
1	Civil registration encouragement			2 time		1
2	Major equipment to support commune administration		2 building			1
3	People guard activities formation/strengthening		12 Month			1
4	Drug and related law education			2 time		1
5	Gambling control/elimination activation	12 time	12 time	2 time	14 time	4
6	Stealing elimination activation	12 time	12 time		14 time	3
7	Drug business/use prevention	12 time			14 time	2
8	Traffic accident prevention		14 time			1
9	Demining project	500 ha	692 ha	13 ha		3
Gender						
1	Gender mainstreaming concept training	2 training		2 training		2
2	Women role in development strengthening/dissemination	4 training				1
3	Women capacity building for social participation		1 training			1
4	Tailor skill training			1 training		1
5	Weaving skill training/weaving craft creation			1 training		1
6	Lady makeup/hair dressing skill training	2 training		1 training	1 training	3
7	Law against domestic violence dissemination	12 training	1 training	2 training		3
8	Law against trafficking dissemination			2 training		1
9	Trafficking of women/children control activity strengthening		1 training			1

Source: CDPD – District Priority Matrix

8.2 Temporary Agreements by Commune, for 2009²

At the District Integration Workshop (DIW) the Supporters (donors, agencies, private donors, NGOs, etc.) identify which projects/activities they would like to support or they put forward their own projects to be implemented in a particular commune. Once there is agreement between Commune Councils and Supporters on specific projects a **Temporary Agreement** is signed by the commune and the Supporter to show their mutual commitment to the identified projects/activities.

It is important to keep in mind that such Temporary Agreements do not necessarily result in implementation.

8.2.1 Temporary Agreements for 2009 as per DIW 2008 for Commune: Pailin

Commune GIS	Commune	Temporary Agreements				Supporter	Funding Source	Listed in CIP before DIW
		Project Name	Quantity	Unit	Est.Cost (K.Riels)			
240101	Pailin		1	day	400	Department of of Religions and Cults		<input type="checkbox"/>
Economic								
240101	Pailin		1	km	0	Department of Rural Development		<input type="checkbox"/>
Social								
240101	Pailin	Health/hygiene education for local people	24	time	1000	Cambodian Women for Peace and Development		<input type="checkbox"/>
240101	Pailin		100	Copies	80	Buddhist For Development		<input type="checkbox"/>
240101	Pailin		12	time	1000	Cambodian Women for Peace and Development		<input type="checkbox"/>
240101	Pailin		2	Time	2000	Cambodian Women for Peace and Development		<input type="checkbox"/>
240101	Pailin		3	well	264	Department of Rural Development	PIF	<input type="checkbox"/>
240101	Pailin		2	day	400	Department of of Religions and Cults		<input type="checkbox"/>
240101	Pailin		10	day	320	Department of of Religions and Cults		<input type="checkbox"/>
240101	Pailin	Latrine construction	15	toilet	2800	Department of Rural Development	PIF	✓
240101	Pailin		23	person	11040	Buddhist For Development		<input type="checkbox"/>

² Not all the data from the CDPD has been translated to English, this has resulted in some cells in the TA tables being blank.

District Data Book 2009: Development Plans and Projects

Commune GIS	Commune	Temporary Agreements				Supporter	Funding Source	Listed in CIP befor DIW
		Project Name	Quantity	Unit	Est.Cost (K.Riels)			
Administration and Security								
240101	Pailin		11	village	1000	Ministry of Justice	PIF	<input type="checkbox"/>
240101	Pailin		0	ha	0	Cambodian Mine Action Center		<input type="checkbox"/>
240101	Pailin	Demining project	4	Course/year	0	Cambodian Mine Action Center		<input type="checkbox"/>
240101	Pailin	Demining project	3	ha	0	Cambodian Mine Action Center		<input type="checkbox"/>
240101	Pailin		11	village	3120	Buddhist For Development		<input type="checkbox"/>
Gender								
240101	Pailin	Law against domestic violence dissemination	1	training	156	Department of Women	PIF	✓
240101	Pailin	Gender mainstreaming concept training	1	training	171	Department of Women	PIF	✓
240101	Pailin		1	day	388	Department of Women	PIF	<input type="checkbox"/>
240101	Pailin		5	day	136	Department of Women	PIF	<input type="checkbox"/>
240101	Pailin		4	time	163	Department of Women	PIF	<input type="checkbox"/>
240101	Pailin		1	day	388	Department of Women	PIF	<input type="checkbox"/>
240101	Pailin	Law against domestic violence dissemination	3	case	204	Department of Women	PIF	✓
240101	Pailin	Lady makeup/hair dressing skill training	1	training	1000	Department of Women		✓
240101	Pailin		1	training	1000	Department of Women	PIF	<input type="checkbox"/>

8.2.2 Temporary Agreements for 2009 as per DIW 2008 for Commune: Ou Ta Vau

Commune GIS	Commune	Temporary Agreements				Supporter	Funding Source	Listed in CIP before DIW
		Project Name	Quantity	Unit	Est.Cost (K.Riels)			
Economic								
240102	Ou Ta Vau	ss	3	day	1800	Department of Agriculture Forestry and Fisheries		<input type="checkbox"/>
240102	Ou Ta	Mixed farming system training	1	training	3600	Department of Labor and		✓

District Data Book 2009: Development Plans and Projects

Commune GIS	Commune	Temporary Agreements				Supporter	Funding Source	Listed in CIP before DIW
		Project Name	Quantity	Unit	Est.Cost (K.Riels)			
	Vau					Vocational Training		
240102	Ou Ta Vau		1	day	726	Department of Agriculture Forestry and Fisheries		<input type="checkbox"/>
240102	Ou Ta Vau		1	day	544	Department of Agriculture Forestry and Fisheries		<input type="checkbox"/>
240102	Ou Ta Vau		1	Course/year	3600	Department of Labor and Vocational Training		<input type="checkbox"/>
240102	Ou Ta Vau	Mixed farming system training	4	day	1504	Department of Agriculture Forestry and Fisheries		<input type="checkbox"/>
240102	Ou Ta Vau		5	m2	2000	Department of Tourism	PIF	<input type="checkbox"/>
240102	Ou Ta Vau		6	demo	1252	Department of Agriculture Forestry and Fisheries		<input type="checkbox"/>
240102	Ou Ta Vau		3	day	872	Department of Agriculture Forestry and Fisheries		<input type="checkbox"/>
240102	Ou Ta Vau		150	Head	1240	Department of Tourism	PIF	<input type="checkbox"/>
240102	Ou Ta Vau		1	Course/year	1368	Department of Tourism	PIF	<input type="checkbox"/>
240102	Ou Ta Vau		1	demo	684	Department of Agriculture Forestry and Fisheries		<input type="checkbox"/>
Social								
240102	Ou Ta Vau		1	Team	800	Battambang Women's AIDS Project		<input type="checkbox"/>
240102	Ou Ta Vau		44	case	720	Battambang Women's AIDS Project		<input type="checkbox"/>
240102	Ou Ta Vau		1	Course/year	8000	Department of Labor and Vocational Training		<input type="checkbox"/>
240102	Ou Ta Vau		1	Course/year	8000	Department of Labor and Vocational Training		<input type="checkbox"/>
240102	Ou Ta Vau		1	Course/year	8000	Department of Labor and Vocational Training		<input type="checkbox"/>
240102	Ou Ta Vau		1	Course/year	8000	Department of Labor and Vocational Training	PIF	<input type="checkbox"/>

District Data Book 2009: Development Plans and Projects

Commune GIS	Commune	Temporary Agreements				Supporter	Funding Source	Listed in CIP befor DIW
		Project Name	Quantity	Unit	Est.Cost (K.Riels)			
240102	Ou Ta Vau		1	day	200	Department of of Religions and Cults		<input type="checkbox"/>
240102	Ou Ta Vau		240	case	2800	Battambang Women's AIDS Project		<input type="checkbox"/>
240102	Ou Ta Vau		1	day	200	Department of of Religions and Cults		<input type="checkbox"/>
240102	Ou Ta Vau		3	family	480	Battambang Women's AIDS Project		<input type="checkbox"/>
240102	Ou Ta Vau		9	person	4320	Buddhist For Development		<input type="checkbox"/>
240102	Ou Ta Vau		4	well	352	Department of Rural Development	PIF	<input type="checkbox"/>
240102	Ou Ta Vau	Latrine construction	15	toilet	2800	Department of Rural Development		✓
240102	Ou Ta Vau		5	day	160	Department of of Religions and Cults		<input type="checkbox"/>
240102	Ou Ta Vau		30	family	480	Battambang Women's AIDS Project		<input type="checkbox"/>
240102	Ou Ta Vau		1	training	8000	Department of Labor and Vocational Training		<input type="checkbox"/>
240102	Ou Ta Vau		12	time	0	Battambang Women's AIDS Project		<input type="checkbox"/>
240102	Ou Ta Vau		20	case	140	Battambang Women's AIDS Project		<input type="checkbox"/>
240102	Ou Ta Vau		12	Time	240	Battambang Women's AIDS Project		<input type="checkbox"/>
240102	Ou Ta Vau		15	family	0	Battambang Women's AIDS Project		<input type="checkbox"/>
240102	Ou Ta Vau		4	Team	320	Battambang Women's AIDS Project		<input type="checkbox"/>
240102	Ou Ta Vau		1	Time	320	Battambang Women's AIDS Project		<input type="checkbox"/>
240102	Ou Ta Vau		1	Time	200	Battambang Women's AIDS Project		<input type="checkbox"/>

District Data Book 2009: Development Plans and Projects

Commune GIS	Commune	Temporary Agreements				Supporter	Funding Source	Listed in CIP before DIW
		Project Name	Quantity	Unit	Est.Cost (K.Riels)			
240102	Ou Ta Vau		360	Time	0	Battambang Women's AIDS Project		<input type="checkbox"/>
240102	Ou Ta Vau		1	building	96	Battambang Women's AIDS Project		<input type="checkbox"/>
240102	Ou Ta Vau		240	Time	4320	Battambang Women's AIDS Project		<input type="checkbox"/>
240102	Ou Ta Vau		240	Time	160	Battambang Women's AIDS Project		<input type="checkbox"/>
240102	Ou Ta Vau		360	Time	0	Battambang Women's AIDS Project		<input type="checkbox"/>
240102	Ou Ta Vau		5	family	0	Battambang Women's AIDS Project		<input type="checkbox"/>
240102	Ou Ta Vau		1	Time	160	Battambang Women's AIDS Project		<input type="checkbox"/>
Administration and Security								
240102	Ou Ta Vau	Demining project	15	ha	0	Cambodian Mine Action Center		<input type="checkbox"/>
240102	Ou Ta Vau		5	ha	0	Cambodian Mine Action Center		<input type="checkbox"/>
240102	Ou Ta Vau		0	ha	0	Cambodian Mine Action Center		<input type="checkbox"/>
240102	Ou Ta Vau		100	Copies	80	Buddhist For Development		<input type="checkbox"/>
240102	Ou Ta Vau		11	village	3120	Buddhist For Development		<input type="checkbox"/>
240102	Ou Ta Vau	Demining project	5	ha	0	Cambodian Mine Action Center		✓
240102	Ou Ta Vau		0	ha	0	Cambodian Mine Action Center		<input type="checkbox"/>
240102	Ou Ta Vau		1	time	360	Department of Labor and Vocational Training	PIF	<input type="checkbox"/>
240102	Ou Ta Vau		1	Course/year	120	Department of Labor and Vocational Training		<input type="checkbox"/>
240102	Ou Ta		11	village	1000	Ministry of Justice	PIF	<input type="checkbox"/>

District Data Book 2009: Development Plans and Projects

Commune GIS	Commune	Temporary Agreements				Supporter	Funding Source	Listed in CIP before DIW
		Project Name	Quantity	Unit	Est.Cost (K.Riels)			
	Vau							
Gender								
240102	Ou Ta Vau	Law against domestic violence dissemination	1	training	156	Department of Women	PIF	✓
240102	Ou Ta Vau	Law against domestic violence dissemination	3	case	204	Department of Women	PIF	✓
240102	Ou Ta Vau		5	day	136	Department of Women	PIF	□
240102	Ou Ta Vau		4	time	163	Department of Women	PIF	□
240102	Ou Ta Vau		1	Course/year	1000	Department of Women	PIF	□
240102	Ou Ta Vau		1	day	388	Department of Women	PIF	□
240102	Ou Ta Vau		1	Course/year	171	Department of Women	PIF	□
240102	Ou Ta Vau	Lady makeup/hair dressing skill training	1	Course/year	1000	Department of Women		□
240102	Ou Ta Vau		1	day	480	Department of Agriculture Forestry and Fisheries		□
240102	Ou Ta Vau		1	well	151	Department of Women	PIF	□

8.2.3 Temporary Agreements for 2009 as per DIW 2008 for Commune: Tuol Lvea

Commune GIS	Commune	Temporary Agreements				Supporter	Funding Source	Listed in CIP befor DIW
		Project Name	Quantity	Unit	Est.Cost (K.Riels)			
Economic								
240103	Tuol Lvea	Sow for raising request	3	Head	480	Battambang Women's AIDS Project		✓
240103	Tuol Lvea	Mixed farming system training	4	day	1504	Department of Agriculture Forestry and Fisheries		☐

District Data Book 2009: Development Plans and Projects

Commune GIS	Commune	Temporary Agreements				Supporter	Funding Source	Listed in CIP before DIW
		Project Name	Quantity	Unit	Est.Cost (K.Riels)			
240103	Tuol Lvea		1	day	634	Department of Agriculture Forestry and Fisheries		<input type="checkbox"/>
240103	Tuol Lvea		1	day	726	Department of Agriculture Forestry and Fisheries		<input type="checkbox"/>
240103	Tuol Lvea		3	day	727	Department of Agriculture Forestry and Fisheries		<input type="checkbox"/>
240103	Tuol Lvea	ss	3	day	1500	Department of Agriculture Forestry and Fisheries		<input type="checkbox"/>
240103	Tuol Lvea	ly	1	demo	228	Department of Agriculture Forestry and Fisheries		<input type="checkbox"/>
240103	Tuol Lvea	Mixed farming system training	3	demo	1104	Department of Agriculture Forestry and Fisheries		✓
240103	Tuol Lvea		3	day	873	Department of Agriculture Forestry and Fisheries		<input type="checkbox"/>
240103	Tuol Lvea	Mixed farming system training	1	training	3600	Department of Labor and Vocational Training		✓
240103	Tuol Lvea		1	training	3600	Department of Labor and Vocational Training		<input type="checkbox"/>
240103	Tuol Lvea	Training on mushroom growing techniques	1	training	3600	Department of Labor and Vocational Training		<input type="checkbox"/>
240103	Tuol Lvea		3	demo	628	Department of Agriculture Forestry and Fisheries		<input type="checkbox"/>
Social								
240103	Tuol Lvea	Latrine construction	15	toilet	2800	Department of Rural Development	PIF	✓
240103	Tuol Lvea		200	case	600	Battambang Women's AIDS Project		<input type="checkbox"/>
240103	Tuol Lvea		260	Time	0	Battambang Women's AIDS Project		<input type="checkbox"/>
240103	Tuol Lvea		1	Time	160	Battambang Women's AIDS Project		<input type="checkbox"/>
240103	Tuol Lvea	Scholarship provision to poor pupils	19	person	9120	Buddhist For Development		✓
240103	Tuol Lvea	HIV/AIDS awareness education	240	time	300	Battambang Women's AIDS Project		✓

District Data Book 2009: Development Plans and Projects

Commune GIS	Commune	Temporary Agreements				Supporter	Funding Source	Listed in CIP before DIW
		Project Name	Quantity	Unit	Est.Cost (K.Riels)			
240103	Tuol Lvea		2	Time	2000	Cambodian Women for Peace and Development		<input type="checkbox"/>
240103	Tuol Lvea	HIV/AIDS awareness education	12	time	1000	Cambodian Women for Peace and Development		✓
240103	Tuol Lvea	Health/hygiene education for local people	24	time	1000	Cambodian Women for Peace and Development		✓
240103	Tuol Lvea		40	case	120	Battambang Women's AIDS Project		<input type="checkbox"/>
240103	Tuol Lvea		5	family	200	Battambang Women's AIDS Project		<input type="checkbox"/>
240103	Tuol Lvea		20	case	35	Battambang Women's AIDS Project		<input type="checkbox"/>
240103	Tuol Lvea		1	Time	80	Battambang Women's AIDS Project		<input type="checkbox"/>
240103	Tuol Lvea		3	well	264	Department of Rural Development	PIF	✓
240103	Tuol Lvea	ss	1	Course/year	8000	Department of Labor and Vocational Training		<input type="checkbox"/>
240103	Tuol Lvea		12	Time	50	Battambang Women's AIDS Project		<input type="checkbox"/>
240103	Tuol Lvea		6	Team	120	Battambang Women's AIDS Project		<input type="checkbox"/>
240103	Tuol Lvea		1	training	8000	Department of Labor and Vocational Training		<input type="checkbox"/>
240103	Tuol Lvea		1	training	8000	Department of Labor and Vocational Training		<input type="checkbox"/>
240103	Tuol Lvea	HIV/AIDS awareness education to youth group	240	Time	0	Battambang Women's AIDS Project		<input type="checkbox"/>
240103	Tuol Lvea		1	training	8000	Department of Labor and Vocational Training		<input type="checkbox"/>
240103	Tuol Lvea		1	Team	800	Battambang Women's AIDS Project		<input type="checkbox"/>
240103	Tuol Lvea		1	training	8000	Department of Labor and Vocational Training		<input type="checkbox"/>

District Data Book 2009: Development Plans and Projects

Commune GIS	Commune	Temporary Agreements				Supporter	Funding Source	Listed in CIP before DIW
		Project Name	Quantity	Unit	Est.Cost (K.Riels)			
Administration and Security								
240103	Tuol Lvea	Drug and related law education	1	time	720	Department of Social and Veteran Affairs and Youth Rehabilitation	PIF	✓
240103	Tuol Lvea		1	time	120	Department of Labor and Vocational Training		□
240103	Tuol Lvea		1	time	360	Department of Labor and Vocational Training		□
240103	Tuol Lvea	Civil registration encouragement	160	Time	0	Battambang Women's AIDS Project		✓
240103	Tuol Lvea		100	Copies	80	Buddhist For Development		□
240103	Tuol Lvea		11	village	3120	Buddhist For Development		□
240103	Tuol Lvea		0	ha	0	Cambodian Mine Action Center		□
240103	Tuol Lvea		11	village	1000	Ministry of Justice	PIF	□
240103	Tuol Lvea	Demining project	1	ha	0	Cambodian Mine Action Center		✓
240103	Tuol Lvea	Civil registration encouragement	1	time	720	Department of Social and Veteran Affairs and Youth Rehabilitation	PIF	✓
240103	Tuol Lvea	Demining project	6	ha	0	Cambodian Mine Action Center		✓
Gender								
240103	Tuol Lvea		4	time	163	Department of Women	PIF	□
240103	Tuol Lvea	Law against trafficking dissemination	20	time	0	Battambang Women's AIDS Project		✓
240103	Tuol Lvea		1	day	388	Department of Women	PIF	□
240103	Tuol Lvea		5	day	136	Department of Women	PIF	□
240103	Tuol Lvea	Law against trafficking dissemination	1	training	151	Department of Women	PIF	✓
240103	Tuol Lvea	Law against domestic violence dissemination	1	day	156	Department of Women	PIF	✓
240103	Tuol Lvea		1	training	171	Department of Women	PIF	✓
240103	Tuol Lvea	Lady makeup/hair dressing skill training	1	training	1000	Department of Women		✓
240103	Tuol Lvea	Weaving skill training/weaving craft creation	1	training	1000	Department of Women		✓
240103	Tuol Lvea		1	day	480	Department of Agriculture		□

Commune GIS	Commune	Temporary Agreements				Supporter	Funding Source	Listed in CIP before DIW
		Project Name	Quantity	Unit	Est.Cost (K.Riels)			
						Forestry and Fisheries		
240103	Tuol Lvea	Tailor skill training	1	training	8000	Department of Labor and Vocational Training		✓
240103	Tuol Lvea	Law against domestic violence dissemination	3	case	204	Department of Women	PIF	✓

8.2.4 Temporary Agreements for 2009 as per DIW 2008 for Commune: Bar Yakha

Commune GIS	Commune	Temporary Agreements				Supporter	Funding Source	Listed in CIP before DIW
		Project Name	Quantity	Unit	Est.Cost (K.Riels)			
Economic								
240104	Bar Yakha	Animal raising training	0	training	0	Department of Agriculture Forestry and Fisheries		✓
240104	Bar Yakha	Mixed farming system training	4	day	1504	Department of Agriculture Forestry and Fisheries		□
240104	Bar Yakha		1	demo	228	Department of Agriculture Forestry and Fisheries		□
240104	Bar Yakha		1	day	726	Department of Agriculture Forestry and Fisheries		□
240104	Bar Yakha		2	demo	416	Department of Agriculture Forestry and Fisheries		□
240104	Bar Yakha		1	day	726	Department of Agriculture Forestry and Fisheries		□
240104	Bar Yakha	Mushroom growing training	1	training	3600	Department of Labor and Vocational Training		✓
240104	Bar Yakha		3	day	872	Department of Agriculture Forestry and Fisheries		□
240104	Bar Yakha		3	day	436	Department of Agriculture Forestry and Fisheries		□
240104	Bar Yakha	Animal raising training	1	training	3600	Department of Labor and Vocational Training		✓
240104	Bar Yakha	Village veterinary training	1	training	3600	Department of Labor and Vocational Training		✓

District Data Book 2009: Development Plans and Projects

Commune GIS	Commune	Temporary Agreements				Supporter	Funding Source	Listed in CIP before DIW
		Project Name	Quantity	Unit	Est.Cost (K.Riels)			
240104	Bar Yakha		1	village	16000	Buddhist For Development		<input type="checkbox"/>
240104	Bar Yakha	ss	3	day	900	Department of Agriculture Forestry and Fisheries		<input type="checkbox"/>
Social								
240104	Bar Yakha		4	Team	200	Battambang Women's AIDS Project		<input type="checkbox"/>
240104	Bar Yakha		1	Team	200	Battambang Women's AIDS Project		<input type="checkbox"/>
240104	Bar Yakha		1	Time	200	Battambang Women's AIDS Project		<input type="checkbox"/>
240104	Bar Yakha		6	family	0	Battambang Women's AIDS Project		<input type="checkbox"/>
240104	Bar Yakha		240	Time	160	Battambang Women's AIDS Project		<input type="checkbox"/>
240104	Bar Yakha		1	Time	224	Battambang Women's AIDS Project		<input type="checkbox"/>
240104	Bar Yakha		35	case	400	Battambang Women's AIDS Project		<input type="checkbox"/>
240104	Bar Yakha		240	Time	1200	Battambang Women's AIDS Project		<input type="checkbox"/>
240104	Bar Yakha		7	family	0	Battambang Women's AIDS Project		<input type="checkbox"/>
240104	Bar Yakha		1	building	96	Battambang Women's AIDS Project		<input type="checkbox"/>
240104	Bar Yakha		10	family	200	Battambang Women's AIDS Project		<input type="checkbox"/>
240104	Bar Yakha		260	Time	0	Battambang Women's AIDS Project		<input type="checkbox"/>
240104	Bar Yakha	Scholarship provision to poor pupils	15	person	7200	Buddhist For Development		✓
240104	Bar Yakha		3	well	264	Department of Rural Development	PIF	<input type="checkbox"/>
240104	Bar	Latrine construction	15	toilet	2800	Department of Rural		✓

District Data Book 2009: Development Plans and Projects

Commune GIS	Commune	Temporary Agreements				Supporter	Funding Source	Listed in CIP before DIW
		Project Name	Quantity	Unit	Est.Cost (K.Riels)			
	Yakha					Development		
240104	Bar Yakha		20	case	140	Battambang Women's AIDS Project		<input type="checkbox"/>
240104	Bar Yakha		1	Course/year	8000	Department of Labor and Vocational Training		<input type="checkbox"/>
240104	Bar Yakha	ss	1	Course/year	8000	Department of Labor and Vocational Training		<input type="checkbox"/>
240104	Bar Yakha		260	Time	0	Battambang Women's AIDS Project		<input type="checkbox"/>
240104	Bar Yakha		1	Time	160	Battambang Women's AIDS Project		<input type="checkbox"/>
240104	Bar Yakha		12	time	0	Battambang Women's AIDS Project		<input type="checkbox"/>
240104	Bar Yakha		4	family	640	Battambang Women's AIDS Project		<input type="checkbox"/>
240104	Bar Yakha		12	Time	200	Battambang Women's AIDS Project		<input type="checkbox"/>
240104	Bar Yakha		100	case	1200	Battambang Women's AIDS Project		<input type="checkbox"/>
240104	Bar Yakha		1	Course/year	8000	Department of Labor and Vocational Training		<input type="checkbox"/>
240104	Bar Yakha		1	Course/year	8000	Department of Labor and Vocational Training		<input type="checkbox"/>
240104	Bar Yakha		1	Course/year	8000	Department of Labor and Vocational Training		<input type="checkbox"/>
Administration and Security								
240104	Bar Yakha		11	village	1000	Ministry of Justice	PIF	<input type="checkbox"/>
240104	Bar Yakha		1	time	360	Department of Labor and Vocational Training	PIF	<input type="checkbox"/>
240104	Bar Yakha		7	village	3120	Buddhist For Development		<input type="checkbox"/>
240104	Bar Yakha	Demining project	2	ha	0	Cambodian Mine Action Center		<input type="checkbox"/>

District Data Book 2009: Development Plans and Projects

Commune GIS	Commune	Temporary Agreements				Supporter	Funding Source	Listed in CIP before DIW
		Project Name	Quantity	Unit	Est.Cost (K.Riels)			
240104	Bar Yakha	Demining project	47	ha	0	Cambodian Mine Action Center		<input type="checkbox"/>
240104	Bar Yakha		120	Course/year	0	Cambodian Mine Action Center		<input type="checkbox"/>
240104	Bar Yakha		0	ha	0	Cambodian Mine Action Center		<input type="checkbox"/>
240104	Bar Yakha		100	Copies	80	Buddhist For Development		<input type="checkbox"/>
Gender								
240104	Bar Yakha	Law against domestic violence dissemination	3	case	204	Department of Women	PIF	<input type="checkbox"/>
240104	Bar Yakha		1	day	480	Department of Agriculture Forestry and Fisheries		<input type="checkbox"/>
240104	Bar Yakha	Lady makeup/hair dressing skill training	1	training	1000	Department of Women		✓
240104	Bar Yakha		1	Course/year	1000	Department of Women		<input type="checkbox"/>
240104	Bar Yakha		5	day	136	Department of Women	PIF	<input type="checkbox"/>
240104	Bar Yakha		4	time	163	Department of Women	PIF	<input type="checkbox"/>
240104	Bar Yakha		1	Course/year	151	Department of Women	PIF	<input type="checkbox"/>
240104	Bar Yakha	Lady makeup/hair dressing skill training	1	training	8000	Department of Labor and Vocational Training		✓
240104	Bar Yakha	Law against domestic violence dissemination	1	day	156	Department of Women	PIF	<input type="checkbox"/>
240104	Bar Yakha		1	Course/year	171	Department of Women	PIF	<input type="checkbox"/>
240104	Bar Yakha		1	day	388	Department of Women	PIF	<input type="checkbox"/>

Source: CDPD, District Level Detail TA resulting from DIW

8.3 Outputs, estimated and actual costs of C/S Fund Projects between 2005 and 2008, by Commune

Commune	Project Type	Budget Year	Output		Quantity	Unit	Unit Cost MR	
			Description	Type			Estimate	Actual
Pailin	Rural Transport	2005	Single pipe culvert	New	2	Place	4.97	31.80
Pailin	Rural Transport	2005	Double pipe culvert	New	1	Place	6.28	31.80
Pailin	Rural Transport	2005	Laterite road	Repair	1.486	Km	20.57	31.80
Pailin	Rural Transport	2006	Single pipe culvert	Repair	1	Place	2.07	39.49
Pailin	Rural Transport	2006	Double pipe culvert	New	1	Place	5.69	39.49
Pailin	Rural Transport	2006	Single pipe culvert	New	4	Place	10.43	39.49
Pailin	Rural Transport	2006	Laterite road	Repair	2.6	Km	22.11	39.49
Pailin	Rural Transport	2007	Laterite road	Repair	4.91	Km	60.12	42.03
Pailin	Rural Transport	2007	Single pipe culvert	New	10	Place	23.89	42.03
Pailin	Rural Transport	2008	Double pipe culvert	New	1	Place	6.89	43.46
Pailin	Rural Transport	2008	Single pipe culvert	New	11	Place	36.57	43.46
Ou Ta Vau	Rural Transport	2005	Single pipe culvert	New	6	Place	12.29	31.17
Ou Ta Vau	Rural Transport	2005	Earth road	New	3.271	Km	15.18	31.17
Ou Ta Vau	Rural Transport	2005	Single pipe culvert	New	2	Place	3.85	31.17
Ou Ta Vau	Rural Transport	2006	Single pipe culvert	New	2	Place	5.39	36.02
Ou Ta Vau	Rural Transport	2006	Double pipe culvert	New	2	Place	10.15	36.02
Ou Ta Vau	Rural Transport	2006	Earth road	New	1.49	Km	11.41	36.02
Ou Ta Vau	Rural Transport	2006	Laterite road	Repair	2.083	Km	9.33	36.02
Ou Ta Vau	Rural Transport	2007	Earth road	New	2.45	Km	33.10	33.40
Ou Ta Vau	Rural Transport	2008	Earth road	New	1.905	Km	18.31	36.35
Ou Ta Vau	Rural Transport	2008	Single pipe culvert	New	5	Place	10.79	36.35
Tuol Lvea	Rural Transport	2005	Single pipe culvert	New	1	Place	1.87	14.92
Tuol Lvea	Rural Transport	2005	Single pipe culvert	New	1	Place	1.49	8.02
Tuol Lvea	Rural Transport	2005	Laterite road	Repair	2.489	Km	10.96	14.92
Tuol Lvea	Rural Transport	2005	Double pipe culvert	New	1	Place	4.16	14.92
Tuol Lvea	Rural Transport	2005	Earth road	New	1.24	Km	4.31	8.02
Tuol Lvea	Rural Transport	2006	Earth road	New	0.4	Km	4.03	30.05
Tuol Lvea	Rural Transport	2006	Laterite road	Repair	2.486	Km	19.89	30.05
Tuol Lvea	Rural Transport	2006	Single pipe culvert	New	3	Place	6.74	30.05
Tuol Lvea	Rural Transport	2007	Earth road	New	1.79	Km	13.77	30.63
Tuol Lvea	Rural Transport	2007	Laterite road	Repair	0.6	Km	6.20	30.63
Tuol Lvea	Rural Transport	2007	Single pipe culvert	New	5	Place	10.70	30.63
Tuol Lvea	Rural Transport	2008	Laterite road	Repair	0.65	Km	14.62	31.82

Commune	Project Type	Budget Year	Output		Quantity	Unit	Unit Cost MR	
			Description	Type			Estimate	Actual
Tuol Lvea	Rural Transport	2008	Laterite road	New	0.735	Km	15.64	31.82
Bar Yakha	Rural Transport	2005	Single pipe culvert	New	6	Place	12.79	20.49
Bar Yakha	Rural Transport	2005	Earth road	Repair	1.6	Km	8.98	20.49
Bar Yakha	Rural Transport	2006	Single pipe culvert	New	3	Place	7.05	28.22
Bar Yakha	Rural Transport	2006	Earth road	New	1.55	Km	12.11	28.22
Bar Yakha	Rural Transport	2006	Double pipe culvert	New	1	Place	5.60	28.22
Bar Yakha	Rural Transport	2006	Laterite road	Repair	0.55	Km	3.75	28.22
Bar Yakha	Rural Transport	2007	Earth road	New	2.59	Km	21.56	27.78
Bar Yakha	Rural Transport	2007	Single pipe culvert	New	3	Place	6.24	27.78
Bar Yakha	Rural Transport	2008	Single pipe culvert	New	6	Place	13.99	29.16
Bar Yakha	Rural Transport	2008	Earth road	New	1.478	Km	16.11	29.16

Source: PID

8.4 Total Expenditure on C/S Fund Projects by sector and commune between 2005 and 2008

Sector	Total Cost in Million Riels			
	Pailin	Ou Ta Vau	Tuol Lvea	Bar Yakha
Rural Transport	156.78	136.94	115.45	105.64

Source: PID

8.5 Actual 2009 C/S Fund projects by Commune

Commune	Project Type	Project Output		Quantity	Unit	Fund Source (Riels)		
		Description	Type			Total	C/S	Local Contribution
Sangkat Pailin	Rural Transport	Double pipe culvert 1.0m diameter	New	1	Place	52,603,600	51,603,600	1,000,000
Sangkat Pailin	Rural Transport	Double pipe culvert 1.0m diameter	New	1	Place	52,603,600	51,603,600	1,000,000
Sangkat Pailin	Rural Transport	Single pipe culvert 1.0m diameter	New	3	Place	52,603,600	51,603,600	1,000,000
Sangkat Pailin	Rural Transport	Single pipe culvert 0.8m diameter	New	3	Place	52,603,600	51,603,600	1,000,000
Sangkat Pailin	Rural Transport	Single pipe culvert 0.6m diameter	New	1	Place	52,603,600	51,603,600	1,000,000
Sangkat Pailin	Rural Transport	Single pipe culvert 0.6m diameter	New	1	Place	52,603,600	51,603,600	1,000,000
Sangkat Ou Ta Vau	Rural Transport	Laterite road	Repair	2.95	km	48,938,200	47,938,200	1,000,000
Sangkat Ou Ta Vau	Rural Transport	Single pipe culvert 0.6m diameter	New	1	Place	48,938,200	47,938,200	1,000,000
Sangkat Tuol Lvea	Rural Transport	Laterite road	Repair	1.798	km	40,636,400	40,036,400	600,000
Sangkat Tuol Lvea	Rural Transport	Single pipe culvert 1.0m diameter	New	1	Place	40,636,400	40,036,400	600,000
Sangkat Tuol Lvea	Rural Transport	Single pipe culvert 0.6m diameter	New	1	Place	40,636,400	40,036,400	600,000
Sangkat Bar Yakha	Rural Transport	Earth road	New	1.52	km	38,609,500	37,460,300	1,149,200
Sangkat Bar Yakha	Rural Transport	Double pipe culvert 1.0m diameter	New	1	Place	38,609,500	37,460,300	1,149,200
Sangkat Bar Yakha	Rural Transport	Single pipe culvert 1.0m diameter	New	1	Place	38,609,500	37,460,300	1,149,200
Sangkat Bar Yakha	Rural Transport	Single pipe culvert 0.8m diameter	New	1	Place	38,609,500	37,460,300	1,149,200
Sangkat Bar Yakha	Rural Transport	Single pipe culvert 0.6m diameter	New	2	Place	38,609,500	37,460,300	1,149,200

Source: PID

9 District level Projects from 2006 to 2009

District Initiative Projects (DIPs) are funded by Danida, DFID and PSDD (UNDP, DFID and SIDA).

Funding for 2006-2008

Between 2006 and 2008 there were 14 provinces funded by PSDD and 10 by Danida and DFID. The list of provinces and who funded these is below

Danida and DFID funded DIPs:

Kampong Cham	Kampong Speu	Koh Kong	Kratie	Monduliri
Pursat	Ratanakiri	Siem Reap	Sihanoukville	Kep

PSDD funded DIPs:

Banteay Meanchey	Battambang	Kampong Chhnang	Kandal	Phnom Penh
Prey Veng	Svay Rieng	Takeo	Kampong Thom	Preah Vihear
Stung Treng	Kampot	Oddar Meanchey	Pailin	

Funding for 2009

In 2009 there was a change to the number of provinces funded by the two streams. Danida and DFID were still funding the same 10 provinces they had been funding the previous three years, but two more provinces were added *Kampong Thom and Kampot*. Now PSDD funds 12 provinces and Danida and DFID fund 12.

9.1 District Initiative Infrastructure Projects from 2006 to 2009

9.1.1 District Initiative Infrastructure Projects for 2006 to 2008

Date	Project Name	Implementing Agencies	Budget (US\$)	Project Output & Capacity	Number of Beneficiaries
2007	Construct culverts 8 places	Inter-commune	5,682.00		
2008	Earth Road Construction	Inter-commune	8,437.00	1180 m	20399(F:10040)

9.1.2 District Initiative Infrastructure Projects in 2009

No District Initiative Infrastructure Projects have been implemented in this district for 2009

9.2 District Initiative Service Projects from 2006 to 2009

9.2.1 District Initiative Service Projects for 2006 to 2008

Date	Project Names	Implementing agencies	Budget (US\$)	Project Output & Capacity	Number of Beneficiaries
2007	Forest community formation and Support	District Forest Admin- Office	1,000.00		
2007	Nursery Station construction	Disrict Forest Admin- Office	528.00		
2007	Monthly Provide food anf materials for pre-school children	District Education office	600.00		
2007	Monthly Suppementary for 4 teachers in Otavoa and Soun Ampov Child centers	District Education office	180.00		
2007	Materials for children in O'Tavao and Soun Ampov Child centers	District Education office	265.00		
2007	Materials for children in 6 pre-schools	District Education office	780.00		
2007	Education on traffic law and drugs used in OTaPuk secondary school	District office of sociaty	681.00		
2007	Traffic Law awareness education at Otapuk Secondary school	District office of sociaty	301.50		
2007	2 Security guards for 3 months in O Tapuk Secondary school	District office of sociaty	229.00		
2007	Land Law training to CCs and Village chiefs	District LUM office	504.50		
2007	Training on Gender mainstreaming concept and R&R women	Disrtict Gender Office	549.00		
2007	Materials for supporting to 6 District and Sangkat Gender focal person	Disrtict Gender Office	51.00		
2008	Provide materials and Equipment to the new Pre-school in Toul Lovea	District Education	500.00		
2008	Provide foods to Child Centers in O'tavoa and Pailin	District Education	600.00		
2008	Dissemination on Drug Use to Schools children	District Education	613.00		
2008	Traffic Law education at School	District Education	600.00		
2008	Sangkat Administration training	District Admin-	500.00		

9.2.2 District Initiative Service Projects in 2009

Project Name	Sector	Implementing Agency	Budget	Project outputs/ capacities	No. of Beneficiaries		Progress	Remarks on Issues of Progress
					Total	Female		
Foods supplementary and student kids to 3 Pre-schools provision	EDU	Education Office	\$1,164.00	3 Pre-schools	200	100	100%	Report in the process
Law on Suppression of Trafficking of Women and Children dissemination to 4 communes	GEN	WA Office	\$670.00	4 sessions	200	100	50%	On-going
Law on suppression of Drug abuse dissemination	ADM	Police Inspection	\$680.00	4 sessions	140	80	75%	On-going
Forum to Female CCs, women in charge of W&C and female village unit leaders	GEN	WA Office	\$459.00	1 forum	50	50	100%	Report in the process

9.3 Inter Commune Council Projects in 2008 and 2009

9.3.1 ICC Projects in 2008

No ICC projects in this district at this time

9.3.2 ICC Projects in 2009

No ICC projects in this district at this time

Source: ICC project, Ministry of Interior (DoLA), -UNDP project for Local Governance – DDLG

9.4 Other Projects in 2008 and 2009

9.4.1 RPRP

There are no RPRP projects being implemented in this district or province at this time. The RPRP is only being implemented in Svay Rieng and Prey Veng

9.4.1.1 RPRP Projects from 2006 to 2008

No RPRP projects in this district at this time

9.4.1.2 RPRP Projects in 2009

No RPRP projects in this district at this time

9.4.2 Seth Korma

9.4.2.1 Seth Koma 2007

There are no Seth Korma projects being implemented in this district or province at this time.

Source: UNICEF

9.4.2.2 Seth Koma 2008

There are no Seth Korma projects being implemented in this district or province at this time.

Source: UNICEF

9.4.2.3 Seth Koma 2009

There are no Seth Korma projects being implemented in this district or province at this time.

Source: UNICEF

SECTION D: SERVICES AND ORGANIZATIONS

10 Infrastructure

10.1 Length of and Expenditure on Roads in 2008, by District

Roads	PLN	Pailin	Salakrau
Length of paved road in the district in Km	6	6	0
Length of unpaved roads in the district in Km	13	7	6
Amount spent on construction of roads in 2008 (\$)	24,298	24,298	0
Amount spent on repair and rehabilitation of roads in 2008 (\$)	607,994	564,000	43,994

Note 1: Please note that these data are not necessarily complete or correct. The data are derived from government agencies at provincial and district level which used different recording systems, did not always have complete data or were, sometimes, less than willing to share their data.

Note 2: Please be aware that these data are incomplete due to the fact that the amounts for the construction, repair and rehabilitation recorded reflect only funds provided by the government, not the contributions by any other parties.

10.2 Scale of and Expenditure on Irrigation in 2008, by District

Irrigation	PLN	Pailin	Salakrau
Number of irrigation schemes operating in 2008	1	0	1
Total nr of hectares under irrigation in dry season 2008	150	0	150
Total funds spent in 2008 on construction of irrigation systems (\$)	48,820	0	48,820
Total funds spent in 2008 on rehabilitation/repair of irrigation systems (\$)	-	0	0
Total funds spent in 2008 on operation and maintenance (\$)	1,250	0	1,250

Note 1: Please note that these data are not necessarily complete or correct. The data are derived from government agencies at provincial and district level which used different recording systems, did not always have complete data or were, sometimes, less than willing to share their data.

Note 2: Please be aware that the data above are incomplete as these only reflect funds provided by the government, not the contributions by farmers or other parties.

10.3 Power Supply in 2008, by District

Electricity	PLN	Pailin	Salakrau
Total number of electricity connections to households	3,927	2,790	1,137
Total number of electricity connections to agencies, companies, organizations	4	n/a	4
Total volume in KWh of electricity consumed last in 2008	9,336,277	2,249,218	7,087,059
Total amount collected from users for consumed electricity (\$)	2,118,107	477,959	1,640,148
Per capita electricity consumption in 2008 in Kwh	633	n/a	n/a

Note 1: Please note that these data are not necessarily complete or correct. The data are derived from government agencies at provincial and district level which used different recording systems, did not always have complete data or were, sometimes, less than willing to share their data.

Note 2: These data only record electricity provided by electricity companies and does not include homes powered by generators or batteries (for this information see Section B: General Profile, Part 1: General Information; table 1.3.1 and chart 1.3.4).

Note 3: In most provinces electricity is only provided through town-based networks

Note 4: Per capita consumption is calculated by dividing the total volume of electricity produced in 2008 by the number of people living in each district as per the 2008 census (for the provincial data it is calculated against the number of people living in the province)

11 Health Facilities

Please note that the Operational District (health) boundaries are different to the administrative district boundaries. Therefore the data provided here shows the facilities, staff, NGOs etc in each Operational District within the province NOT the administrative district.

Acronyms

Com Cov	Commune Covered	MW2	Secondary Midwives
CPA	Complementary Package of Activities	NU1	Primary Nurse
Dr	Doctor	NU2	Secondary Nurse
FDH	Former District Hospital	OD	Operational District
HC	Health Center	Others	Other Staff
HC (NB)	Health Center no building	PHD	Provincial Health Department
HP	Health Post	Pop 04-05	Population Covered 2004 or 2005
MA	Medical Assistant	RH	Referral Hospital
MPA	Minimum Package of Activities	Vil Cov	Village Covered
MW1	Primary Midwives	VIL-HC	Distance from Village to Health Center

11.1 Health Facilities in the Province, by Operational District

Pailin	OD	RH	HC	HP
Pailin	1	1	5	
Total	1	1	5	0

11.2 Health Facilities and Staff in the province, by Operational District

This table shows health facilities, staff and coverage of health facilities in each operational district.

No	Facility Name	Type	Class	Dr	Ma	Nu2	Nu1	Mw2	Mw1	Others	Com Cov	Vil Cov	Pop. 04-05
Pailin Ville													
1	Ou Chra	HC	MPA	0	3	2	3	0	0	1	2	18	7,049
2	Phnum Preal	HC	None MPA	0	0	0	0	0	0	5	2	14	7,187
3	Phsar Prum	HC(NB)	None	0	0	0	0	0	0	4	1	6	6,074
4	Phum Spung	HC	MPA	0	0	1	6	0	0	2	4	29	15,008
Total:				0	3	3	9	0	0	12	9	67	35,318

Source: MEDiCAM – Infrastructure - (http://www.medicam-cambodia.org/hsi/health_system/srch/index.asp?cboLcn=6&cmdSearch=Search&cboCHName=&cboType=)

11.3 Deliveries in 2007 in the Province, by Operational District

OD	Deliveries	Deliveries at home		Deliveries	Total deliveries	Total deliveries
	at HC	By Health Staff	ByTBAs	at RH	by Health Staff	by health staff and TBAs
Pailan	297	91	404	289	677	1081
<i>Sub-total</i>	<i>297</i>	<i>91</i>	<i>404</i>	<i>289</i>	<i>677</i>	<i>1081</i>

Source: MoH, Annual Statistics 2007

12 Education³

12.1 Schools, Classes, Students, Staff, for all levels, for 2007/2008 by District

District	Number of Schools	Disadv. Schools	Number of Classes	Classes in Pagoda	Enrollment		Repeaters		Teaching Staff		Non-Teaching Staff		Total Staff	
					Total	Girl	Total	Girl	Total	Female	Total	Female	Total	Female
Pailin	35	1	225	0	8,731	4,017	569	200	214	89	48	14	262	103
Sala Krao	29	0	172	0	6,554	3,073	897	367	105	29	18	1	123	30
Whole Province	64	1	397	0	15,285	7,090	1,466	567	319	118	66	15	385	133
- Urban Area	64	1	397	0	15,285	7,090	1,466	567	319	118	66	15	385	133

12.2 Characteristics of Schools and School Principals for 2007/2008 by Commune

Commune	Number of Schools				2 - Shift	Floating	Schools	Attached	Schools Without			Characteristics of School Principals (Incharge)			
	Pre-Sch	Primary	College	Lycee	Schools	Schools	in Pagoda	Pre-Sch	Water Sup.	Latrine		Avg. Age	Avg. Service	U.Sec+ Ed.	Female
Pailin	3	6	1	0	5	0	2	3	7	4		36.7	8.6	1	5
Ou Ta Vau	2	9	1	0	9	0	0	2	9	6		32.8	7.8	5	3
Tuol Lvea	4	4	0	1	4	0	0	4	3	2		32.3	9.2	0	3
Bar Yakha	1	2	1	0	3	0	0	1	2	1		30.9	8.3	1	0

³ All the data for section 12 comes from the Ministry of Education, Youth and Sport (MoEYS)

12.3 Enrolment by Level of Education, 2006/2007 by Commune

Commune	School	Pre school		Primary School		Lower Secondary School		Upper Secondary School		Enrolment	
		Total	Female	Total	Female	Total	Female	Total	Female	Total	Female
Pailin	7	70	40	2186	1022	221	102	0	0	2477	1164
Ou Ta Vau	10	80	38	1543	729	0	0	0	0	1623	767
Tuol Lvea	8	117	61	1667	766	1202	553	493	192	3479	1572
Bar Yakha	4	30	10	589	293	354	173	0	0	973	476

12.4 Enrolment by Level of Education, 2007/2008 by Commune

Commune	School	Pre school		Primary School		Lower Secondary School		Upper Secondary School		Enrolment	
		Total	Female	Total	Female	Total	Female	Total	Female	Total	Female
Pailin	10	106	67	2067	977	452	215	0	0	2625	1259
Ou Ta Vau	12	68	23	1663	729	16	4	0	0	1747	756
Tuol Lvea	9	108	54	1475	675	1187	578	658	246	3428	1553
Bar Yakha	4	20	6	499	242	412	201	0	0	931	449

12.5 Aspects of Enrolment for 2007/2008 by Commune

Commune	% Repeaters (Total)			% Over-age Enrollment (Total)			% Repeaters (Girl)			% Over-age Enrollment (Girl)		
	Primary	L.Sec.	U.Sec.	Primary	L.Sec.	U.Sec.	Primary	L.Sec.	U.Sec.	Primary	L.Sec.	U.Sec.
Pailin	8.5	1.8	0.0	36.3	56.4	0.0	6.4	0.9	0.0	34.2	49.3	0.0
Ou Ta Vau	8.4	0.0	0.0	34.3	62.5	0.0	7.5	0.0	0.0	29.6	75.0	0.0
Tuol Lvea	9.8	1.7	2.4	36.1	53.4	54.6	8.4	0.5	0.0	34.4	47.2	41.9
Bar Yakha	12.4	1.2	0.0	39.9	56.8	0.0	7.9	0.5	0.0	40.5	49.3	0.0

12.6 School Buildings for all schools in the District for 2007/2008, by Commune

Commune	Total Number of		Concrete/Brick Structure		Wooden Structure		Bamboo Structure		New Buildings		Buildings Without Good		
	Buildings	Rooms	Buildings	Rooms	Buildings	Rooms	Buildings	Rooms	Repaired	Constructed	Floor	Roof	Wall
Pailin	12	45	7	38	5	7	0	0	0	2	3	1	3
Ou Ta Vau	12	37	6	28	6	9	0	0	1	0	0	0	4
Tuol Lvea	15	74	13	69	2	5	0	0	0	0	1	0	0
Bar Yakha	7	26	5	22	2	4	0	0	0	0	1	1	1

12.7 Conditions of Classrooms and Existence of Separate School Office and Library, by Commune

Commune	Number of Class rooms	Number of Classrooms			Classrooms Without Good			Number of Furniture needed				Schools with Separate	
		in Pagoda	New Repaired	New Constr.	Floor	Roof	Wall	Desks	Chairs	Black-board	Teacher Table	Office	Library
Pailin	38	0	0	7	5	2	5	53	72	5	22	1	1
Ou Ta Vau	30	0	3	0	0	0	4	20	20	2	11	1	1
Tuol Lvea	63	0	0	0	3	0	0	82	83	1	16	4	5
Bar Yakha	14	0	0	0	3	3	3	11	1	1	2	3	1

12.8 Community Participation and Financing across all schools in the District for 2007/2008 by Commune

Commune	Parent Association				Commu. Teachers	Teaching Monks	PAP Fund (Riel)		Number of Schools Obtaining Funds from				
	Exists	Held Meet	Total	Female			per Student	per School	Sch. Income	Community	Gvt. For building	Abroad	IOs/NGOs
Pailin	6	6	5	1	0	2	7,939	4,338,669	0	0	1	0	0
Ou Ta Vau	6	6	5	2	0	0	8,715	1,680,857	0	0	0	0	0
Tuol Lvea	5	5	5	0	0	0	13,721	9,048,883	2	2	0	0	2
Bar Yakha	4	4	6	1	0	0	6,091	1,914,504	0	1	0	0	0

12.9 Percentage Student Flow Rates and Graduation by level 2006/2007, by Commune

Commune	Primary Level (Grades 1-6)			Lower Secondary Level (Grades 7-9)			Upper Secondary Level (Grades 10-12)			Successful Candidates		
	Promotion	Repetition	Dropout	Promotion	Repetition	Dropout	Promotion	Repetition	Dropout	Grade 6	Grade 9	Grade 12
Pailin	78.4	8.0	13.6	86.4	3.6	10.0	0.0	0.0	0.0	291	0	0
Ou Ta Vau	79.3	9.0	11.7	0.0	0.0	0.0	0.0	0.0	0.0	123	0	0
Tuol Lvea	80.7	8.6	10.6	86.7	1.7	11.6	80.1	3.2	16.6	227	274	65
Bar Yakha	77.8	10.5	11.7	81.6	1.4	16.9	0.0	0.0	0.0	95	35	0

13 Staff and Resources at the District

This chapter presents data from the District Information System, collected around the middle of 2009 unless otherwise specified.

13.1 District Councilors elected in 2009

Name	Sex	Year of Birth	Function	Phone
ហែម ឫទ្ធី	M	1970	Chairperson of The Council	012-559 158
តាន់ សារ៉ាត	M	1954	Councillor	016-793 154
ប៊ុល ណាង	M	1954	Councillor	011-731 055
ព្រាក់ យ៉ាន	M	1950	Councillor	016-700 436
ឡាច សុន	M	1947	Councillor	016-790 028
សុខ ប៊ុនថាំង	M	1952	Councillor	016-786 709
យ៉ែម នួន	F	1956	Councillor	016-709 581
ឡាច ណាត	M	1959	Councillor	012-613 780
អ៊ុង ម៉ុត	M	1951	Councillor	012-625 917
សំ ព្យុង	M	1947	Councillor	092-645 129
ហេង យ៉ឹម	M	1951	Councillor	092-427 607
ឃិន ប៊ុន	M	1957	Councillor	012-280 568
នួន ប៊ុនឈឿន	M	1973	Councillor	092-201 118

13.2 Committees of the Council

Please note at the time of producing the district data books the composition of the committees was not known for all district councils and therefore data were not available for 13.2.1, 13.2.2, 13.2.3.

13.2.1 Technical Facilitation Committee

13.2.2 Women's and Children's Affairs Committee

13.2.3 Procurement Committee

13.3 Board of Governors

Name	Sex	DoB	Function	Salary Level	Body	Phone
ស្រី ស៊ីហ្គាត	M	1954	Municipality governor	គ.ព.ព	High Ranking Civil Servant	016-882 908
ស្រី ប៊ុនសង	M	1956	Municipality deputy governor		Medium Civil Servant	016-389 403
សាត ណាក់	F	1958	Municipality deputy governor	គ.ព.១៤	Secretary	016-771 635
ឡូ សុយ	M	1968	Municipality deputy governor		Medium Civil Servant	097-749 4888

13.4 Offices under Sala Krong, Sala Srok and Sala Khan

Office Name	Chief		Deputy Chief		No. of Staff				Office Area (m2)	No of vehicle (public or program)	
					State		Contract				
	M	F	M	F	M	F	M	F		vehicle	moto
District/ Khan Cabinet	0	0	1	0	0	0	0	0	16	0	0
Adminnistration Office	1	0	0	1	4	2	0	0	16	0	0
Economy Office	1	0	1	0	0	1	0	0	16	0	0
Social Affair Office	1	0	1	0	1	0	0	0	16	0	0

13.5 Municipality/District/Khan line offices

Office Name	Chief		Deputy Chief		No. of Staff				Office Area (m2)	No of vehicle (public or program)	
					State		Contract				
	M	F	M	F	M	F	M	F		vehicle	moto
District/ Khan Police Headquarter	1	0	3	0	52	0	0	0	168	0	7
District/ Khan Military Police Headquarter	1	0	1	0	16	0	0	0	172	0	3
District/ Khan Military Subregion	1	0	3	0	99	0	0	0	236	1	2
Rural Development Office	0	1	0	1	0	0	0	0	Borrow	0	0
Women Affairs Office	0	1	0	0	0	3	0	0	Borrow	0	0
Education Office	1	0	2	0	5	1	0	0	30	0	2
Agriculture Office	1	0	0	0	3	0	0	0	Borrow	0	1
Social Affairs Office	1	0	1	0	0	0	0	0	Borrow	0	0
Culture Office	1	0	1	0	0	0	0	0	Borrow	0	0
Post Office	1	0	0	0	3	0	0	0	Borrow	0	0
Lan Management Office	1	0	2	0	3	0	0	0	Borrow	0	0
Tax Unit	1	0	1	0	6	3	0	0	Borrow	0	0

13.6 Properties and Equipment of District Administration

13.6.1 Buildings

Description	Unit	Number	Remark
Office building type			
- Concrete	building	1	
- Wood	building	1	
- Mixed	building	2	
Total floor space	m2		
- Concrete	m2	8.75	
- Wood	m2	64	
- Mixed	m2	258	
Building condition			
- Concrete	%	50	
- Wood	%	90	
- Mixed	%	50	
Office reserved land area	m2	0	
Total office land area	m2	7,000	

13.6.2 Means of Transport available at the District Administration

Description	Unit	Number	Remark
Vehicle (type, size and condition)	Vehicle	0	
Motorcycle (type, size and condition)	Motor	0	

13.6.3 Equipment in District Offices

Description	Unit	Number	Remark
Generator	per set	0	
Photocopy machine at the office	per set	1	
Private photocopy machine at the district town	place	4	
Telephone network (mobile line service)	network	4	
Telephone network (land line service)	network	3	
Fax (include Fax number)	per set	0	
Computer	per set	1	
Printer	per set	1	
Scanner	Per set	0	
Number of computers those can access Internet and email services in the municipality/ district/khan office (including the technical line offices (please provide the email address)	set	0	
Typewriters (including the technical line offices)	per set	5	
Staff of Municipality/district/khan office can use computer	person	4	

13.6.4 Equipment and facilities at the District Town

Description	Unit	Number	Remark
Availability of electricity at noon	Nr Hours	12	
Private internet and email services in the municipality/ district/khan town.	place	2	

13.7 Registered Revenue of the District Administration in 2008⁴

Sources of Revenue	Revenue Collecting Agency	Estimated annual revenue (In Riels)
Shopping Store	Provincial Taxation Branch	23,500,000
Patent Fee	Provincial Taxation Branch	4,000,000
Slaughter Hosue	Department of Economy and Finance	7,000,000
Unsed Land Tax	Provincial Department of Land Management	2,500,000
Tourism	Salakhet	5,000,000
Resort	Salakhet	10,000,000
Tax imposed on merchants	Salakhet	1,000,000
Lodging Tax (Guest House and Hotel)	Provincial Taxation Branch	3,000,000
Transportation Tax	Provincial Taxation Branch	7,000,000
Bus Station	Department of Economy and Finance	6,000,000
Craft	Provincial Taxation Branch	500,000

13.8 Services in the District

13.8.1 Public Sector Services

Type of Infrastructure/services	Unit	Number	
		Public	Private
Schools			
Pre-school	room	11	1
Primary School	room	160	0
Secondary school	room	21	0
High School	room	35	0
University	room		
Health			
Health post	place	1	0
Health center	place	2	0
Referral Hospital	bed	60	0

⁴ Please note that the data in this table are at best estimates. If the table appears blank it does not mean there is no revenue, just that the data have not been recorded/entered.

13.9 Civil Society Organizations active in the District

13.9.1 NGOs, Associations, Programs and Projects

Name	Abbr.	Sector Activities	No. of Target Communes	No. of Target Villages	Office in District
NA	PSI	ផ្តល់សេវាពន្យាកំណើត លក់ ផលិតផល ជំងឺគ្រុនចាញ់ ដែលមានតំលៃថោក	0	0	Yes
NA	BFD	សេវាគេហទំព័រ និង អ៊ីមែល ការ អភិវឌ្ឍន៍វិស័យកសិកម្ម និងពាណិជ្ជកម្ម សហគមន៍ អប់រំផ្នែក សិទ្ធិមនុស្ស និង ចិញ្ចឹមកុមារកំព្រា ក្រីក្រ	8	79	Yes
NA	AHEAD	គំរោង និង កម្មវិធីអេដស៍ របប និងការថែទាំអ្នកជំងឺតាមផ្ទះ	3	1	No
NA	TRAUMA CARE	ត្រៀមលក្ខណៈមុនពេលកើត និង ក្រោយពេលសំរាល សហការ ជាមួយមណ្ឌលសុខភាព	0	0	No
NA	CARE	ការអភិវឌ្ឍន៍សហគមន៍ និង ការរំដោះដីមីន	4	28	Yes
NA	ACLEDA	ឥណទានសាច់ប្រាក់	8	52	Yes
NA	CANADIA	ឥណទានសាច់ប្រាក់	6	18	Yes
NA	BWAP	លើកកម្ពស់ការយល់ដឹងអំពី ជំងឺអេដស៍ និង ការថែរក្សាអ្នក ផ្ទុកមេរោគអេដស៍ និង អ្នកកើត ជំងឺអេដស៍នៅតាមផ្ទះ	4	36	Yes
NA	CMACDU3	សំអាតមីន និង យុទ្ធភ័ណ្ឌមិនទាបផ្ទះ	8	79	Yes
NA	CBIRD	ឥណទានសាច់ប្រាក់	8	52	Yes
NA	OGOV	ឥណទានសាច់ប្រាក់	8	79	Yes
NA	ASPEKA	គាំទ្រកាចិញ្ចឹម និង ផ្តល់ការសិក្សាដល់ក្មេងកំព្រា	8	79	Yes

Name	Abbr.	Sector Activities	No. of Target Communes	No. of Target Villages	Office in District
NA	FHI	អ្នកផ្គត់ផ្គង់មេរោគអេដស៍ និងអ្នកជំងឺអេដស៍ ទាក់ទងដល់ការប្រើប្រាស់ថ្នាំពន្យាជីវិត ការផ្តល់ប្រឹក្សាក្នុងការធ្វើតេស្តឈាមកាត់បន្ថយអត្រាឈឺ និងស្លាប់ដោយសារជំងឺគ្រុនចាញ់	8	23	Yes
NA	URC	ការគ្រប់គ្រងជំងឺគ្រុនចាញ់	8	105	Yes
NA	VIGILENCE	ផ្សព្វផ្សាយសិទ្ធិមនុស្ស	4	36	Yes
NA	VKP	ឥទ្ធានគោដល់ជនដែលងាយរងគ្រោះផ្តល់សំភារៈអប់រំដល់សិស្សក្រីក្រ ផ្សព្វផ្សាយអំពីការជួញដូរស្ត្រី និងកុមារ និងការប្រើប្រាស់គ្រឿងញៀន និងជំងឺអេដស៍	9	329	Yes
NA	MC	ផ្តល់បច្ចេកទេសលើការគ្រប់គ្រងទិន្នន័យ ព្រមទាំងរបាយការណ៍ផ្សេងៗ អំពីស្ថានភាពជំងឺគ្រុនចាញ់	0	0	Yes
NA	ADHOC	ផ្សព្វផ្សាយ ច្បាប់ និង សិទ្ធិមនុស្ស	8	79	Yes
NA	RHAC	គាំទ្រមាតា និង ទារកសុខភាពបន្តពូជយុវវ័យ សហការជាមួយមណ្ឌលសុខភាព ទាក់ទង និងប្រព័ន្ធព័ត៌មានសុខាភិបាល	8	85	Yes
NA	CIAI	គាំទ្រការសិក្សាអប់រំ ដល់កុមារតាមរយៈផ្តល់សំភារៈសិក្សា និងជួយឱ្យពួកគេម្តាយ ធ្វើសកម្មភាពកម្មវិធី	3	73	Yes
NA	WACD	ពង្រឹងអភិបាលកិច្ចមូលដ្ឋានសំរាប់ការអភិវឌ្ឍន៍ដល់អ្នកក្រីក្រ	4	21	Yes
NA	CWPD	លើកកម្ពស់ការយល់ដឹង	1	2	Yes

Name	Abbr.	Sector Activities	No. of Target Communes	No. of Target Villages	Office in District
		អំពិជំងឺអេដស៍ ដល់ស្រ្តី			

13.9.2 Political Parties active in the Municipality, District and Khan

Name	Abbr.	Office in District
Cambodian People Party	CPP	Yes
FUNCINPEC Party	FUNCINPEC	Yes
Human Rights Party	HRP	Yes
NRP	NRP	Yes
SAM RAINSY Party	Sam Rainsy Party	Yes

13.10 Private Sector Organizations

13.10.1 Registered Companies in 2008, by District

On private sector at commune and/or district level	PLN	Pailin	Salakrau
Businesses and Companies			
Number of registered agricultural enterprises (except family farms)	22	19	3
Number of registered shops, restaurants, transporters and other services	36	32	4
Number of manufacturing companies	3	3	n/a
Number of registered forestry enterprises	8	7	1
Number of registered mining companies	1	0	1
Number of financial institutions	6	3	3
Number of other commercial institutions	3	0	3
Estimated number of informal enterprises (not registered)	n/a	n/a	n/a
Employment			
Number of people employed in 2008 by companies or any other enterprises	422	54	368
Investment			
Amount invested in 2008 by private sector (\$)	n/a	n/a	n/a
Markets			
Number of markets, operating at least weekly	3	1	2

Note: These data are not comprehensive as different companies and business are registered with different departments and not all departments were able or willing to provide detailed information. The number of informal enterprises reflects a rough estimate, made at provincial level and could not be verified.

Source: Unofficially collected at Provincial Level

13.10.2 Farmers in 2008, by District

Credit	PLN	Pailin	Salakrau
Volume of credit provided to farmers in 2008 (\$)	3,507,307	\$ 2,542,255	965,052
Number of farmers receiving credit in 2008	1,135	642	493
Volume of credit provided to companies in 2008 (\$)	n/a	n/a	n/a

Note: Please note that these data are not necessarily complete or correct. The data are derived from government agencies at provincial and district level which used different recording systems, did not always have complete data or were, sometimes, less than willing to share their data.

Source: Unofficially collected at Provincial Level

SECTION E: POVERTY DATA

14 Data on Poverty

14.1 Predicted Poverty Rates for 2009, by commune

The **Predicted Family Poverty Rate** is based on a statistical model (robust multilevel mixed effect regression) at village level developed by the NCDD M&E Unit and uses CDB data for making an estimate of the predicted poverty rate (this is: the portion of total families in the district or commune who are expected to be poor) for the following year using current year data.

The basis for this predicted poverty rate also uses IDPoor (a project of the Ministry of Planning with technical assistance provided by GTZ) data

Commune	2004	2009
Pailin	34.80%	21.60%
Ou Ta Vau	42%	31.80%
Tuol Lvea	33.70%	18.50%
Bar Yakha	38.40%	25.80%

14.2 Poverty data from survey

14.2.1 Identification of Poor Households Program (IDPoor)

The Ministry of Planning IDPoor Program has developed standardized Procedures for Identification of Poor Households in rural areas. These Procedures are implemented using a participatory and consultative process by sub-national government structures and community representatives.

The IDPoor Program is managed by the Ministry of Planning (MOP), in cooperation with the Ministry of Interior's Department of Local Administration (DOLA). The program is supported by the Federal Republic of Germany, with technical assistance provided by German Technical Cooperation (GTZ). In 2009, AusAID also provided funding support to the Program.

Objective

The IDPoor Program aims to implement the Procedures for Identification of Poor Households in rural areas as widely as possible, in order to provide data on the level of poverty of areas and households that can be used by a large range of institutions and organizations for targeting services and development assistance to poor areas and poor households.

Coverage: During 2007, 2008 and 2009 the IDPoor Procedures have been implemented in 18 provinces (with partial or complete coverage), covering a total of around 7000 rural villages. The MOP and a number of NGO partners who are Health Equity Fund Operators have collaborated in collecting this data from different areas.

Categorization: Identified poor households are classified under two poverty categories: Poor Level 1 (very poor), and Poor Level 2 (poor). Households are classified based on data collected using a standard questionnaire, together with consideration by villagers of these households' special circumstances.

Further information: Please go to the IDPoor Program webpage at www.mop.gov.kh/Projects/IDPoor/tabid/154/Default.aspx

This District has not yet been covered by IDPoor